







## SHOREDITCH – LONDON'S FIRST THEATRELAND

THE STAGE – THE CAPITAL'S MOST EXCITING NEW DEVELOPMENT  
THEMED BY THE DISCOVERY OF THE REMAINS OF SHAKESPEARE'S CURTAIN THEATRE  
DATING BACK TO 1577



The remains of the Curtain Theatre were discovered in 2011, lying three metres below the surface of the development.

IMAGES OF SITE EXCAVATION COURTESY OF MUSEUM OF LONDON ARCHAEOLOGY



# THE STAGE

DEVELOPMENT OVERVIEW

## CONTENTS

Development Overview	5 - 13
Apartments	14 - 33
Amenities & Leisure	34 - 55
Partners & Professionals	56 - 63
Contacts	64

Photo on preceding page Curtain Theatre excavation courtesy of MOLA



# THE STAGE

TOWER BRIDGE

TOWER OF LONDON

MORE LONDON & GLA HQ

BRICK LANE

LONDON BRIDGE QUARTER

THE SHARD

THE CITY FINANCIAL QUARTER

OLD SPITALFIELDS MARKET

TATE MODERN & SHAKESPEARE'S GLOBE THEATRE

LIVERPOOL STREET

SHOREDITCH HIGH STREET

THE LONDON EYE, BIG BEN & HOUSES OF PARLIAMENT

ST PAUL'S CATHEDRAL

AMAZON EUROPEAN HQ

BUCKINGHAM PALACE

TRAFALGAR SQUARE

LEICESTER SQUARE & COVENT GARDEN

THE WEST END

TECH CITY





540,000

SQFT OVERALL SCHEME

388,426

SQFT OF RESIDENTIAL SPACE

238,538

SQFT OF OFFICE SPACE

16,500

SQFT OF RECREATIONAL SPACE



47,900

SQFT OF PUBLIC REALM

412

PRIVATE APARTMENTS

33,668

SQFT OF RETAIL SPACE

37

APARTMENT LEVELS

5

PRINCIPAL APARTMENT STYLES

3

PENTHOUSES

15,715

SQFT OF HERITAGE SPACE



**SUITES, APARTMENTS & PENTHOUSES  
RISING 37 STOREYS**

**EXTENSIVE RECREATIONAL FACILITIES  
INCLUDING 2 CINEMAS, GAMES LOUNGE,  
BOWLING LANES, GYM, EXECUTIVE  
LOUNGE AND BUSINESS SUITES**

**32ND STOREY SKY LOUNGE  
& AL FRESCO TERRACE**

# DELIVERING A NEW

**WORLD CLASS INTERIOR DESIGN BY  
NICOLA FONTANELLA OF ARGENT DESIGN**

**BESPOKE RESIDENCE MANAGEMENT  
BY RHODIUM**

**EQUINOX SHOREDITCH – HIGH  
PERFORMANCE LIFESTYLE & FITNESS  
CLUB AT THE STAGE**

**INTERNATIONAL BRAND – WEWORK  
CO-WORKING FACILITIES**

**RETAIL, COMMERCIAL, HERITAGE &  
PERFORMANCE SPACE**

# LANDMARK FOR LONDON





THE STAGE  
APARTMENTS



# ONE BEDROOM SUITES

Open plan living space

# MULTI-FUNCTIONAL SCREENS

Providing adaptable and enhanced living areas

Separate your space to suit your style. Crittall glass screens partition the living and sleeping areas to accentuate open-plan space or enable privacy, while the kitchen provides the flexibility of being concealed behind sliding doors when not in use.





# 1, 2 & 3 BEDROOM APARTMENTS

Space to relax, space to entertain



## SLIDE INTO SPACE

Sleek bronze and timber sliding pocket doors reveal beautifully crafted full height storage and wardrobe space in many studio and 1 bedroom apartments, while larger apartment styles incorporate fully fitted wardrobes with bronzed mirrored doors.



## BESPOKE DETAILING

A palette of urban unpolished charm

Each apartment will be furnished with a bespoke, bronze and glass shelved entertainment unit providing subtle storage space while creating a central feature to the living area. The unit will also integrate a wide screen LED smart TV and advanced play bar system.

Apartment lighting includes black track ceiling spot lights and LED downlighting.





# SHOWER & BATHROOMS

Wash away the day

Shower and bathrooms feature black crittal style screens and enclosures with finishes in a palette of terrazzo, white stone, charcoal herringbone and antique bronze detailing with tile vision LCD TV to majority of suites and apartments.





## BRUSHED ANTIQUÉ BRONZE

Apartment floor to ceiling fitted wardrobes are specified with antique bronze detailing together with the door furniture, matt black skirting and black steel socket plates complement the bronze throughout.





### General Specification

- Matt grey warm tone painted walls and brilliant white smooth ceilings.
- Matt black skirting.
- Natural oak one strip hardwood engineered flooring to kitchen, hallway, living/dining area and all bedrooms.
- Extended height beige/grey timber lacquer finish internal doors with bronze strip to lever side (also entrance door).
- Matt black finish architraves.
- Brushed antique bronze door furniture including lever door handles.
- Black coated stainless steel switch and socket plates.
- USB socket outlet to all rooms.
- Programmable mood lighting to principal living area and all bedrooms.
- Black track lighting to living/dining area and kitchen.
- Recessed LED downlighting to bathrooms.
- Double glazing throughout.
- Sonos Play 1 wireless multi-room speaker (or equivalent future technology).
- Comfort cooling/space heating to living area and each bedroom of apartments (suites living area only).
- Superfast fibre broadband enabled and pre-installed to each suite and apartment.

### Living/Dining Room

- Feature white washed brick slip wall.
- Bespoke fitted entertainment unit incorporating steel framing in Nordic bronze with Pasadina Pine doors and Nordic bronze mesh shelving.
- 40-50" LED smart TV within entertainment unit.
- Sonos Playbar (or equivalent future technology) also within entertainment unit providing hi-fi quality sound and wireless music streaming (subject to subscription).

- TV socket set to living room (Sky+) subject to subscription. All TV socket sets to include digital radio and terrestrial sockets.
- Telephone socket to living/dining area.
- Suites and selected one bedroom apartments to incorporate crittall style sliding doors dividing living and bedroom areas. Track system in matt black, 3-4 sliding panels with fluted glass to both faces.

### Kitchen Area

- Bespoke vertical grain oak faced base and wall units incorporating bronzed strip handleless doors, pure white composite/quartz stone worktops and splashbacks.
- Low energy wall unit under lighting.
- Selected suites to feature full height bronze framed sliding grey smoked mirrored doors concealing kitchen and appliances.
- Fully integrated stainless steel electric appliances to include:-
  - Miele single oven
  - Miele 4 ring induction hob (2 ring in suites)
  - Concealed telescopic cooker hood
  - Washer/dryer (freestanding if within utility cupboard)
  - Miele dishwasher
  - Siemens fridge/freezer
- Integrated or free standing Miele microwave.
- Composite bowl under-mounted sink with graphite '3-in-1' hot, cold and boiling water tap.
- Centralised appliance isolator switch panel.

### Bedroom

- Bespoke floor to ceiling fitted wardrobe to master bedroom with antique bronze frame and detailing, Pasadina Pine doors with bronze inlay and grey smoked mirror to one door. (Second and third bedrooms Pasadina Pine doors only.)
- TV socket set to all bedrooms (Sky) subject to subscription. All TV socket sets to include digital radio and terrestrial sockets.
- Telephone extension socket to all bedrooms.

### Bathroom/Shower Room

- Night Natural small format porcelain/ceramic herringbone tiling to floors.
- Valentina Urban large format porcelain/ceramic wall tiling.
- Feature Terrazzo recessed niche to principal bathroom with glass shelving.
- Electric mat underfloor warming.
- Black steel shaver socket concealed in wall unit.
- White bathroom suite featuring shower or steel bath, Villeroy & Boch wall hung WC and under-mount basin.
- Black basin mixer tap, bottle trap, cistern push plate, thermostatic bath filler/shower mixer diverter.
- Vanity base and wall unit in lacquered Pasadina Pine with antique bronze framing demisting integrated mirror and concealed lighting.
- Vanity top in composite pure white stone.
- Matt black glass bath panel.
- Black crittall style bath screen/shower enclosure.
- Concealed plumbing fixed matt black shower head over bath and in shower enclosure with low level matt black hose and handset.
- Black square profile heated towel rail with summertime control.
- 22 inch tile vision LCD TV to bathrooms over bath.

### Security

- Smoke detector to hallway.
- Audio/video entryphone system.
- Hotel style all on/off switch allowing quick shutdown of the apartment lighting and entertainment system upon leaving.

Note:  
Suite kitchen may not incorporate a full complement of appliances or may not be fully integrated subject to layout.



# THE STAGE

AMENITIES & LEISURE



# BOWLING ALLEY

Strike out in your spare time and invite your friends to put their bowling skills to the test at the residents' own bowling alley.



## GAMES LOUNGE

Residents' private functions are welcomed at the games lounge featuring a host of recreational facilities in this dynamic double-height space.

Computer generated images of bowling lanes and Games Lounge



# FITNESS SUITE

Workout when you want in the residents' private gym featuring leading Technogym equipment.



# BUSINESS LOUNGE

Pop downstairs to the office within The Stage's first class private business suite, complete with executive lounge and boardrooms offering a wide range of essential services.

Computer generated images of residents' executive lounge and screening room



Residents will have the benefit of two, tiered level cinema style screening rooms which can also be reserved for personal use.

# CINEMAS





# SKY LOUNGE

Residents of The Stage have exclusive access to this one-of-a-kind 32nd storey sanctuary and entertaining space at the development's very own indoor/outdoor sky lounge.

Computer generated image of residents' private 32nd level sky lounge.



## SKY TERRACE

Soak up breathtaking skyline views from dawn to dusk while relaxing in your very own rooftop oasis.

# R H O D I U M

RESIDENCE MANAGEMENT

Rhodium have created a niche to service the ultra-luxury requirements of London's most discerning residents - and will provide an unparalleled suite of bespoke, prestigious services at The Stage.

The Capital's most highly acclaimed home management and deluxe lifestyle provider will ensure residents a dedicated service 24 hours a day.



Double height foyer and concierge reception.

# R H O D I U M

RESIDENCE MANAGEMENT

“ Rhodium is a luxury residence management company, providing bespoke property and lifestyle management services to London’s super-prime homes and prestigious residential developments.

## Residents’ bespoke services will include: \*

- IN-RESIDENCE DINING AND PRIVATE CHEF SERVICES.
- HOUSEKEEPING, LAUNDRY AND TAILORING.
- PERSONAL SHOPPING, DELIVERY & STOCKING.
- HOME SALON AND STYLIST SERVICES.
- BUTLER AND PERSONAL ASSISTANTS.
- PERSONAL TRAINING AND NUTRITIONIST SERVICES.
- TRANSLATION SERVICES.
- PARTY & EVENT PLANNING
- LIMOUSINE, CAR & CHAUFFEUR SERVICES.
- PRIVATE JET, HELICOPTER & YACHT CHARTER.
- DINING RESERVATIONS AND PREFERRED RESTAURANT SEATING.
- VIP ARTS & ENTERTAINMENT MEMBERSHIPS.
- GUEST LISTS FOR LONDON BARS AND NIGHTCLUBS.
- VIP AND RED CARPET EVENT TICKETS.
- PERSONAL TUTORING AND PRIVATE EDUCATION CONSULTANCY.

\* Residents’ facilities at additional cost.



## Unleash your highest potential

Each apartment owner will have a complimentary 3 year transferable membership at Equinox Shoreditch.



### CLUB HIGHLIGHTS WILL INCLUDE:

- ACTIVE REGENERATION
- ATHLETIC TRAINING
- BARRE
- BOXING & MARTIAL ARTS
- CYCLING
- DANCE
- PILATES
- RUNNING
- YOGA

### EQUINOX SIGNATURE CLASSES:

- ANTHEM™
- FIRESTARTER™
- MASTER OF ONE
- PRECISION RUN®
- TRUE ATHLETE
- THE MUSE™

Equinox Shoreditch, will be located at The Stage, occupying three floors of the adjacent Hewett office building. Featuring elevated experiences, a masterful club interior and unparalleled amenities, the bar for what's possible will never be the same.



# EQUINOX

## AT THE STAGE

Equinox Shoreditch will be an all-new high-performance home within London's creative district.

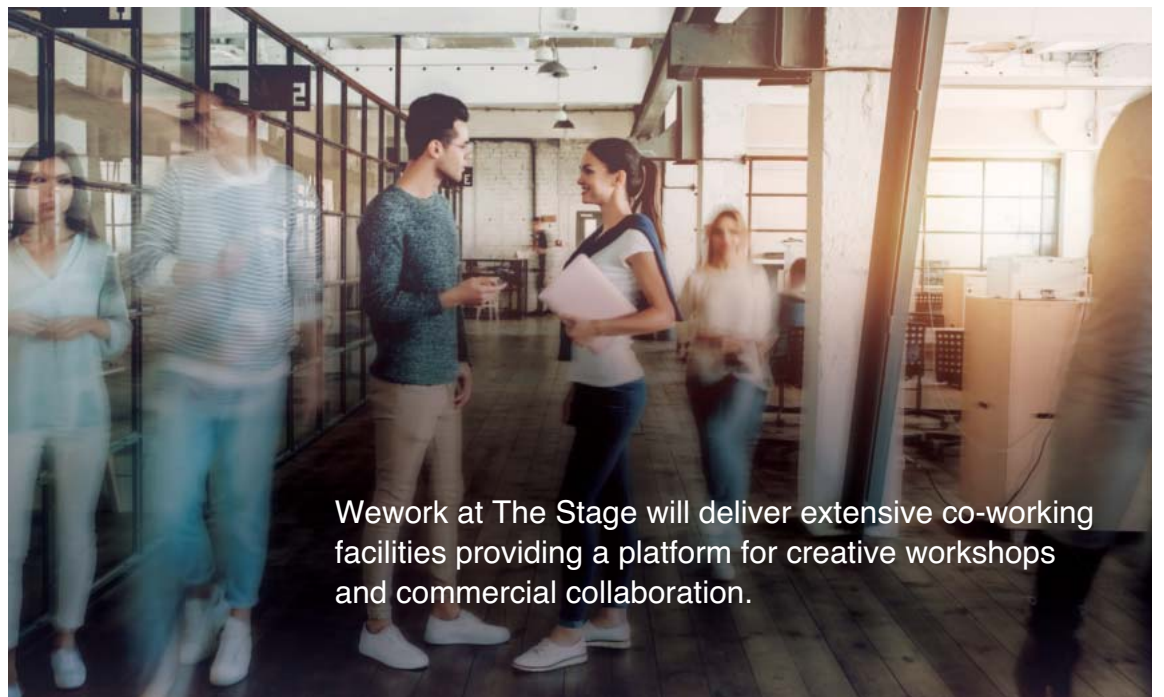
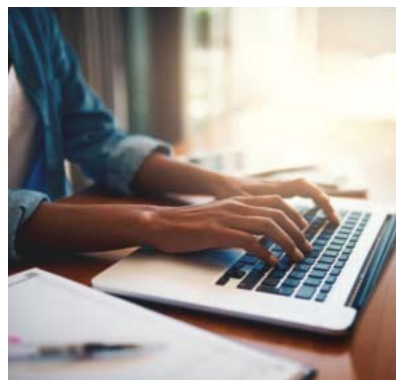
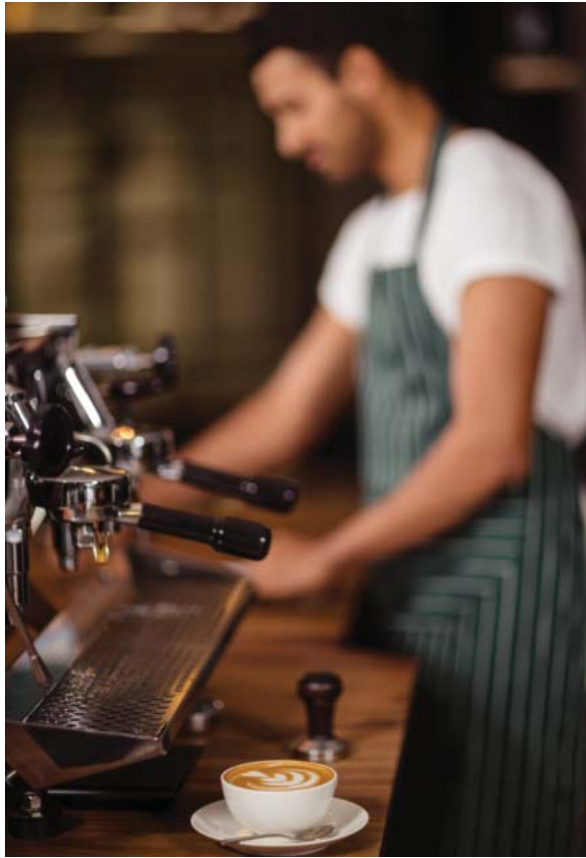
The club will offer performance-driven lifestyle coaching and personal training, dynamic group fitness, private pilates and yoga. The Pursuit by Equinox, an award winning, immersive and highly competitive workout, will be hosted in the state-of-the-art cycling studio. Additional amenities include, The Spa at Equinox which will feature a menu of treatments to indulge and regenerate the body, an Equinox Shop with curated athleisure-wear collections, plus a members' cafe and lounge to socialise, work or refuel after a workout.

Founded in 2010, Wework has rapidly grown to become an international brand and market leader in delivering shared office space.

# wework

## AT THE STAGE

Wework's challenge to convention and passion to create a world where people work to make a life, not just a living, will provide The Stage with yet another unique offering - a brand new community where you join as an individual 'me' but quickly become part of a greater 'we'.



Wework at The Stage will deliver extensive co-working facilities providing a platform for creative workshops and commercial collaboration.

An aerial photograph of a city skyline at sunset. The sky is a warm, golden-brown color. In the foreground, a modern building with a glass facade and a rooftop garden is prominent. To the left, a tall building with a textured facade and balconies is visible. The background shows a dense urban landscape with various buildings and a prominent domed structure.

# THE STAGE

PARTNERS & PROFESSIONALS

# PERKINS+WILL

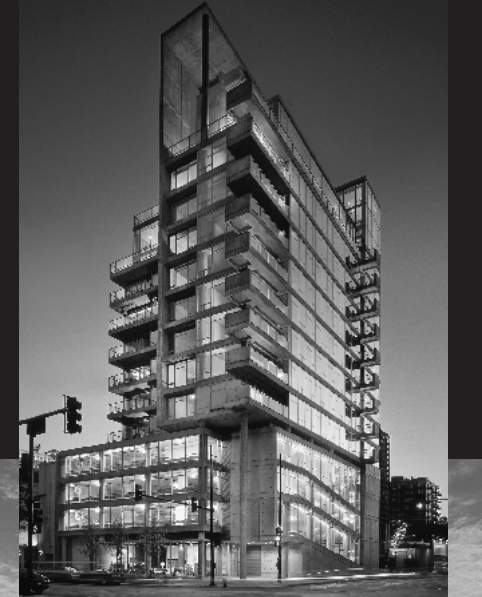
INTERNATIONALLY ACCLAIMED ARCHITECTS

“ I particularly welcome the commitment to making part of London's internationally important heritage accessible to the public and the imaginative way this has been delivered by the design team.

**Boris Johnson,**  
Mayor of London 2008-2016

Established in 1935, Perkins+Will is a global interdisciplinary architecture and design firm founded on the belief that design has the power to transform lives and enhance society. With a staff of 1,700 in 23 locations worldwide, the firm serves clients across a broad range of project types and grounds its work in deep research. Perkins+Will ranks among the world's top design firms and is the recipient of hundreds of awards. Social responsibility is fundamental to the firm's outlook, work, and culture, and every year Perkins+Will donates one percent of its design services to non-profit organizations. With pioneering tools to advance sustainable design practices, the largest green building portfolio in North America, nearly 1,000 LEED® Accredited Professionals, and a commitment to the 2030 Challenge, Perkins+Will is recognized as one of the industry's pre-eminent sustainable design firms.

The Stage masterplan was designed by Perkins + Will, led by Design Principal John Drew and Project Director Therese Bak, features the 38 storey landmark residential tower at the heart of a vibrant scheme with three bespoke commercial & retail buildings, an assembly pavilion, Victorian railway arches, retail, rooftop coffee shop and gardens connected by 1.1 acre public piazzas with central exhibition space that showcases archaeology of the Curtain Theatre, where William Shakespeare's Romeo and Juliet and Henry V premiered.





“Outstanding interior design both answers and anticipates clients’ needs” says Nicola Fontanella, interior design visionary and founder of Argent Design. With over 20 years’ experience, Argent has created some of the world’s most desirable, most luxurious and most highly valued homes. Whilst Argent’s client base extends beyond the UK to property hotspots like Miami, Monaco, New York, St Petersburg, St Tropez, Shanghai and Verbier, Argent’s vision never falters - global interior design trends are translated into environments that both anticipate and lead worldwide interior fashions.

# ARGENT

WORLD CLASS INTERIOR DESIGN AT THE STAGE

“ Britain’s foremost glam-rock interior designer gets knee-deep in one of London’s most dynamic hotspots

Argent’s design vision for The Stage was self-evident: Stripped-back surfaces of brick and concrete are juxtaposed with unique, tongue-in-cheek artwork commissioned by one of London’s foremost street artists; furniture is clean-cut, timeless in its simplicity, yet laced with immaculate detailing, reminiscent of traditional craftsmanship and humble expertise; statement pieces live up to their name, forcing you to stop and breathe them in. The Stage is a harness for capturing the currents of energy that flow through Shoreditch past, present and future.





## The Stage joint venture development team



Galliard Homes have almost 25 years of expertise in acquiring and developing high profile regeneration schemes across the Capital. The Company has been at the forefront of the revitalisation of whole areas of London and continues to seek out new opportunity for its loyal customer base.

Galliard is now the largest privately owned residential developer in London with almost 7,000 homes under construction, and as the focus of the Capital shifts to the east, The Stage is set to become their most innovative and prolific joint venture to date.



Cain International is a global real estate investor with particular expertise in residential development. One of the property industry's most significant financial backers, it is currently behind the development of over 4,000 new homes in the UK, Europe and the US. Cain International and Galliard Homes Ltd have formed a joint venture company called Galliard Developments Ltd to invest in new residential led projects over the next three years.



McCourt Global is a leader in building value through entrepreneurial, strategic, and philanthropic investments. The firm's principal businesses include: MG Properties, its real estate investment and development arm; MG Capital; and MG Sports & Media. With roots dating back to 1893, McCourt Global was founded by real estate developer and philanthropist Frank H. McCourt, Jr. The firm is headquartered in New York City, with offices in Los Angeles.



China Vanke is one of the largest real estate development and services companies globally, with a market capitalisation of USD \$62.83bn (as at 31 January 2018), and total assets under management of USD \$126bn across a wide variety of real estate sectors across the globe.

China Vanke conducts residential development and commercial real estate investment activities across 65 cities in mainland China and 7 cities across the rest of the world, including Hong Kong, Singapore, New York, San Francisco, and London. As at 2018, China Vanke ranks 322nd on the Global Fortune 500. China Vanke was the second company to list on the Shenzhen Stock Exchange (SZSE:000002) in 1991 and, listed on the Hong Kong Stock Exchange (HKG:2202) in 2014.



The Estate Office Shoreditch has been acquiring land and buildings in and around Shoreditch since 1966. The company was instrumental in the early planning and development process for The Stage and has retained an interest and ownership in its historical and archaeological elements.

## SALES & MARKETING

Galliard Homes The Stage  
Sales & Marketing Suite  
The Viaduct  
Fairchild Place  
Shoreditch  
London EC2A 3EN

020 3770 2154

thestage@galliardhomes.com  
thestageshoreditch.com

## PR AND PRESS

Galliard Homes 020 8418 1000

Gary Conway  
gc@galliardhomes.com

Sherry Yang  
Sherry.Yang@galliardhomes.com

Lawrie Cornish 020 7935 4084

Alex Lawrie  
alex@lawriecornish.com

## BUILDING MANAGEMENT & LUXURY CONCIERGE

Rhodium 020 7887 7886

Berkeley Square House  
Berkeley Square  
London W1J 6BD

www.rh-45.com

## APPOINTED LETTING AGENTS



020 8896 9990  
www.liferesidential.co.uk

## DISCLAIMER

These particulars are compiled with care to give a fair description but we cannot guarantee their accuracy and they do not constitute an offer or contract. Galliard Homes reserve the right to alter any specifications and floor plan layouts without prior notice. All journey times stated are approximate, source tfl.gov.uk. Walking times taken from google.com. Exterior images of The Stage are computer generated and deemed to be accurate at time of going to print. Potential purchasers should satisfy themselves as to the actual view any apartment will provide. The health and leisure facilities shown in this brochure may be subject to change by any operator or third party undertaking the management branding of the facility space. The Stage is a preferred marketing name only.



