



## Contents

02	02
The Place to Live	Historical
The Place that Lives	Ambassadors
04	40
The Pinnacle	Premium
of London Living	Living
14	72
In and Around	Material Palette
Islington Square	and Specifications
34	78
The Centre	The Space to Live
of Things	The Space to Grow
36	104
Explore the	Contact
Whole of London	

## The Place to Live The Place that Lives

Islington has a fascinating and diverse history. An exciting mix of independent businesses and boutiques, cultural venues and creative hubs makes it one of London's most celebrated areas.

In the heart of the community is Islington Square, a development that builds on the richness and variety of this neighbourhood. At the centre of the scheme is an Edwardian former Royal Mail sorting office, beautifully restored to its former grandeur and importance by CZWG Architects. Above grand new buildings, high arcades and a tree-lined boulevard, they have created fantastic apartments for living, arranged around calming internal landscaped courtyards.

This vibrant addition to Islington includes a prestigious collection of shops, cafés and restaurants alongside warehouse-style apartments. There will be a luxury cinema, The Lounge by Odeon; a 40,000 square foot Third Space premier gym and a new landmark public art commission. It is a city within a city.



At the heart of CZWG Architects' stunning designs for Islington Square is the lovingly restored Edwardian former sorting office building.

## The Pinnacle of London Living

CZWG Architects are renowned for their outstanding schemes that astound and inspire. They describe their dynamic vision for Islington Square as “a love letter to the original great post office buildings”, and it is this Edwardian architecture that has inspired design-led luxury homes that not only reflect Islington’s history, but also reinvent it for a modern lifestyle.

A Penthouse epitomises the very best of Islington Square, from the lovingly restored former mail sorting office to the flamboyant curves of the new building. Its unique architecture creates an abundance of space, offering a floor plan rarely seen in modern developments. A rooftop terrace and floor-to-ceiling windows maximise stunning vistas across London, while the high specification interior sees ornate detailing paired with deluxe touches of marble, oak and leather. A home where heritage meets modern luxury.





A tree-lined boulevard and private outdoor spaces create a relaxed atmosphere, while being at the centre of this vibrant borough.



the lounge  
FINE FOOD AND DRINK

THIRD  
SPACE

Savane  
Coffee

A few steps take you from home to Third Space premier gym to a catch up over coffee.



Independent shops, cosy eateries and stylish bars create a village atmosphere, set back from the bustle of Upper Street.



**THIRD  
SPACE**

**the lounge**  
FINE FOOD AND FILM

THE  
LADY

THE  
LADY

BLACK  
SWAN

With attractions such as The Lounge by Odeon on the doorstep, there's plenty to keep everyone entertained from dawn to dusk.



## In and Around Islington Square

London is famously a city of squares, natural meeting points for the communities around them.

Islington Square will be no different. Sheltered from the traffic on Upper Street, it will be a fresh and lively locality offering a wide range of facilities for recreation and relaxation. Amenities range from the Third Space premier gym with its 25m pool and an extensive programme of classes including yoga and pilates, to the luxury cinema, The Lounge by Odeon, which will host films from blockbusters to art productions, while neighbourhood bars, coffee shops and restaurants make it a destination in its own right.

Two covered shopping arcades link Islington Square to Upper Street, home to independent retailers, renowned restaurants, destination bars, abundant green spaces and the cultural landmarks such as the Almeida and the King's Head Theatre that give Islington its acclaimed reputation. Islington Square will be the centre of a community with everything on its doorstep, exemplifying the best of London.



"Upper Street is filled with wonderful restaurants and shops. I love having Kiehl's, Aēsop and Reiss close. In the evening, the area really comes alive. Take a walk off the main roads and discover some great pubs and restaurants."

Scott Laurie, Manager, Bellanger Restaurant (20)



“Islington maintains a strong community feel within its vibrant culture — there’s really something for everyone. Head to a show at Sadler’s Wells or Almeida Theatre, dinner at Oldroyd and a nightcap at 69 Colebrooke Row cocktail bar.”

Tom Oldroyd, Owner, Oldroyd Restaurant (35)



"I love working in Islington. I was born here, so it's my village and most retailers know me. My favourite place is the club level of Arsenal football club — great for celebrity spotting and meeting interesting people."

Charlie Allen, Charlie Allen Bespoke Tailor (6)



"There's such a creative buzz — people live, work and play together here. Breakfast at a canal-side café, stroll along Camden Passage, stop for a pint of ale at the Camden Head pub, and round it off with a gig."

Pete Stapleton, Venue Manager, Union Chapel (46)(53)



"The thing I love most about Islington is the diverse population and the sense of community that exists. It manages to retain an element of the village lifestyle while being a cosmopolitan, vibrant place."

Marco Wouters, Director, Angel Flowers (17)



"Islington offers a great mix of food, shopping and culture. Go food shopping through Chapel market and see what's on at the Estorick Collection. Eating out isn't a problem — more a conundrum as to what and where to eat!"

Simon Alderson, Co-founder, Twentytwentyone (14)



"We're spoilt for choice in restaurants and you've got everything you need shopping-wise, whether for wife, kids, home or menswear. But it's the people that make Islington — you get the feeling that everyone is happy to be here."

Matt Segal, Manager, Frederick's (27)



"Islington has got the culture that I don't think you find anywhere else. We've many different venues from canal-side pubs, such as the Narrowboat, to cocktail bars like John Salt. I love the atmosphere and ambience in Islington."

Ashlie Kenyon, Manager, King's Head (37)



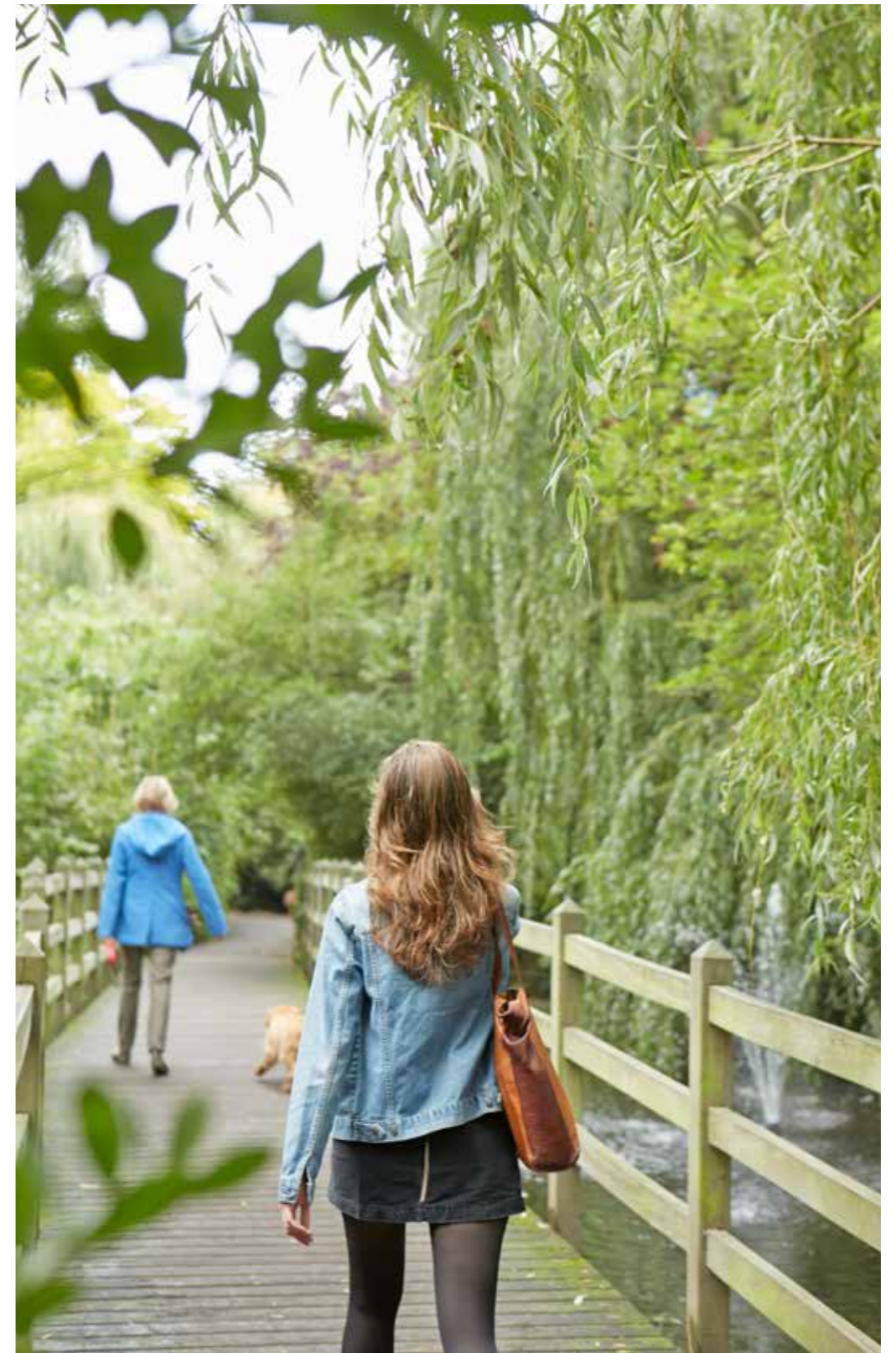


"Islington has some really beautiful streets, green spaces, the canal, and loads of places to stop for sustenance. We're also very lucky to have the Almeida Theatre and Sadler's Wells nearby, where there's always something fantastic on."

Katy Bell, Founder & Creative Director, Lost Property of London (16)



Regent's Canal (55)



ISLINGTON SQUARE



Belle Epoque Patisserie (36)

**Shops**

- 1 Aēsop
- 2 After Noah
- 3 Aria
- 4 Camden Passage
- 5 Cass Art
- 6 Charlie Allen Bespoke
- 7 D & A Binder
- 8 Flashback Records
- 9 Farrow&Ball
- 10 Gill Wing Cook Shop
- 11 Kiehl's
- 12 L'Occitane
- 13 Reiss
- 14 Twentytwentyone
- 15 Waitrose
- 16 Lost Property of London
- 17 Angel Flowers

**Food and Drink**

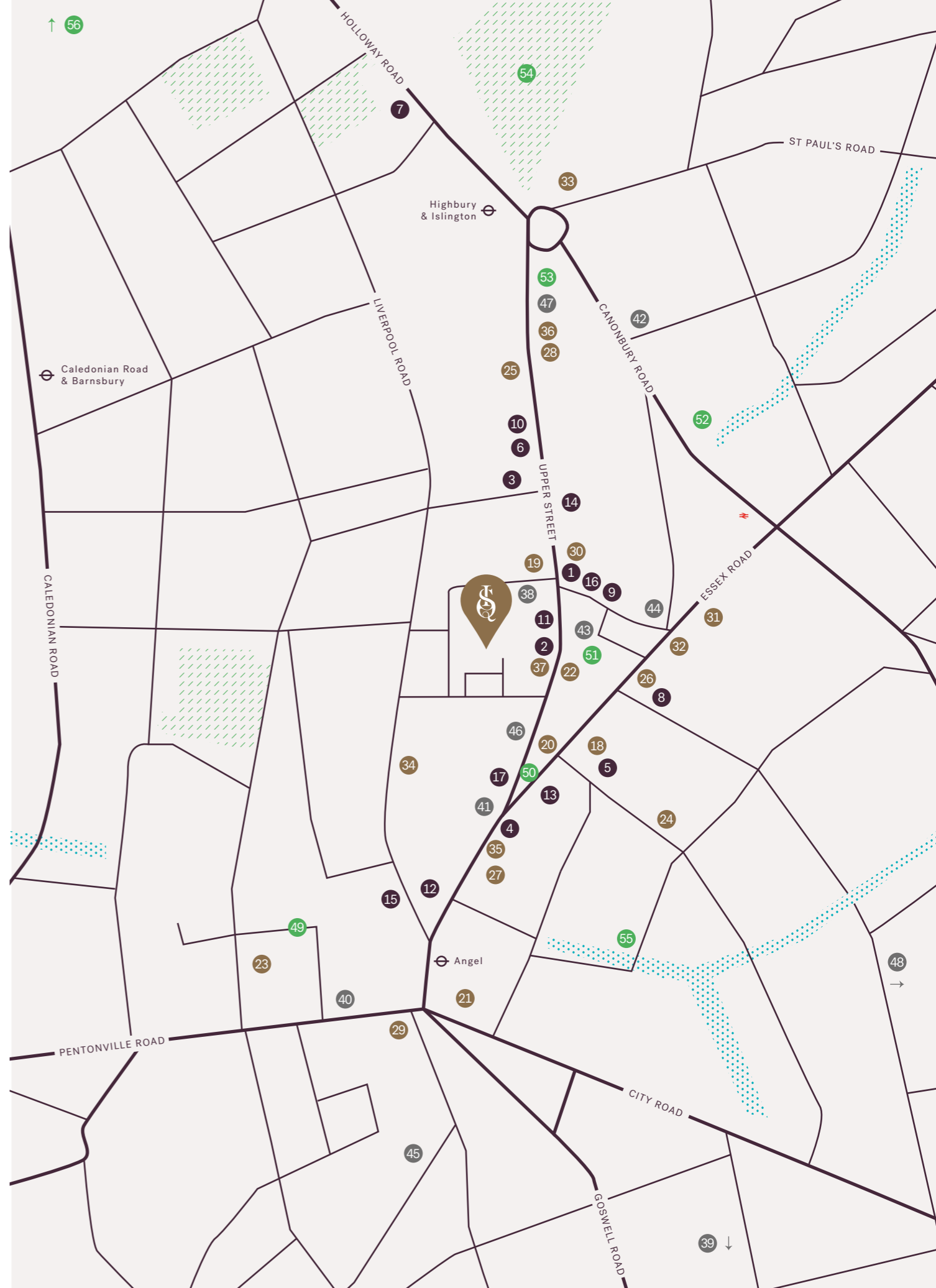
- 18 69 Colebrooke Row
- 19 Almeida
- 20 Bellanger
- 21 Candid Cafe
- 22 Carluccio's
- 23 The Craft Beer Co.
- 24 The Duke of Cambridge
- 25 Euphorium Bakery
- 26 Food Lab
- 27 Frederick's
- 28 Gem Restaurant
- 29 Jamie's Italian
- 30 Ottolenghi
- 31 Raab's the Bakers
- 32 Steve Hatt, Fishmonger
- 33 Trullo
- 34 Yipin China
- 35 Oldroyd
- 36 Belle Epoque Patisserie
- 37 King's Head

**Art & Culture**

- 38 Almeida Theatre
- 39 Contemporary Art Society
- 40 The Craft Council
- 41 Business Design Centre
- 42 Estorick Collection of Modern Italian Art
- 43 Little Angel Theatre
- 44 Tintype Gallery
- 45 Sadler's Wells Theatre
- 46 Screen on the Green
- 47 Union Chapel Concert Hall
- 48 Waterside Contemporary

**Parks & Amenities**

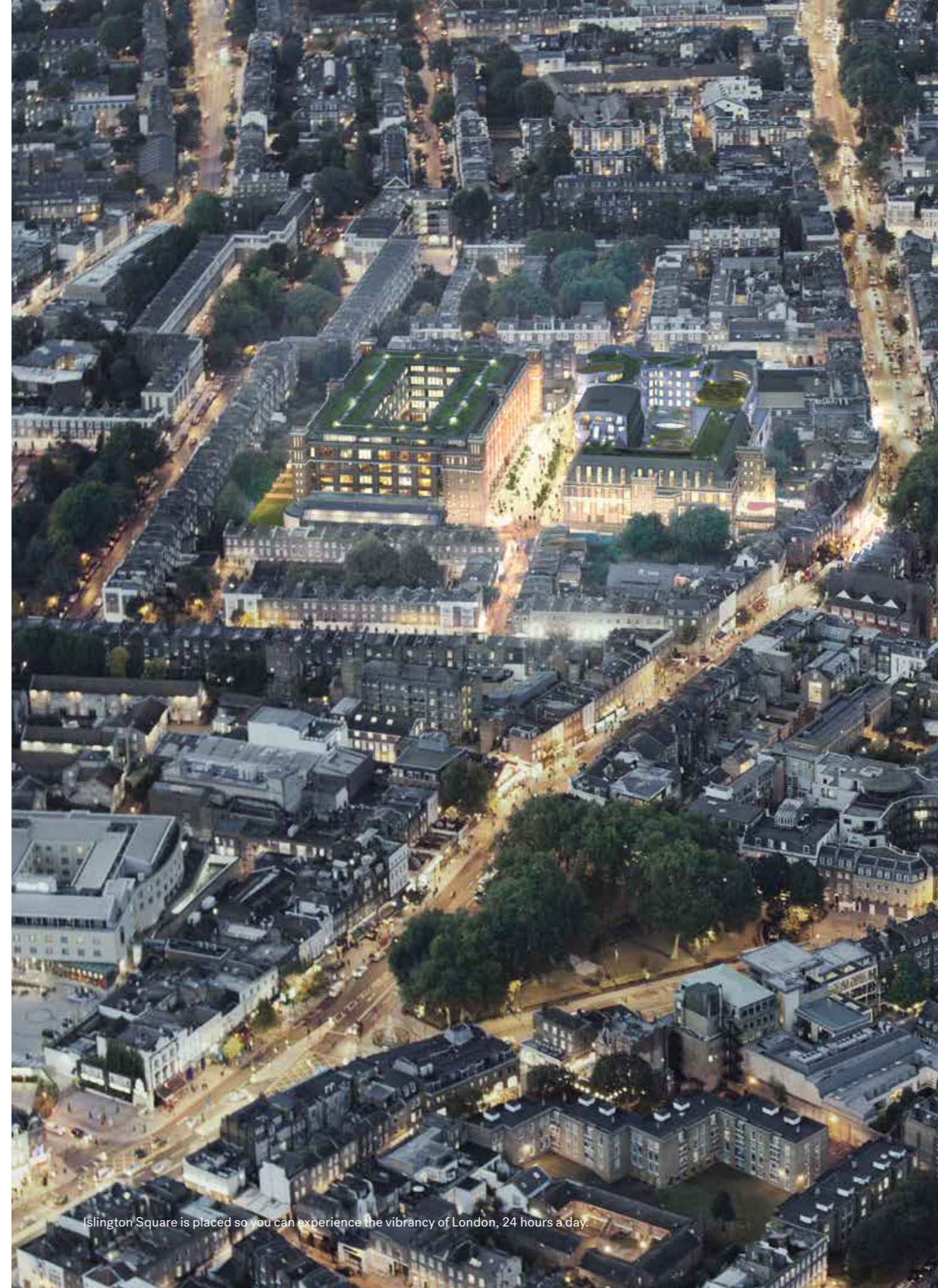
- 49 Chapel Market
- 50 Islington Green
- 51 St Mary's Church Gardens
- 52 New River Walk
- 53 Union Chapel
- 54 Highbury Fields
- 55 Regent's Canal
- 56 Parkland Walk

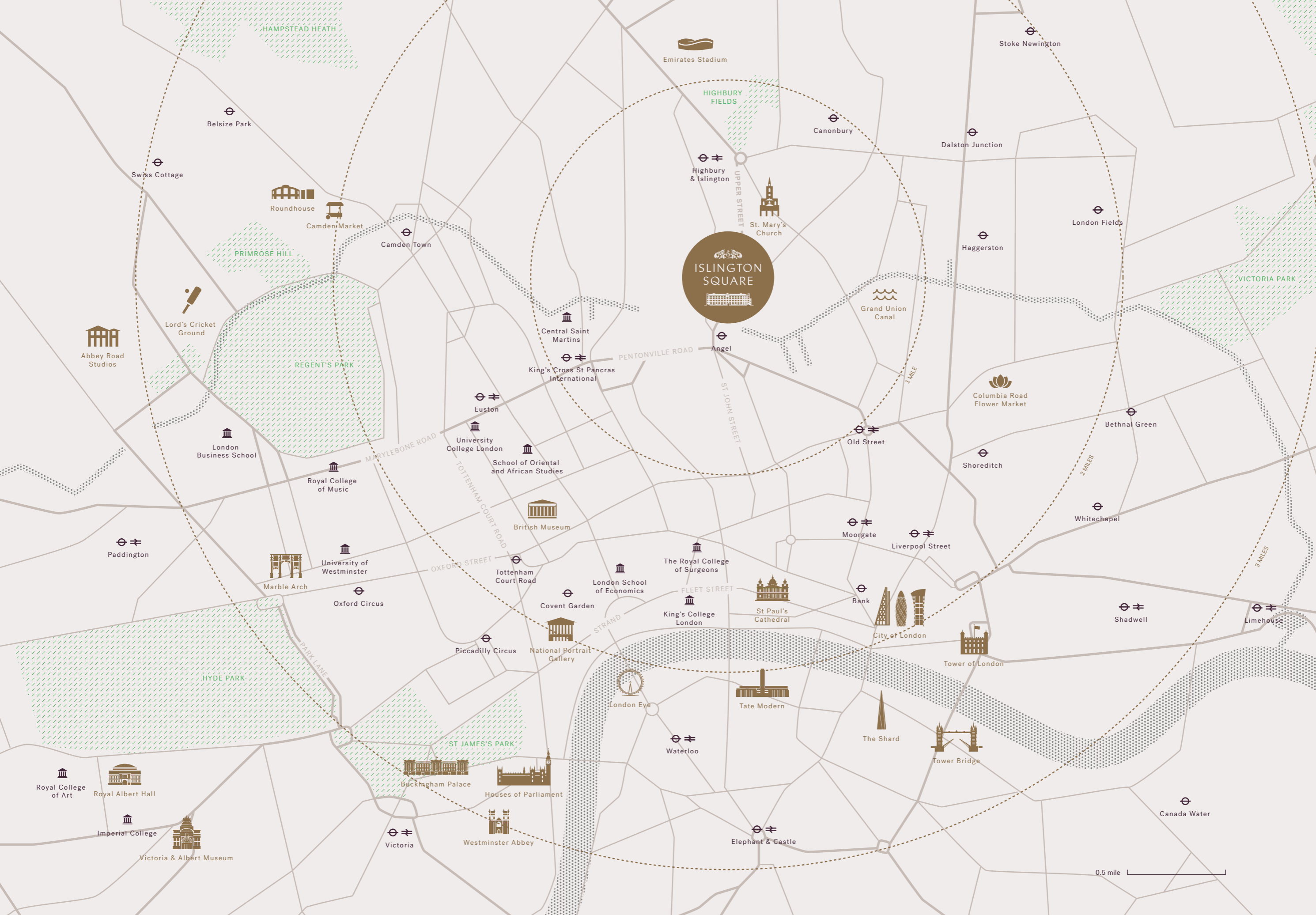


## The Centre of Things

Islington Square puts you in the heart of this bustling borough. Exploring your neighbourhood you'll be inspired, as have so many before you, by this exciting area. As well as leafy squares, historic backstreets and creative hotspots, some of Britain's finest educational establishments — including Central Saint Martins, University College London and London School of Economics — are located within a few miles from Islington Square.

From a Penthouse, you'll see the panoramas of the city stretching out before you, with London's famous landmarks — from the British Museum to St Paul's Cathedral; the hills of Highgate to the skyscrapers of Canary Wharf — within its radius. Islington is the perfect starting point for experiencing the best of the capital, surrounded by the kinds of museums, galleries and shopping destinations that people fly halfway round the world to see.





ISLINGTON SQUARE

HAMPSTEAD HEATH

HIGHBURY FIELDS

PRIMROSE HILL

REGENT'S PARK

VICTORIA PARK

HYDE PARK

ST JAMES'S PARK

Emirates Stadium

Stoke Newington

Belsize Park

Canonbury

Dalston Junction

Swiss Cottage

Roundhouse

Camden Market

Camden Town

Highbury & Islington

St. Mary's Church

London Fields

Haggerston

Grand Union Canal

Abbey Road Studios

Lord's Cricket Ground

Central Saint Martins

King's Cross St Pancras International

Angel

Columbia Road Flower Market

Bethnal Green

London Business School

Royal College of Music

Euston

University College London

School of Oriental and African Studies

Old Street

Shoreditch

Whitechapel

Paddington

University of Westminster

British Museum

The Royal College of Surgeons

Moorgate

Liverpool Street

Shadwell

Limehouse

Marble Arch

Oxford Circus

Tottenham Court Road

Covent Garden

London School of Economics

King's College London

St Paul's Cathedral

Bank

City of London

Tower of London

ROYAL COLLEGE OF ART  
ROYAL ALBERT HALL  
IMPERIAL COLLEGE  
VICTORIA & ALBERT MUSEUM

Buckingham Palace

Buckingham Palace

Houses of Parliament

London Eye

Tate Modern

The Shard

Tower Bridge

Waterloo

Elephant & Castle

Canada Water

0.5 mile

## Explore the Whole of London

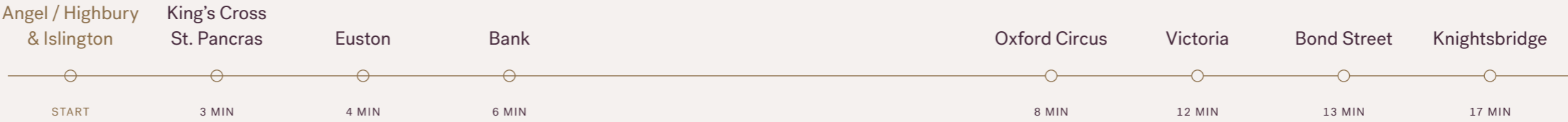
From Islington, excellent transportation links mean the whole of London is at your feet. Discover the waterside cafés along the Regent's Canal, a short stroll from Islington Square or take a cycle ride to explore Regent's Park and Green Park. With both Highbury & Islington and Angel tube stations only steps away, you can be in the heart of the City at Bank in six minutes, world famous shopping districts including Bond Street and Knightsbridge can be reached in less than twenty minutes, and it is an easy escape to the green spaces of Hampstead Heath and Kew Gardens. Only a hop away is the Eurostar, meaning Islington is your gateway to Europe, as well as the full sweep of London.



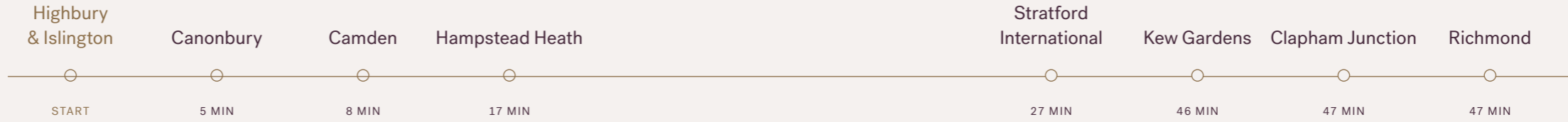
# Transport Links



UNDERGROUND

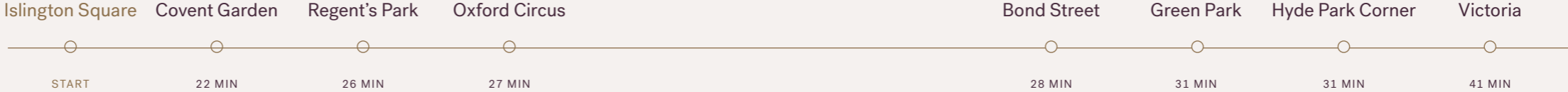


OVERGROUND

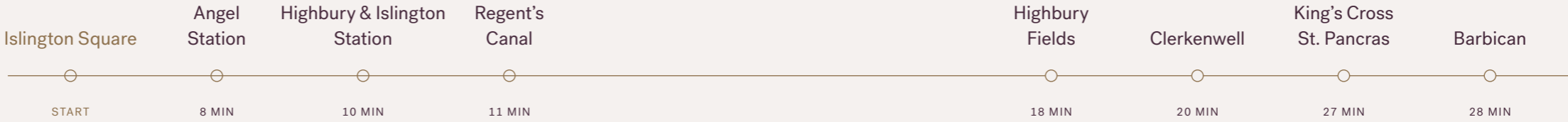


CYCLING

Closest cycling docking station is 4 min away



WALKING

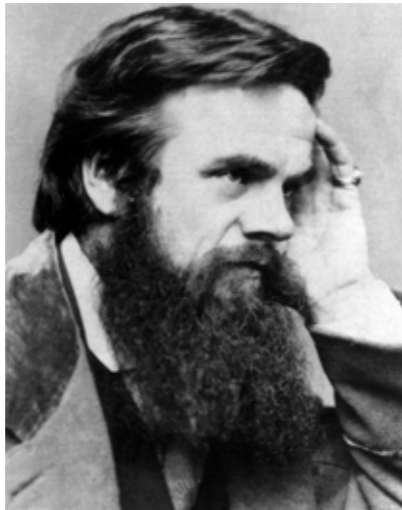


All times are approximate  
Source: Citymapper and TfL

## Historical Ambassadors

Set up home in Islington and you will be choosing the same neighbourhood as some of London's most celebrated creative figures in the fields of literature, art, music, film and theatre, politics and philosophy.

Founding member of the Pre-Raphaelites artistic movement William Holman Hunt painted here in the mid-19th century, a century later Benjamin Britten composed classical scores in the borough, and in the surrounding years, many more Islington residents have made their name as pioneers in the fields of art, music, politics and philosophy.



William Holman Hunt  
2 Apr 1827 - 7 Sep 1910

"The door of the human heart, can only be opened from the inside."



Benjamin Britten  
22 Nov 1913 - 4 Dec 1976

"Composing is like driving down a foggy road toward a house. Slowly you see more details of the house — the colour of the slates and bricks, the shape of the windows. The notes are the bricks and the mortar of the house."

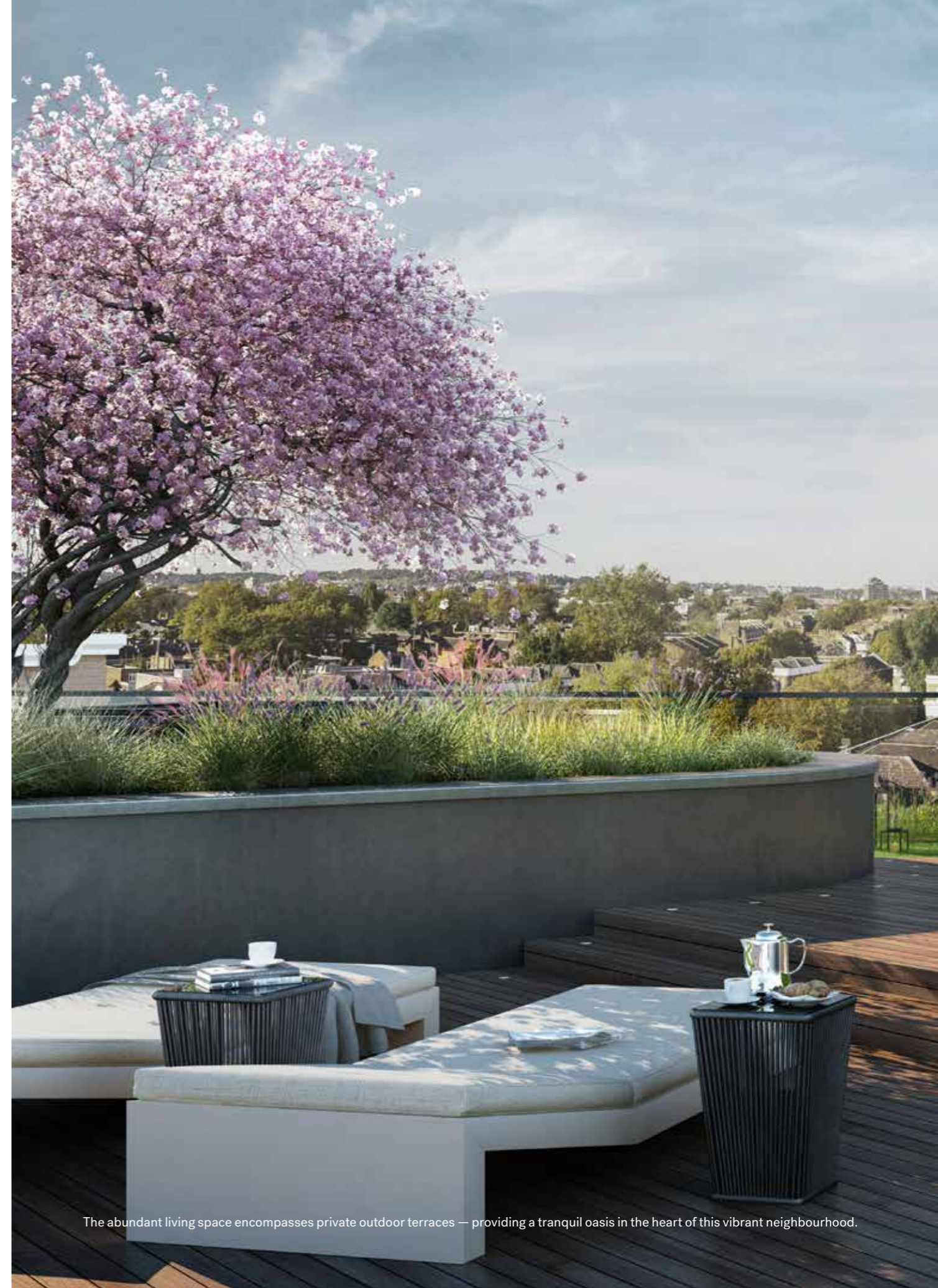


## Premium Living with a View

Combining heritage and craftsmanship with contemporary luxury, a Penthouse offers the best of London living from within the heart of a community.

A Penthouse reflects the personality of Islington Square. Within the former mail sorting office, you'll discover heritage-inspired apartments that marry tradition with the latest luxury. The exuberant curves of the new buildings, meanwhile, have shaped uniquely flamboyant, contemporary spaces. A Penthouse offers modern, luxurious designs by Wish London thoughtfully created in keeping with the spirit of the architecture.

A Penthouse is characterised by generously proportioned floor plans scarcely found in more recent developments. The generosity continues to the outdoor space, with a sweeping balcony and a beautifully landscaped private roof terrace providing places of tranquility while in the heart of the city. Building on Islington Square's impressive tradition, the best materials and detailing have been used to create exquisite homes of 21st-century comfort.



# Penthouse Collection



P

P

A

B

P

P

A

B

- Penthouse Entrance
- The Lounge by Odeon
- The Third Space Family Health Club

APPROX.  
20-25 M

ALMEIDA STREET

SHELLEY PLACE

ESTHER ANNE PLACE

UPPER STREET

WICKS PLACE



A modern mix of materials, from the Corten steel feature wall to the parquet flooring, the bespoke lacquered doors to the bronze detailing.



Double-glazed doors from the entrance hall lead into the generous living space, incorporating timber and concrete floors.



Carefully considered finishes selected by Wish Interiors provide a stunning backdrop for creating a space you can truly make your own.

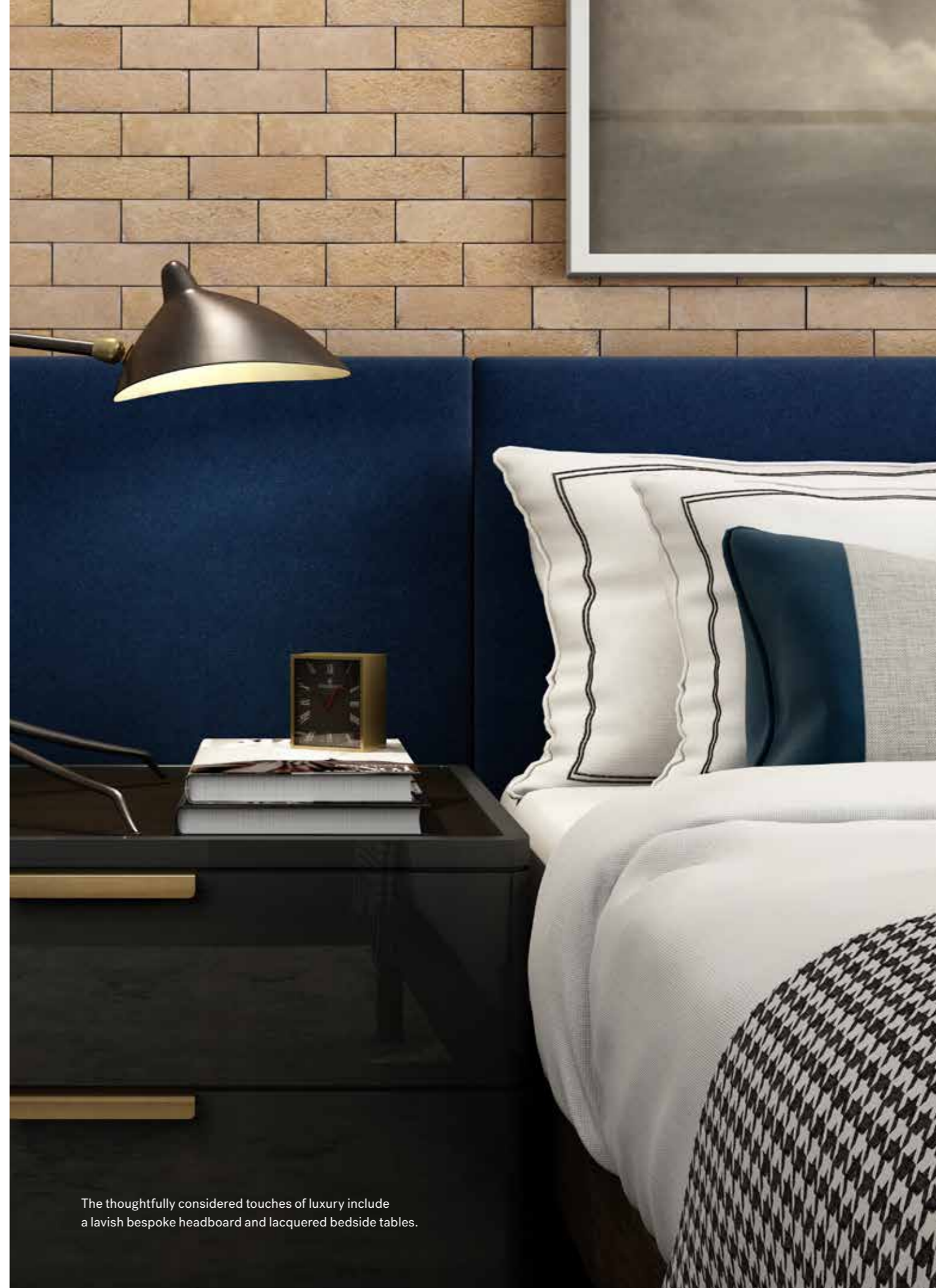




Full height feature brick walls and floating ceilings define the space, against the stunning backdrop of London's skyline.



A modern blend of heritage materials in the master bedrooms, with timber floors, brick feature walls and double-glazed sliding doors.



The thoughtfully considered touches of luxury include a lavish bespoke headboard and lacquered bedside tables.





A focal point of the living space is the stunning hand-crafted Valcucine Artematica kitchen, with matt black glass cabinetry.



The clean lines of the Valcucine kitchen are enhanced by an illuminated back panel, and the latest luxury appliances.





The fully-tiled master bathroom combines contemporary materials and craftsmanship, with bespoke cabinetry and a book-matched Arabescato marble feature wall.

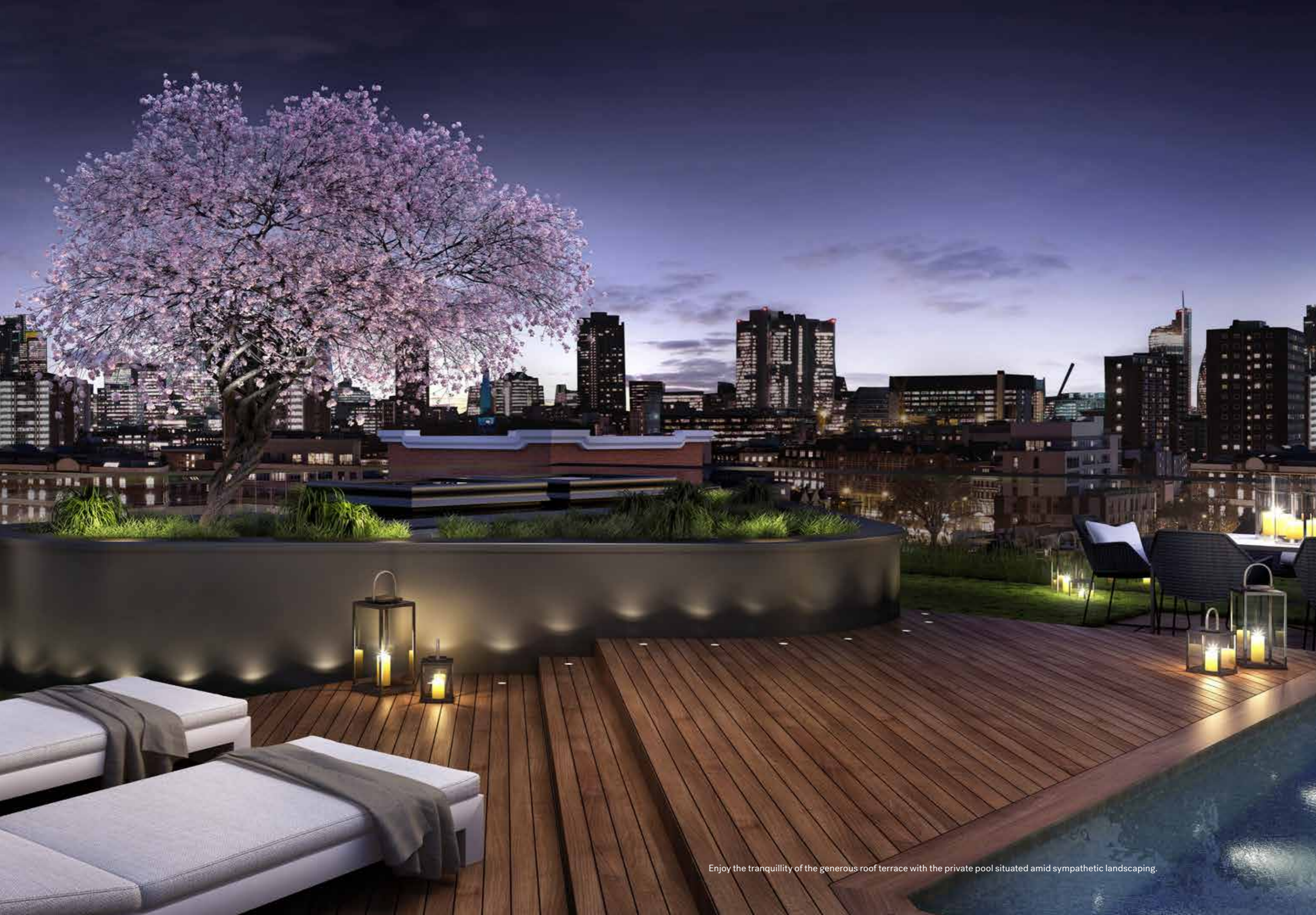


The clean lines of the guest bathrooms are enhanced with feature marble panels, bespoke cabinetry and bronze framework details.





The wide balconies provide an extension to the living space with concrete tiled floors and feature mood lighting.

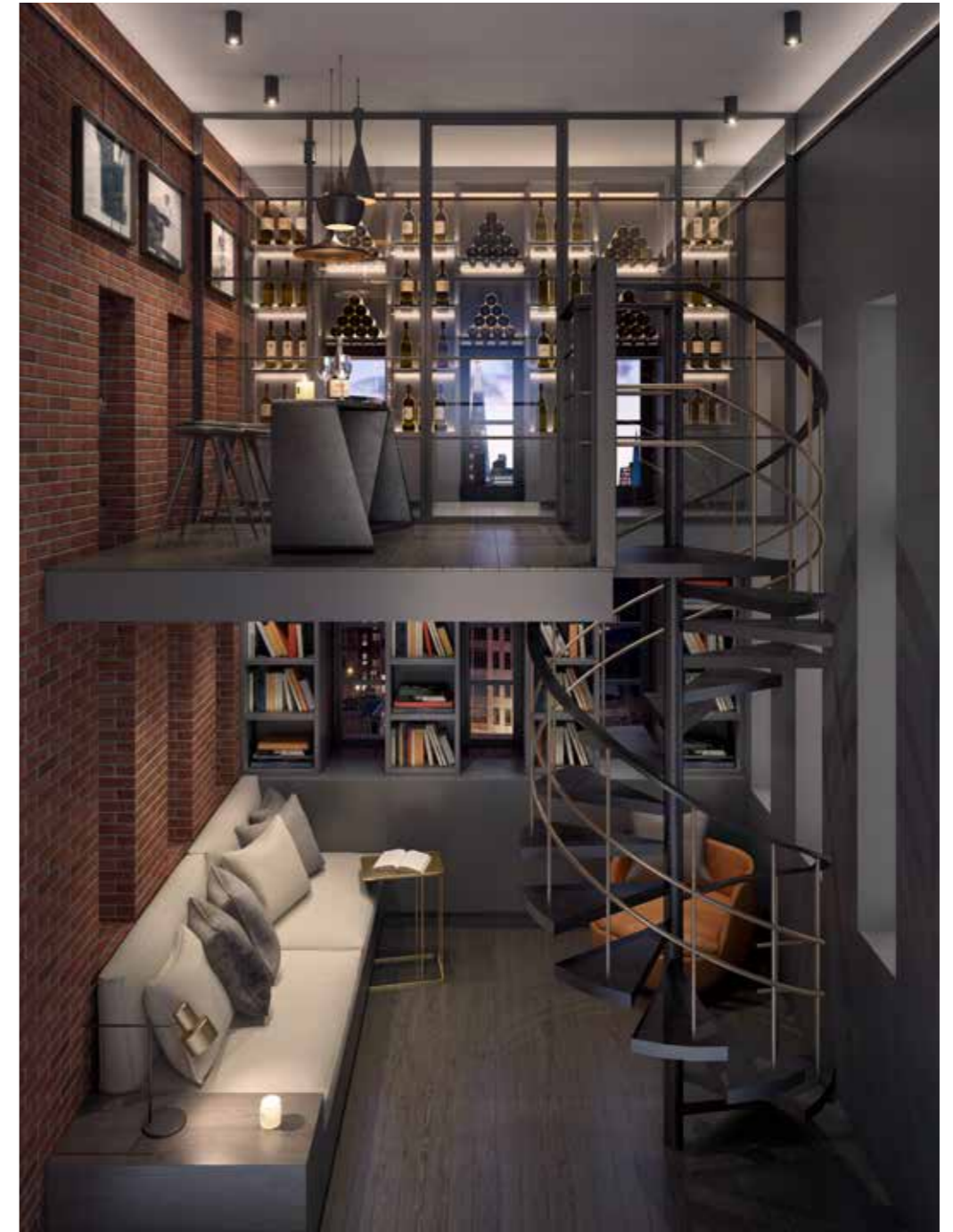


Enjoy the tranquillity of the generous roof terrace with the private pool situated amid sympathetic landscaping.



## The Turret Room

From the balcony, discover the turret room. Part of the Edwardian architecture, this lovingly restored space, at just under five metres high, offers a unique, versatile addition to the living area. Whether used as a social space or a private retreat — from a spa and sauna or mini gym to a full-height wine room or dedicated library — it offers countless possibilities.





## The Kitchen and Living Space



Individually designed layouts employ glazed doors with elegant metal frames, bronze detailing and reclaimed brick feature walls to reference the building's historic architecture. A refined mix of luxury materials, including oak timber floors, corten steel panels and bespoke concrete flooring, complements the handcrafted black glass Valcucine kitchen.



## The Master Bathroom and Ensuite Bathrooms



An elegant pairing of heritage materials and contemporary craftsmanship, created with durable and luxurious materials. Full height porcelain tiles are mixed with feature marble panels, bespoke lacquered vanity units and cabinets framed in bronze. Glass shelving and polished chrome fittings enhance the feel of modern luxury.



## Specifications

### KITCHENS

1. Individually-designed coordinated layouts
2. Valcucine Artematica or similar kitchen units and island
3. Valcucine or similar matt black glass worktops and illuminated back panel
4. High quality under-mounted stainless steel sink with luxury mixer taps
5. Concealed multi-gang appliance panel
6. Hallways, living room/open plan kitchen areas have timber engineered floors laid over an acoustic separation layer
7. Integrated fridge and freezer
8. Built-in microwave and oven
9. Inset touch-control induction hob
10. Re-circulating integrated extractor or variable height stainless steel island extractor
11. Integrated dishwasher
12. Freestanding washer dryer located in a dedicated utility zone
13. All appliances are 'A'-rated
14. Wall units with under-lighting as required

### MASTER BEDROOMS

1. Hallways, living room / open plan kitchen areas have timber engineered floors laid over an acoustic separation layer
2. Glazed doors leading into master bathroom
3. Dressing room with high quality wardrobe units and integrated lighting

### MASTER BATHROOMS

1. Coordinated bathrooms and shower rooms
2. Ceramic floor and full height wall tiling
3. Freestanding double-ended bath with floor mounted mixer tap and handheld shower
4. WC cubicle with glazed door and wall hung ceramic WC
5. Steam shower with integrated tiled shower bench and floors with linear shower waste
6. Freestanding bespoke vanity unit with marble top and wall mounted mixer tap
7. Vanity recess with metal framework and suspended circular mirror
8. Feature marble wall behind bath
9. Shower fittings with thermostatic controls, all in polished chrome
10. Heated towel rails to bathrooms and shower rooms
11. Integrated shaver socket / toothbrush socket

### GUEST BATHROOMS AND WCS

1. Coordinated porcelain floor and full height wall tiling
2. Italian stone feature panels
3. Glass shower surrounds and WC enclosure
4. Bespoke lacquered vanity unit with fabricated metal framework and glass shelving
5. Bespoke lacquered cabinets with push catches
6. Heated towel rails to bathrooms and shower rooms

### ENTRANCE HALLS

1. Bespoke corten steel fabricated feature wall panels
2. Engineered oak flooring
3. Oak-tread staircase with steel handrail and glass balustrade
4. Metal-framed glass doors and glass panel feature
5. Recessed mirrored cloak cupboard
6. Bespoke designed hardwood entrance door with hardwood architraves

### CLOAKROOMS

1. Marble feature wall slabs
2. Bespoke lacquered vanity unit with metal framing
3. Suspended decorative mirror

### HEATING AND COOLING (WHERE APPLICABLE)

1. Heating and hot water from a communal system utilises ground sourced water and heat pumps to provide a modern, sustainable energy solution
2. Underfloor heating
3. Heated towel rails to bathrooms and shower rooms
4. Comfort cooling system

### ELECTRICAL FITTINGS

1. Coordinated lighting scheme includes feature ceiling coffers in selected locations
2. Recessed down-lighters in selected locations
3. Recessed wallwashers in corridor and master bedroom
4. Television points (terrestrial and satellite) to reception rooms and principal bedrooms
5. Telephone and data points to reception and principal bedrooms
6. Dimmer light controls where applicable (rocker switches where energy efficient lights are used)

### HOME TECHNOLOGY

1. A fully integrated cable structure that allows for a range of advanced home automation features including keypads to replace light switches and Cat 6 cabling for AV, telephone and data systems

### SECURITY AND CONCIERGE

1. 24/7 concierge service controlling access to apartments
2. Multi-point locking and spy hole to apartment entrance doors
3. CCTV security system to communal areas linked in to the central management system
4. Daily refuse collection

### CAR AND BICYCLE PARKING

1. Secure private underground parking and bicycle storage areas subject to availability

### ARCHITECT-DESIGNED ENTRANCE FOYER

1. Spacious reception area with bespoke features including stone floor, ceiling and panelling to walls
2. Comfortable and elegantly furnished seating area for residents
3. Secure mail room adjacent to concierge station
4. Bespoke concierge desk with security monitors serving all addresses
5. Feature lighting

### LIFTS

1. Passenger lifts serve all residential levels and underground parking

### OUTSIDE SPACE

1. Perimeter decked terrace
2. Private rooftop garden with endless swimming pool
3. Breathtaking panoramic views of London
4. Access to communal landscaped gardens
5. All external areas have lighting and 13-amp power point
6. Watering points provided

### AMENITIES

1. Access to the unique wellness centre created by Third Space

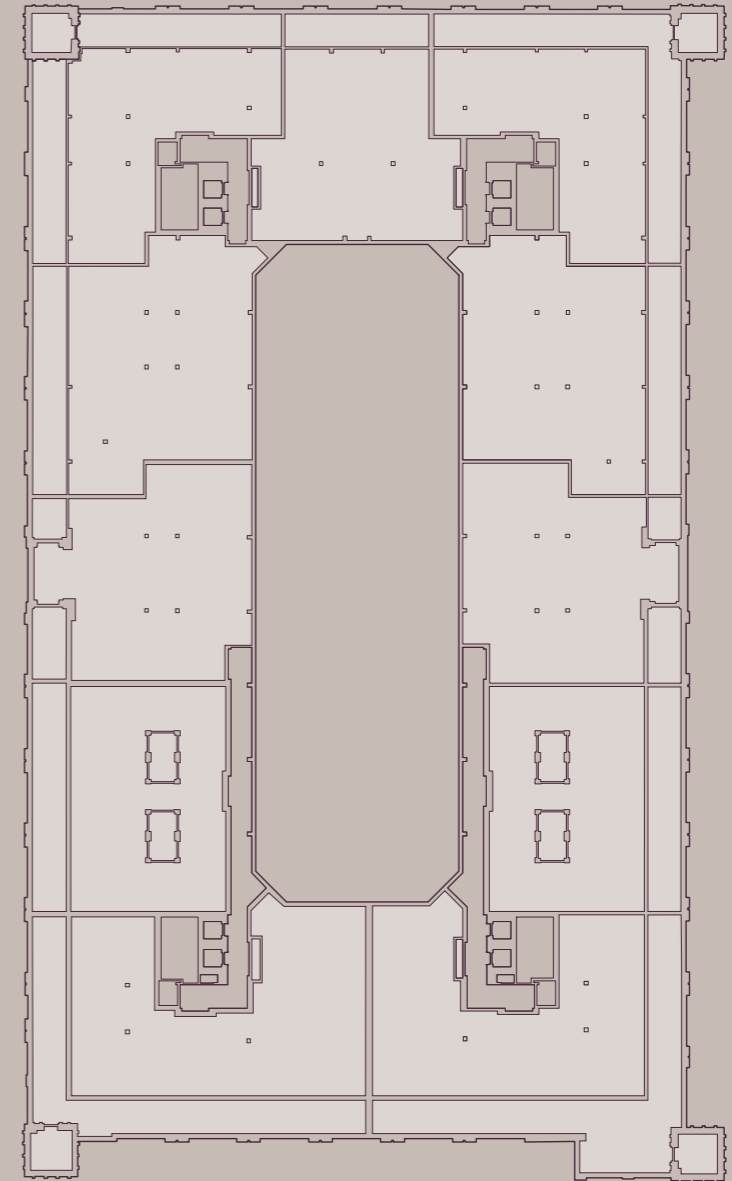
### GUARANTEE

1. 10-year build warranty

Please note that these details may vary between apartments

## The Space to Live The Space to Grow

A Penthouse is defined by its lavish lateral sweep. Its grand dimensions includes an expanse of up to 2,687 square foot over one level, creating a breathtaking setting that can adapt with your needs. A space that flows from the front door through floor-to-ceiling windows to a perimeter roof terrace; from the living space up through to the private rooftop garden and individual swimming pool. Somewhere you can be inspired to truly make your own.

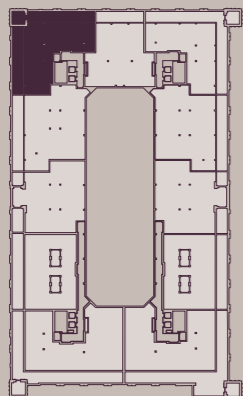


PENTHOUSE 501

First Floor



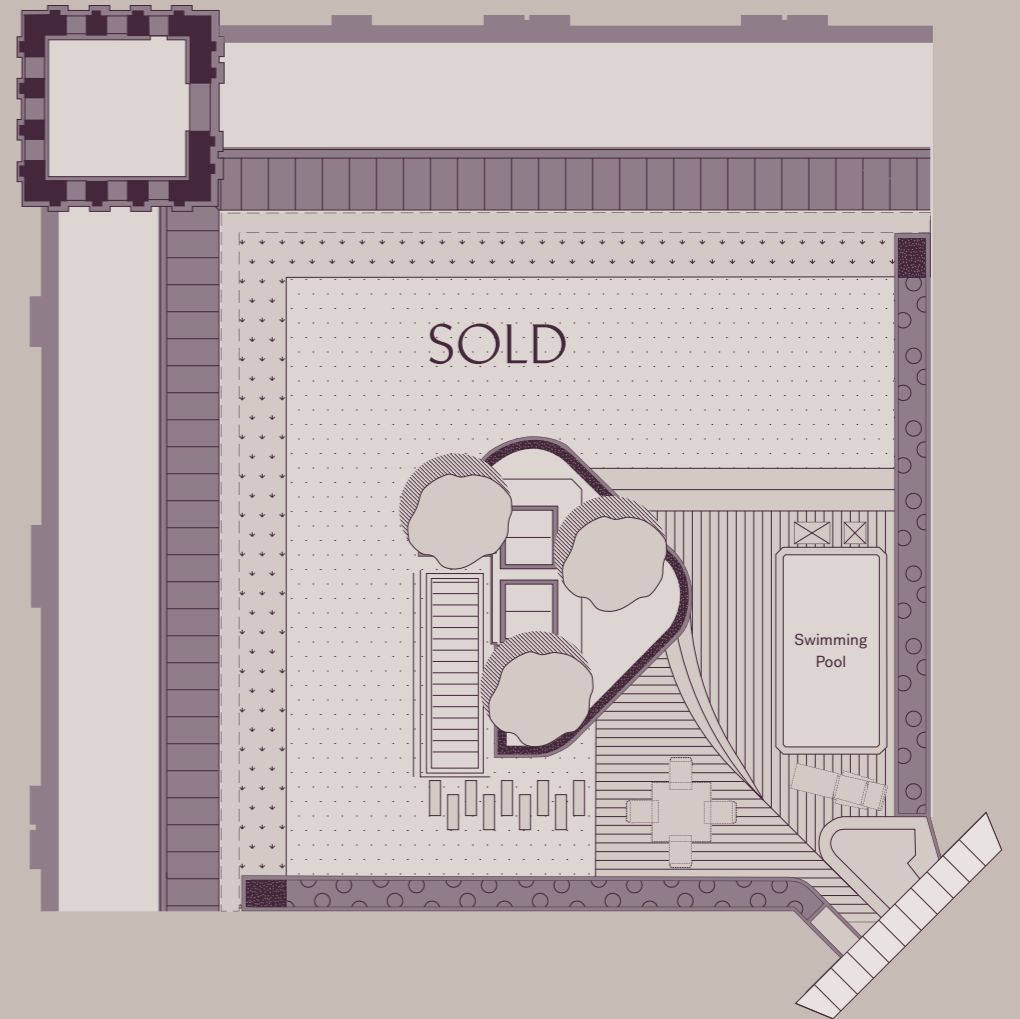
SOLD



	m	ft
Turret	3.03 × 3.04	9.94 × 9.97
Terrace	15.80 × 2.48	51.84 × 8.14
	15.60 × 2.41	51.18 × 7.91

Floor 5 — P-5.1

Rooftop Garden



SOLD

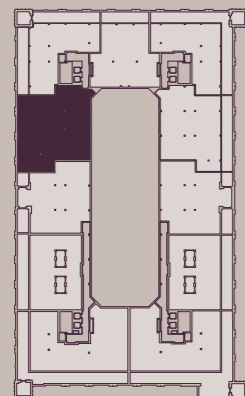
Swimming Pool



	m	ft
Garden	13.97 × 14.35	45.83 × 47.08
<b>Total</b>	<b>200.25 sqm</b>	<b>2155.47 sqft</b>

PENTHOUSE 502

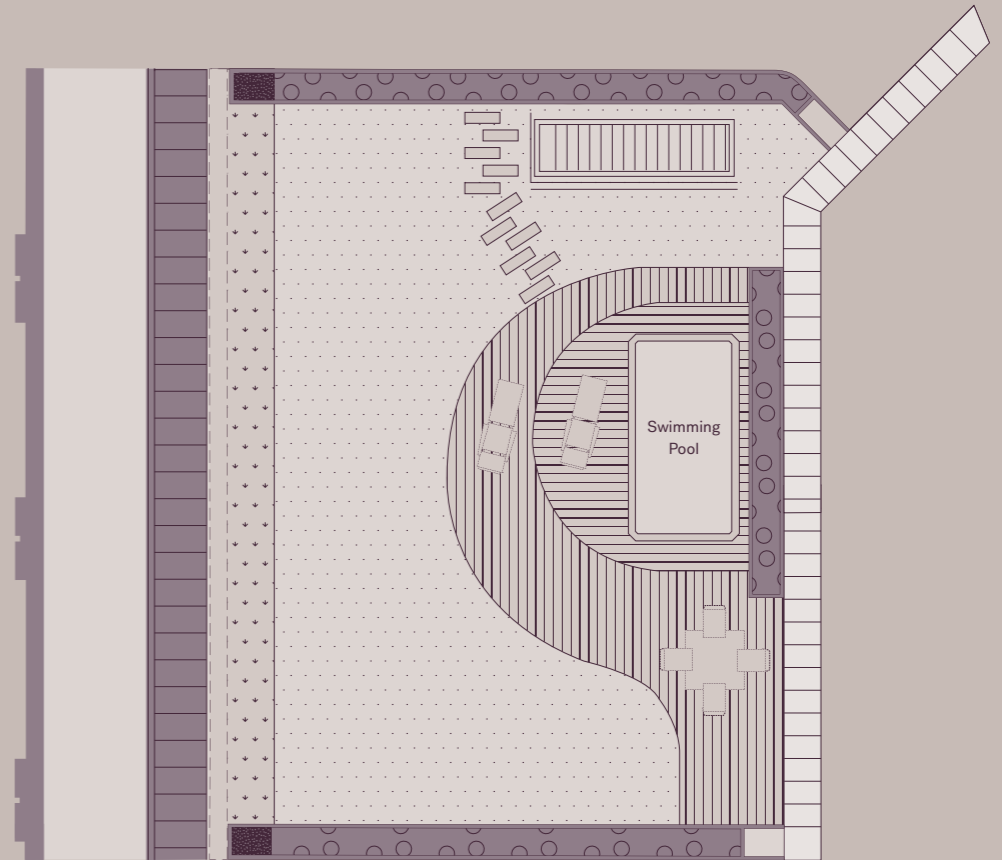
First Floor



	m	ft
Living / Dining (inc. kitchen)	6.91 × 13.05	22.67 × 42.81
Bedroom 1	5.82 × 6.63	19.09 × 21.75
Bedroom 2	5.82 × 5.11	19.09 × 16.77
Bedroom 3	8.36 × 4.57	27.43 × 14.99
<b>Total</b>	<b>249.60 sqm</b>	<b>2686.67 sqft</b>
Terrace	17.80 × 2.48	58.40 × 8.14

Floor 5 — P-5.2

Rooftop Garden

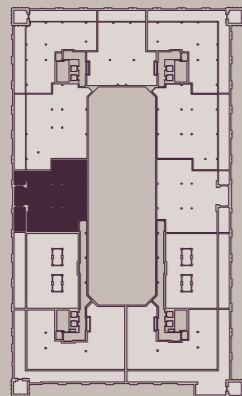
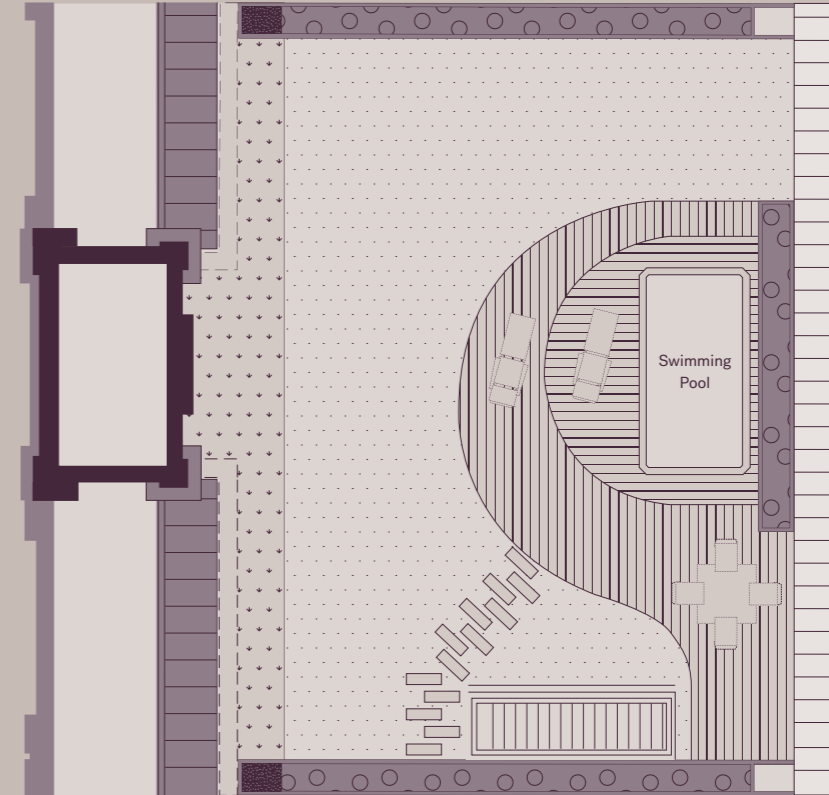


	m	ft
Garden	17.00 × 12.20	55.77 × 40.03
<b>Total</b>	<b>207.66 sqm</b>	<b>2235.23 sqft</b>

PENTHOUSE 503  
First Floor



Rooftop Garden



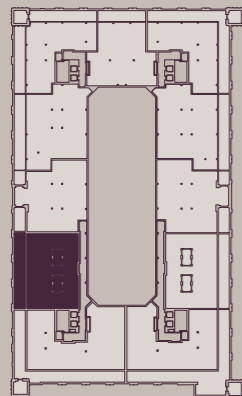
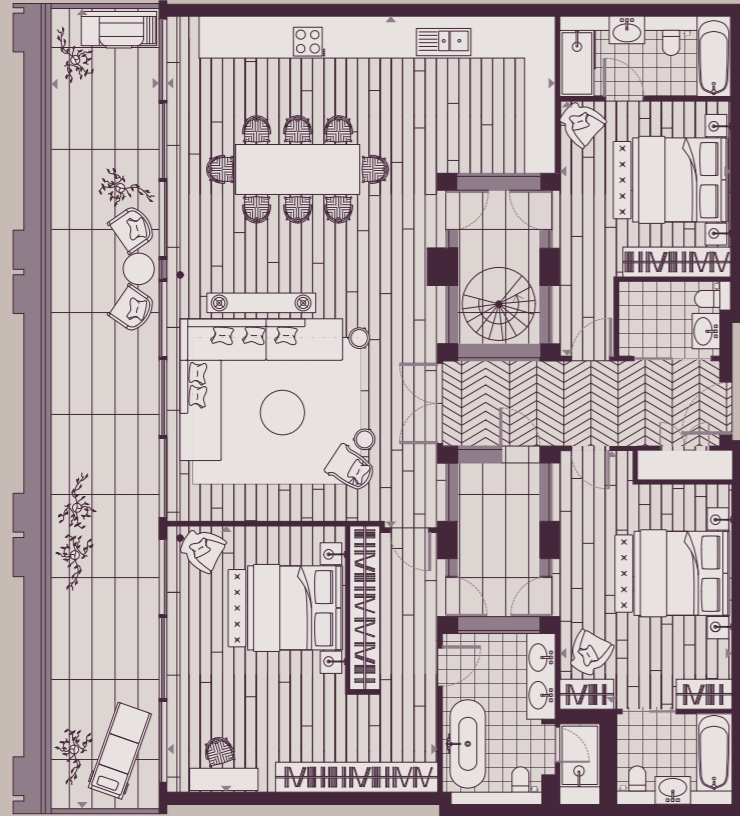
	m	ft
Living / Dining (inc. kitchen)	8.59 × 14.55	28.18 × 47.74
Bedroom 1	6.73 × 4.87	22.08 × 15.98
Bedroom 2	6.73 × 4.68	22.08 × 15.35
Bedroom 3	6.73 × 3.32	22.08 × 10.89
<b>Total</b>	<b>234.10 sqm</b>	<b>2519.83 sqft</b>
Terrace	3.43 × 2.49	11.25 × 8.17
	6.11 × 2.51	20.05 × 8.23

Floor 5 — P-5.3



	m	ft
Garden	16.56 × 12.20	54.33 × 40.03
<b>Total</b>	<b>206.58 sqm</b>	<b>2223.61 sqft</b>

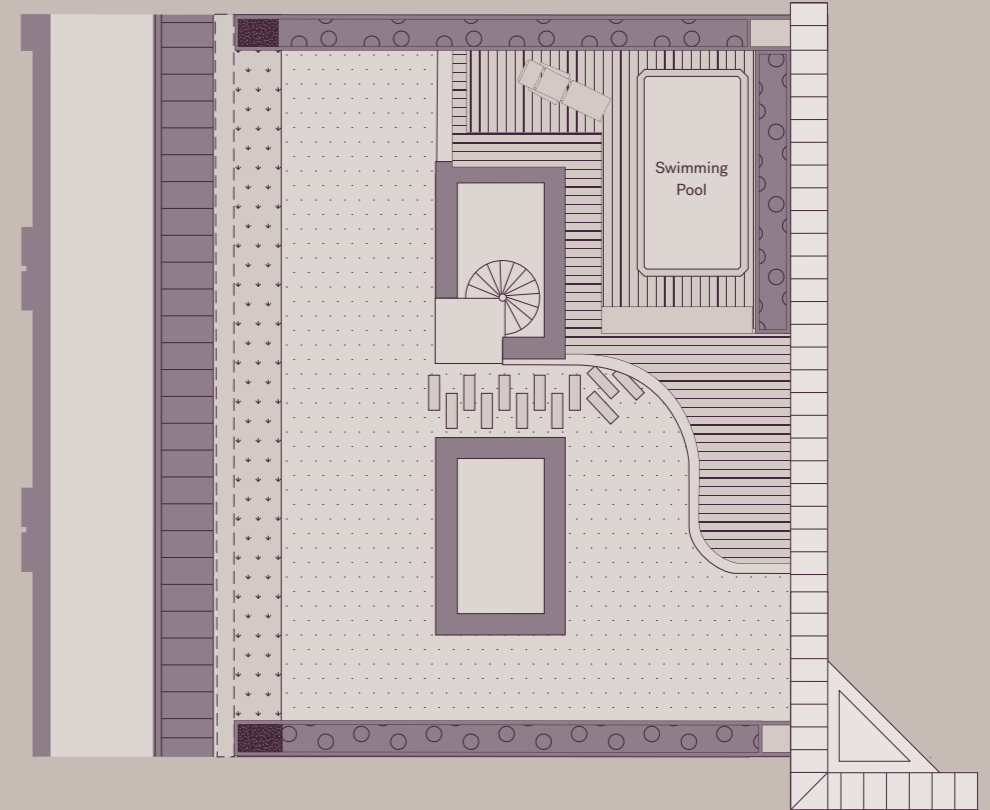
PENTHOUSE 504  
First Floor



	m	ft
Living / Dining (inc. kitchen)	8.54 × 11.26	28.02 × 36.94
Bedroom 1	5.95 × 5.84	19.52 × 19.16
Bedroom 2	3.78 × 5.70	12.40 × 18.70
Bedroom 3	3.78 × 5.40	12.40 × 17.72
<b>Total</b>	<b>214.70 sqm</b>	<b>2311.01 sqft</b>
Terrace	17.22 × 2.50	56.50 × 8.20

Floor 5 — P-5.4

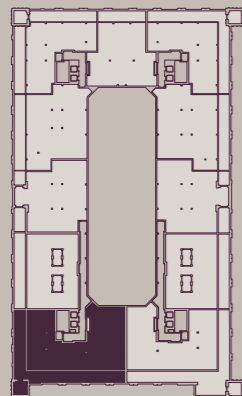
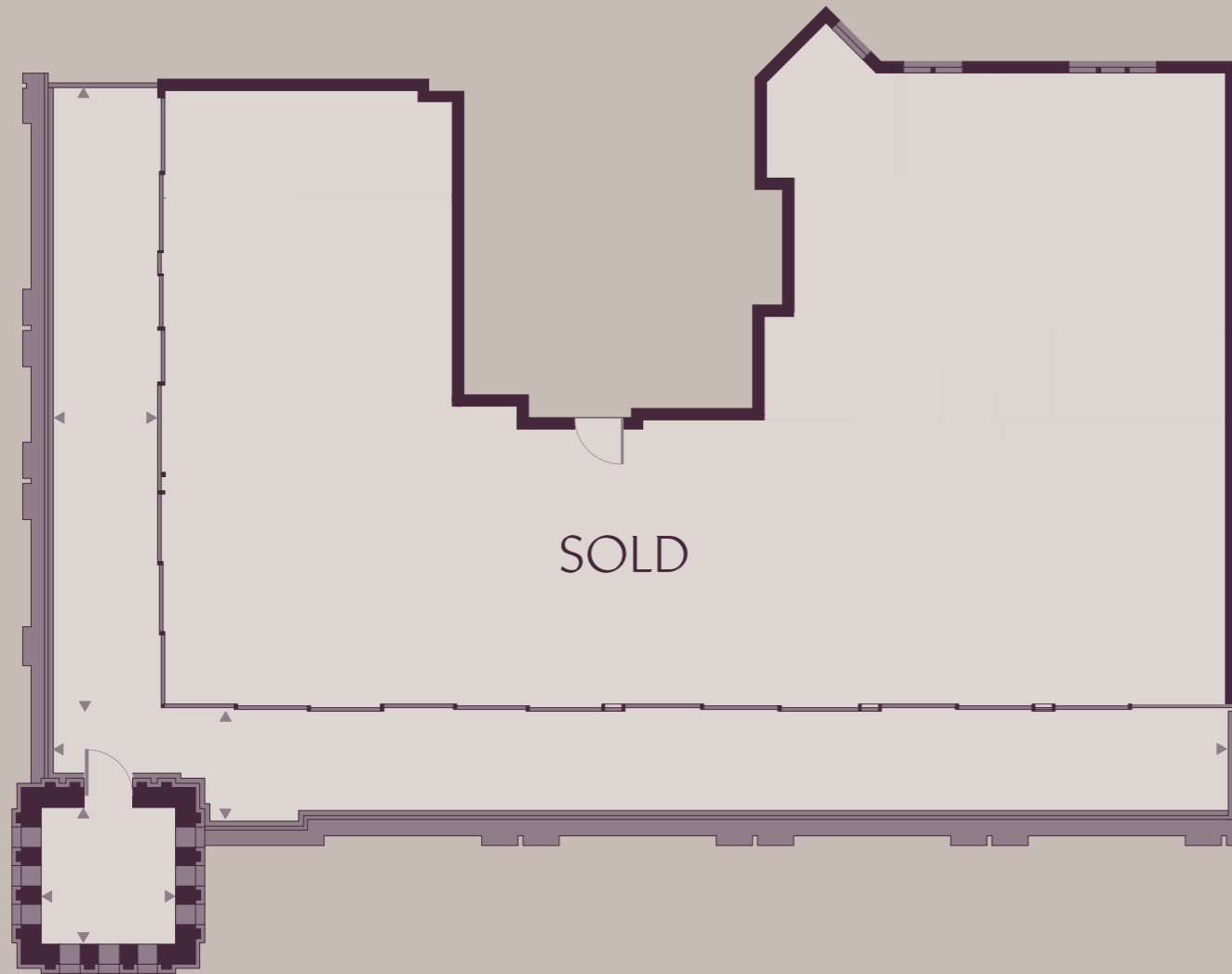
Rooftop Garden



	m	ft
Garden	16.07 × 12.20	52.72 × 40.03
<b>Total</b>	<b>195.74 sqm</b>	<b>2106.93 sqft</b>



PENTHOUSE 505  
First Floor



	m	ft
Turret	3.03 × 3.02	9.94 × 9.91
Terrace	27.88 × 2.74	91.47 × 8.99
	2.50 × 14.77	8.20 × 48.46

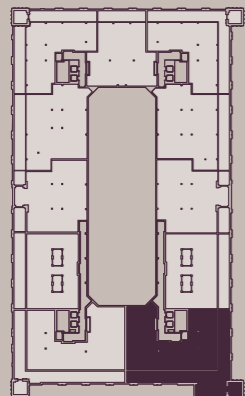
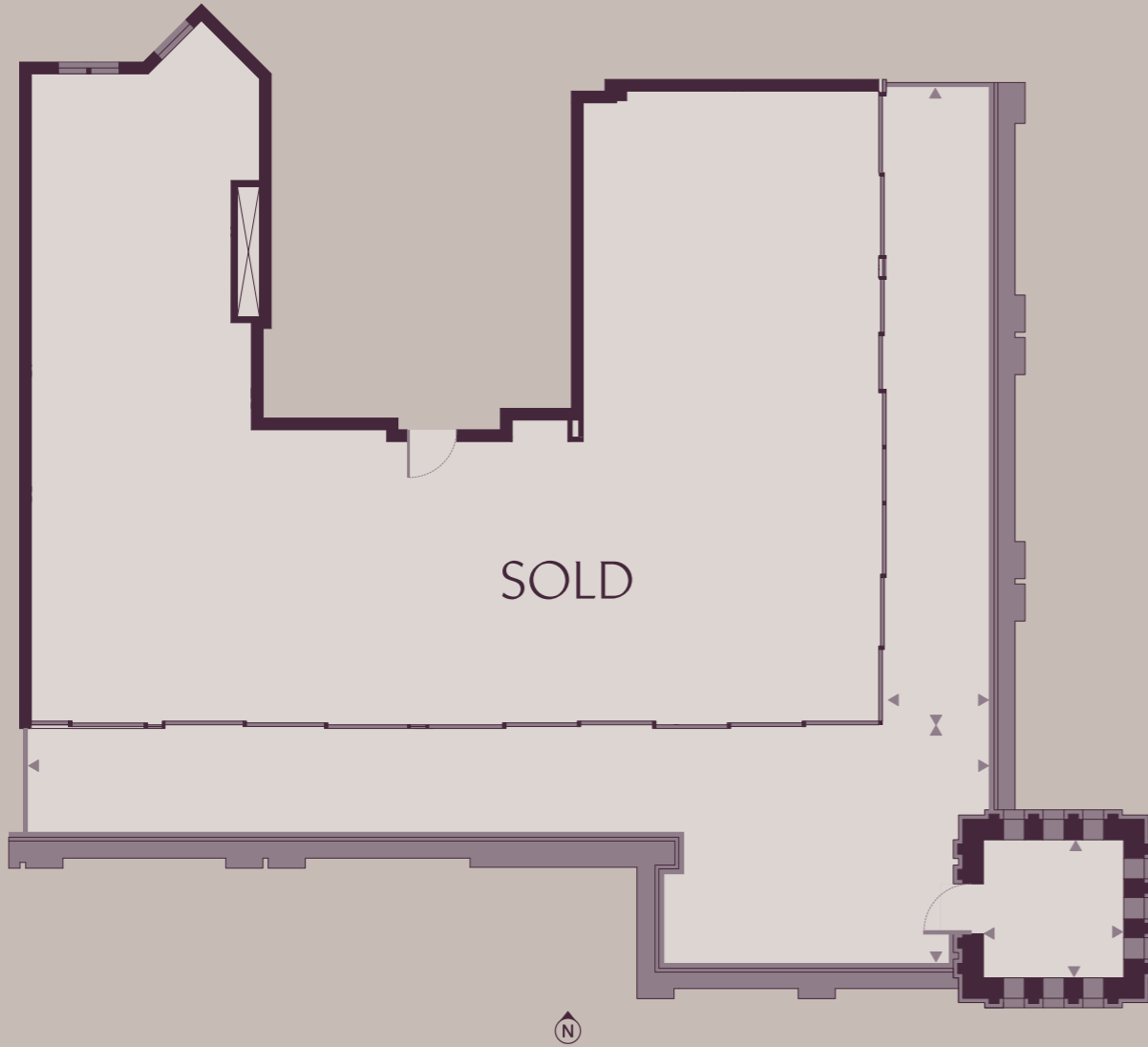
Floor 5 — P-5.5

Rooftop Garden



	m	ft
Garden	22.92 × 12.82	75.20 × 42.06
<b>Total</b>	<b>300.02 sqm</b>	<b>3229.39 sqft</b>

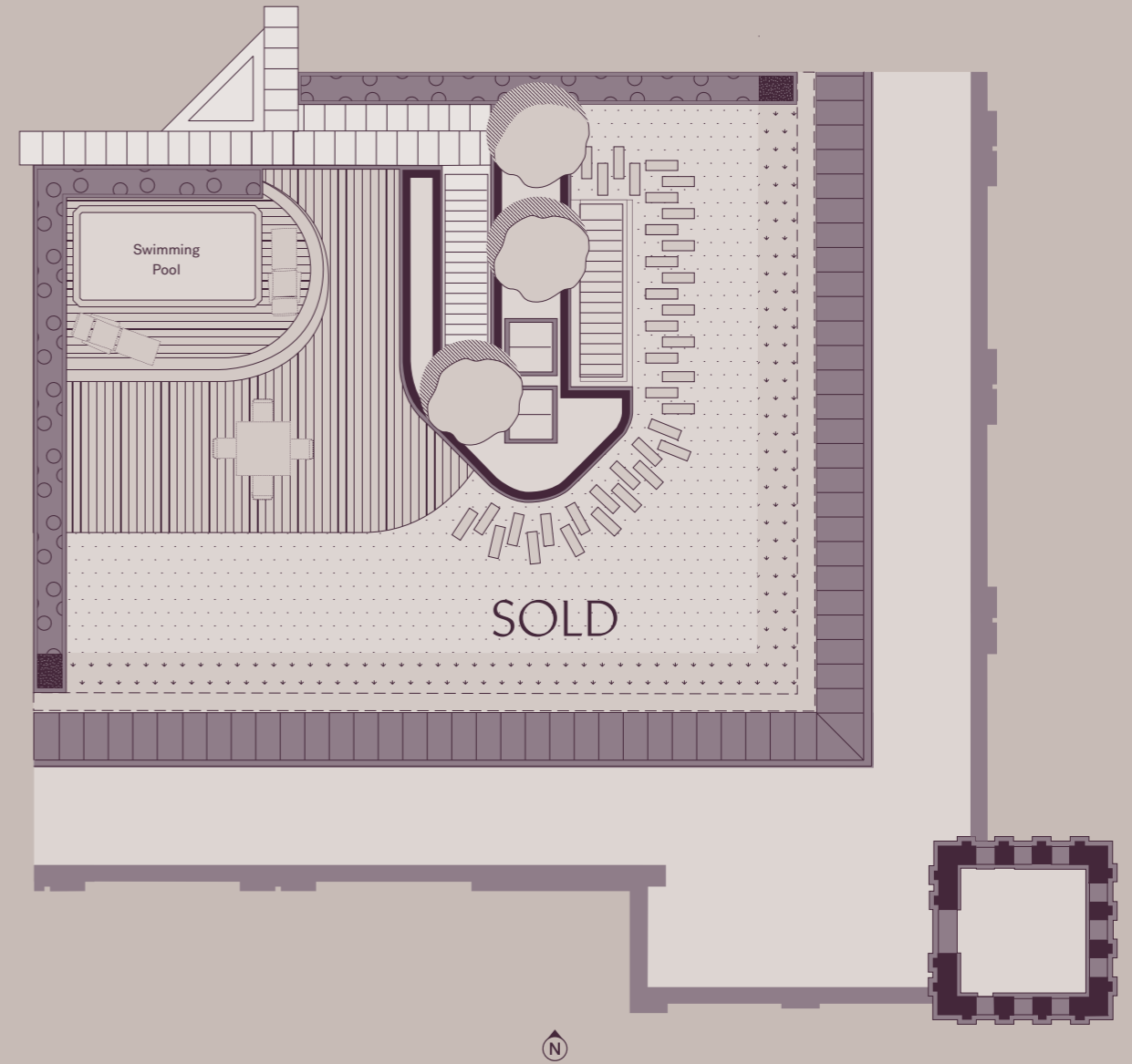
PENTHOUSE 506  
First Floor



	m	ft
Turret	3.07 × 3.03	10.07 × 9.94
Terrace	22.27 × 5.42	73.06 × 17.78
	2.45 × 14.77	8.04 × 48.46

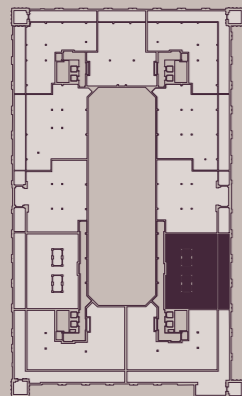
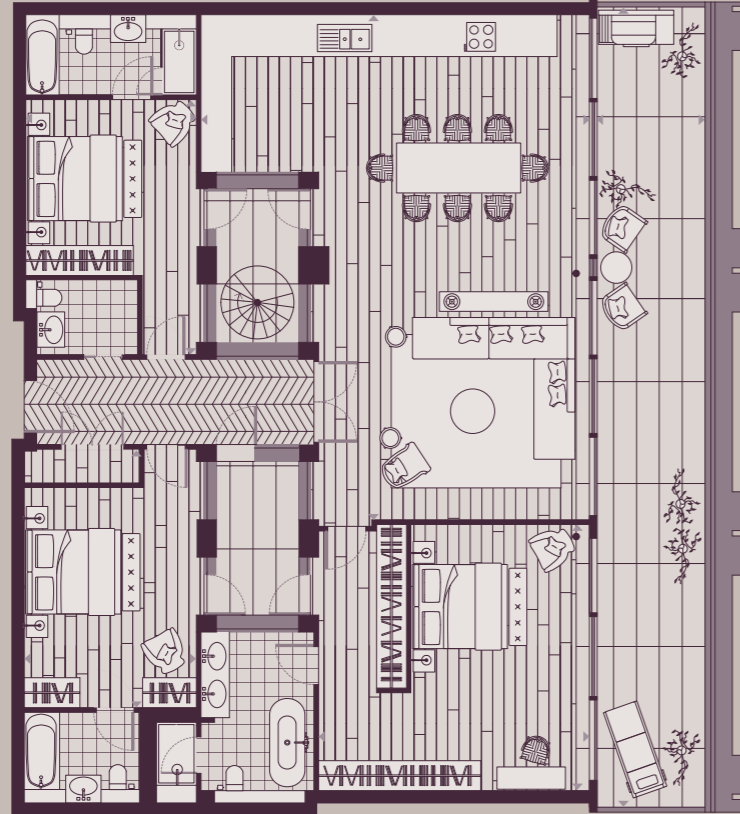
Floor 5 — P-5.6

Rooftop Garden



	m	ft
Garden	17.33 × 12.82	56.86 × 42.06
<b>Total</b>	<b>190.71 sqm</b>	<b>2052.79 sqft</b>

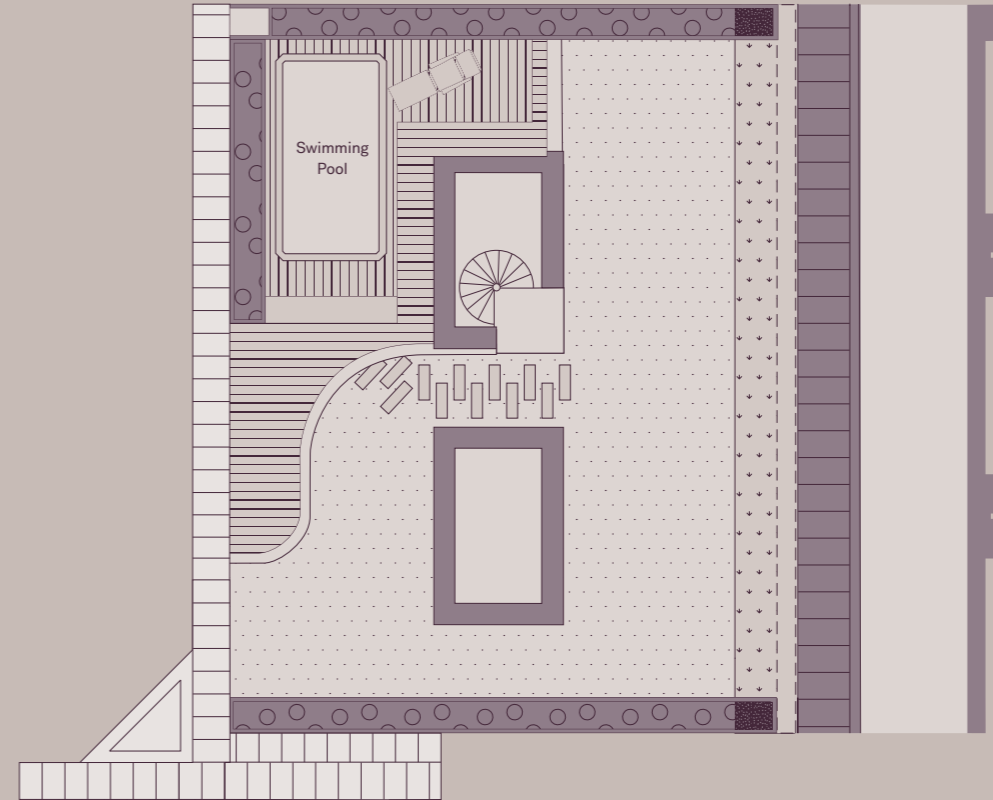
PENTHOUSE 508  
First Floor



	m	ft
Living / Dining (inc. kitchen)	8.56 × 11.26	28.08 × 36.94
Bedroom 1	5.98 × 5.84	19.62 × 19.16
Bedroom 2	3.78 × 5.70	12.40 × 18.70
Bedroom 3	3.78 × 5.38	12.40 × 17.65
<b>Total</b>	<b>213.30 sqm</b>	<b>2295.94 sqft</b>
Terrace	2.43 × 17.22	7.97 × 56.50

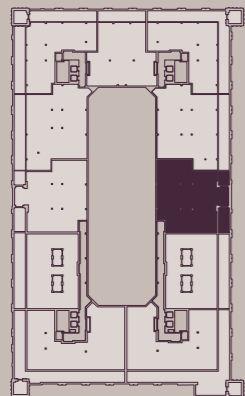
Floor 5 — P-5.8

Rooftop Garden



	m	ft
Garden	15.56 × 12.20	51.05 × 40.03
<b>Total</b>	<b>188.80 sqm</b>	<b>2032.23 sqft</b>

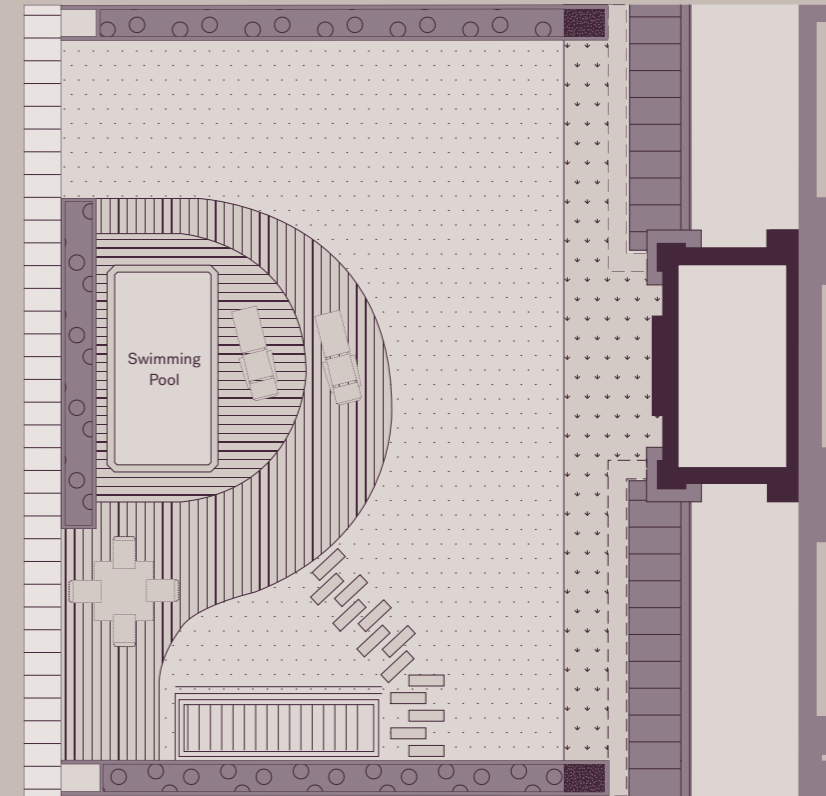
PENTHOUSE 509  
First Floor



	m	ft
Living / Dining (inc. kitchen)	8.48 × 14.55	27.82 × 47.74
Bedroom 1	6.73 × 4.87	22.08 × 15.98
Bedroom 2	6.73 × 4.78	22.08 × 15.68
Bedroom 3	6.73 × 3.28	22.08 × 10.76
<b>Total</b>	<b>234.30 sqm</b>	<b>2521.98 sqft</b>
Terrace	2.42 × 3.35	7.94 × 10.99
	2.43 × 6.13	7.97 × 20.11

Floor 5 — P-5.9

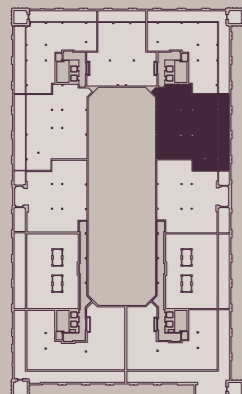
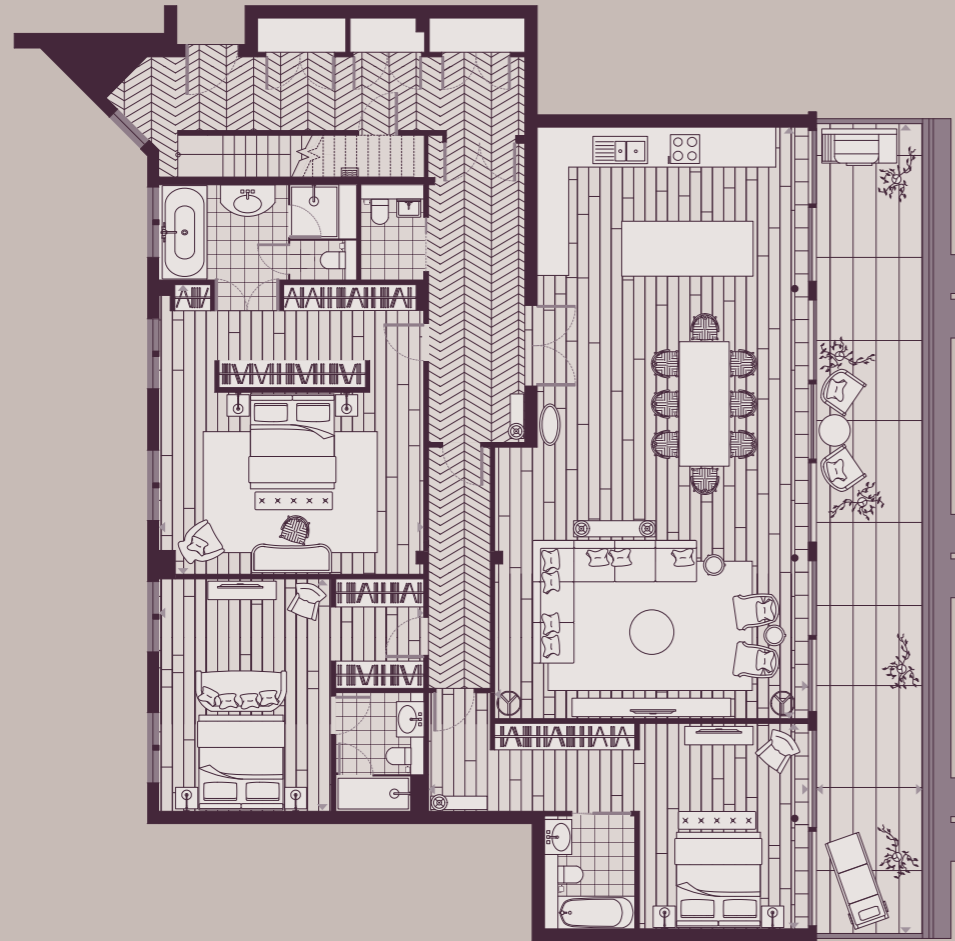
Rooftop Garden



	m	ft
Garden	16.56 × 12.20	54.33 × 40.03
<b>Total</b>	<b>206.31 sqm</b>	<b>2220.70 sqft</b>

PENTHOUSE 510

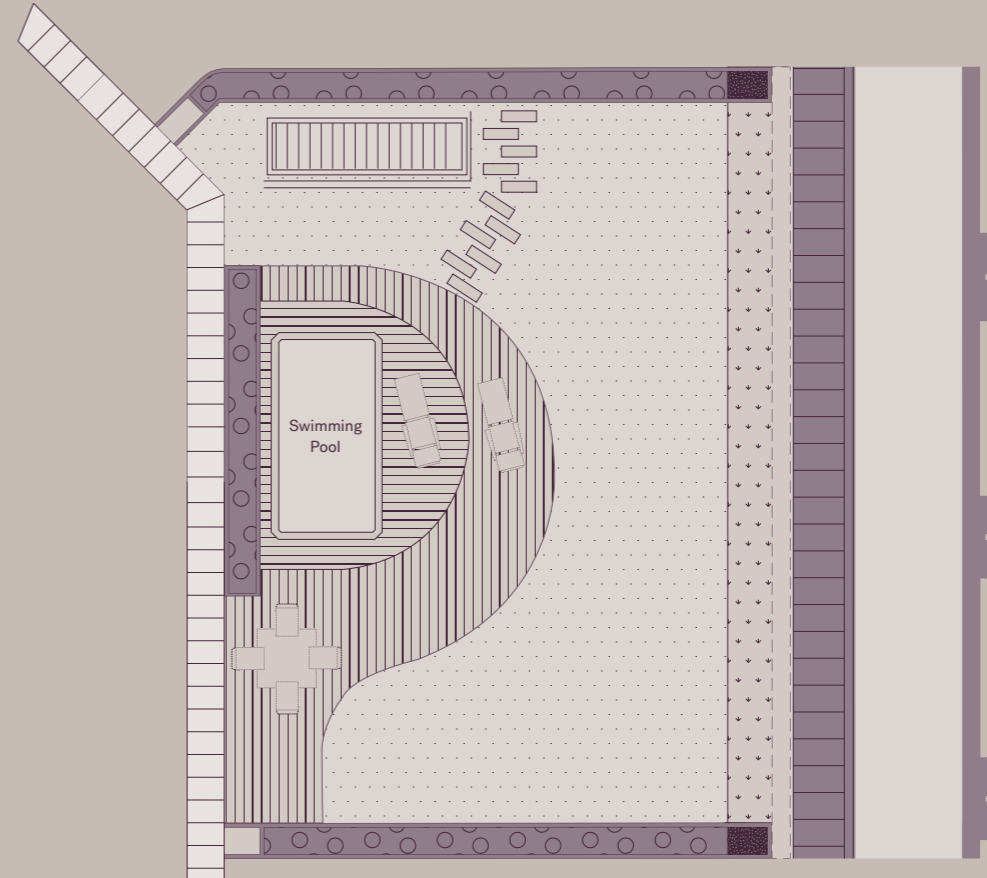
First Floor



	m	ft
Living / Dining (inc. kitchen)	6.91 × 13.05	22.67 × 42.81
Bedroom 1	5.82 × 6.36	19.09 × 20.87
Bedroom 2	5.82 × 5.03	19.09 × 16.50
Bedroom 3	8.35 × 4.57	27.40 × 14.99
<b>Total</b>	<b>248.90 sqm</b>	<b>2679.14 sqft</b>
Terrace	2.42 × 17.85	7.94 × 58.56

Floor 5 — P-5.10

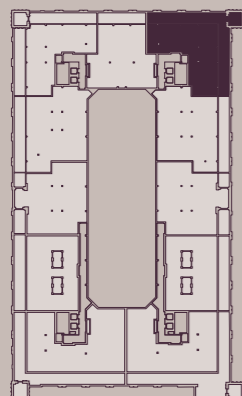
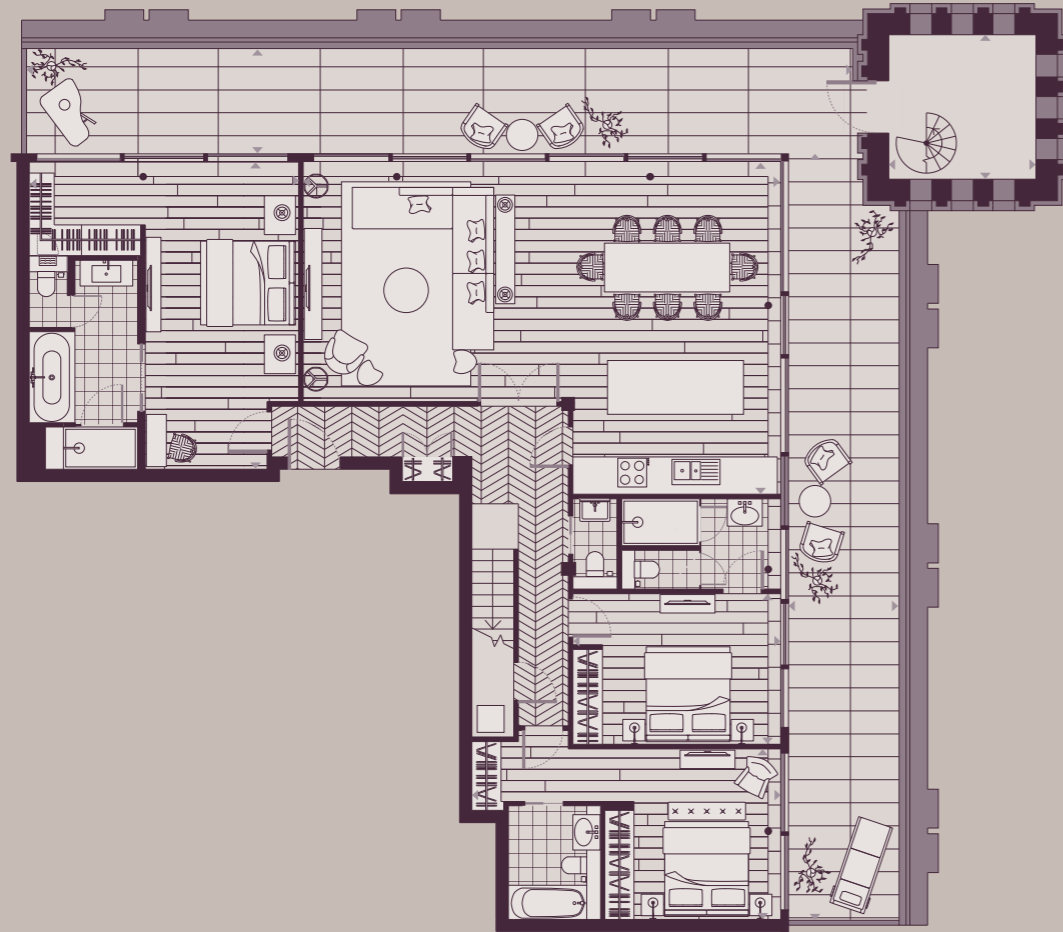
Rooftop Garden



	m	ft
Garden	16.97 × 12.20	55.68 × 40.03
<b>Total</b>	<b>207.57 sqm</b>	<b>2234.26 sqft</b>

PENTHOUSE 511

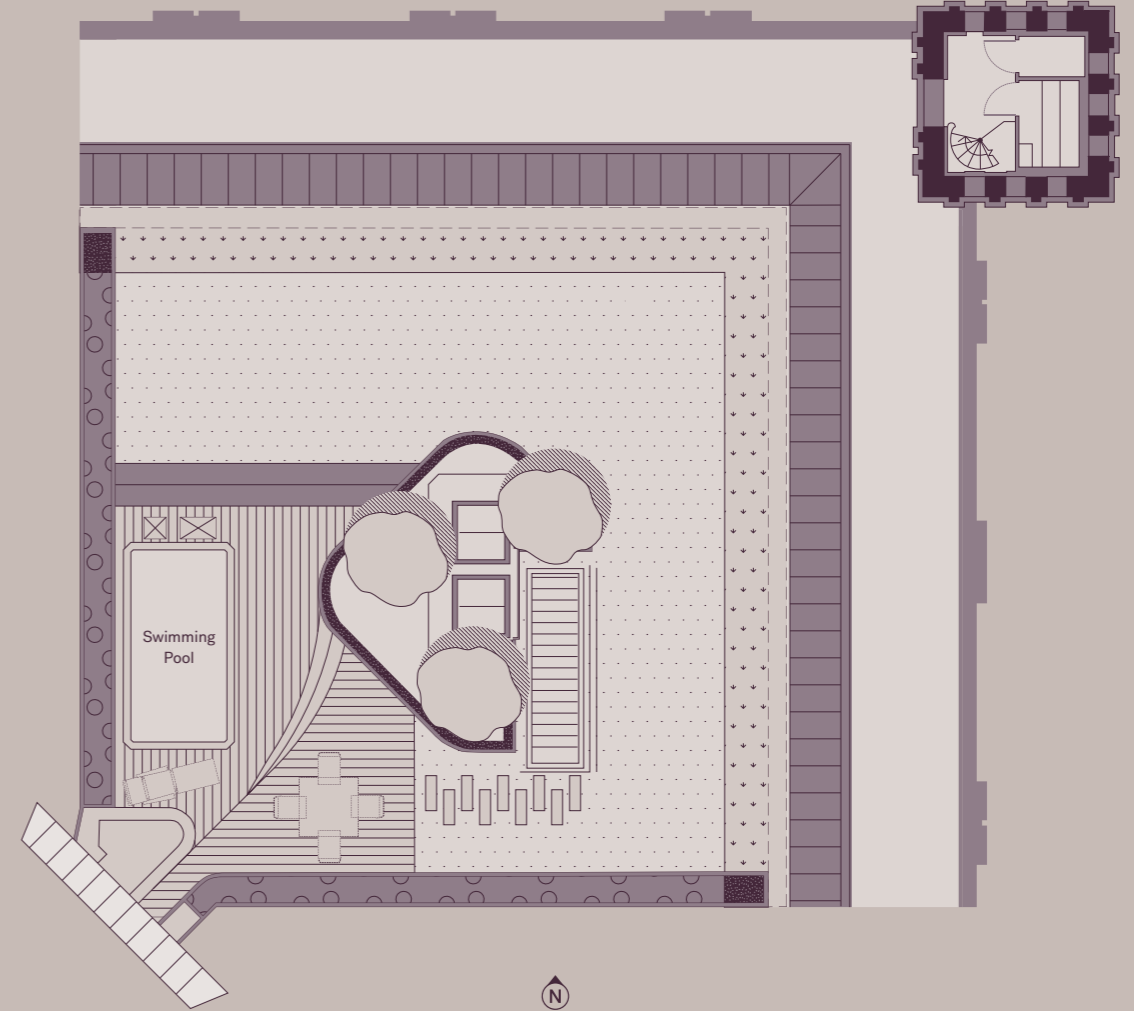
First Floor



	m	ft
Living / Dining (inc. kitchen)	10.60 × 7.37	34.78 × 24.18
Bedroom 1	5.93 × 6.73	19.46 × 22.08
Bedroom 2	4.59 × 3.31	15.06 × 10.86
Bedroom 3	3.76 × 6.80	12.34 × 22.31
Turret	3.03 × 3.04	9.94 × 9.97
<b>Total</b>	<b>196.10 sqm</b>	<b>2110.80 sqft</b>
Terrace	2.44 × 19.93	8.01 × 65.39
	18.49 × 2.41	60.66 × 7.91

Floor 5 — P-5.11

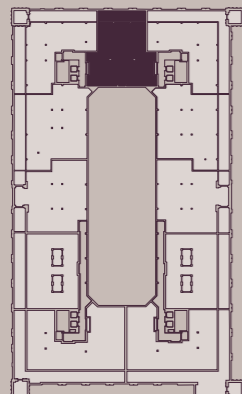
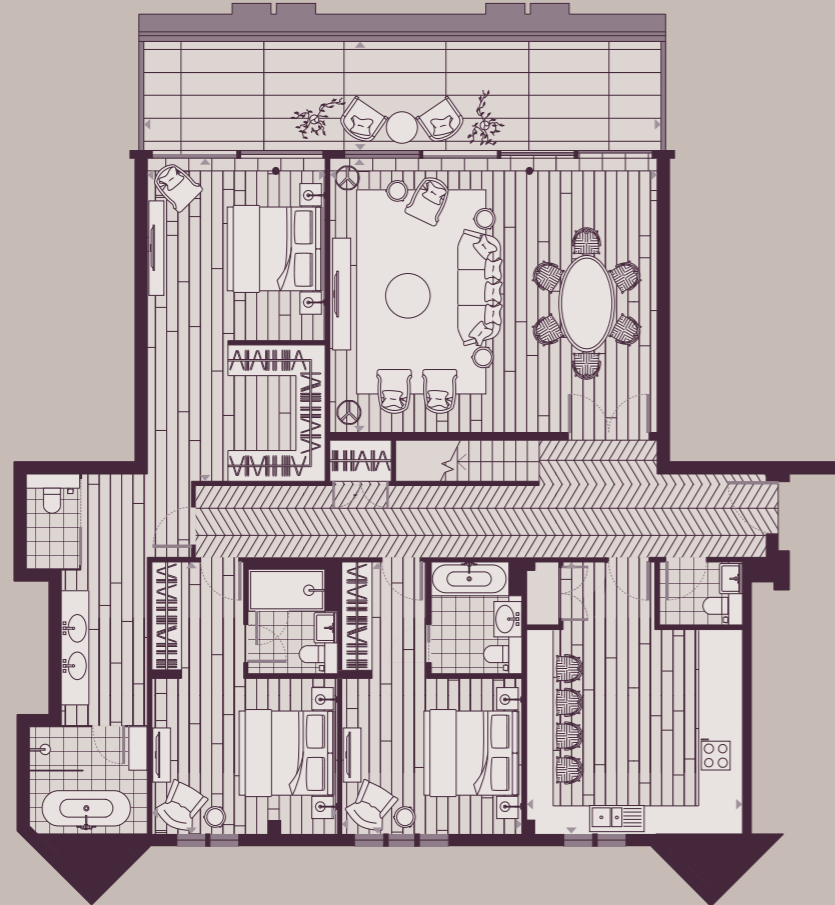
Rooftop Garden



	m	ft
Garden	13.98 × 14.35	45.87 × 47.08
<b>Total</b>	<b>200.30 sqm</b>	<b>2156.01 sqft</b>

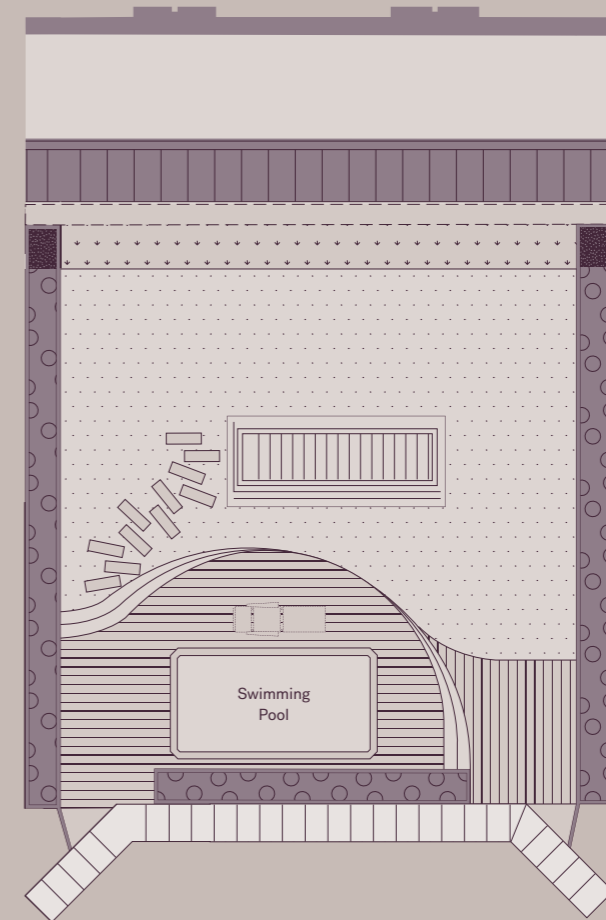
PENTHOUSE 512  
First Floor

Rooftop Garden



	m	ft
Living / Dining	7.21 × 6.05	23.65 × 19.85
Kitchen	4.65 × 6.03	15.26 × 19.78
Bedroom 1	3.93 × 7.13	12.89 × 23.39
Bedroom 2	4.01 × 6.03	13.16 × 19.78
Bedroom 3	4.06 × 6.03	13.32 × 19.78
<b>Total</b>	<b>202.80 sqm</b>	<b>2182.92 sqft</b>
Terrace	11.39 × 2.41	37.37 × 7.91

Floor 5 — P-5.12



	m	ft
Garden	12.82 × 11.55	42.06 × 37.89
<b>Total</b>	<b>148.73 sqm</b>	<b>1600.92 sqft</b>

## I'll Meet You In the Square

Contact us to experience Islington Square for yourself. We'd love to introduce you to everything it can offer and to help you get the very best from this exciting development.





## Developers



Sager Group



Cain International

## Project Team



CZWG Architects LLP



Amos & Amos



Argent



Wish London



Capita



Bruce Shaw



John Noad



GVA



Metropolis



Mbok

## Residential Agents



Savills  
t: +44 (0)20 7409 8756  
e: newhomes@savills.com



Knight Frank  
t: +44 (0)20 7861 5499  
e: islingtonsquare@knightfrank.com



Beauchamp Estates  
t: +44 (0)20 7499 7722  
e: islingtonsquare@beauchamp.co.uk

The Agents and their clients give notice that:

They are not authorised to make or give any representations or warranties in relation to the property either here or elsewhere, either on their own behalf or on behalf of their client or otherwise. They assume no responsibility for any statement that may be made in these particulars. These particulars do not form part of any offer or contract and must not be relied upon as statements or representations of fact.

Any areas, measurements or distances are approximate. The text, images and plans are for guidance only and are not necessarily comprehensive. It should not be assumed that the property has all necessary planning, building regulation or other consents and Savills have not tested any services, equipment or facilities. Purchasers must satisfy themselves by inspection or otherwise.

These particulars were prepared from preliminary plans and specifications before the completion of the properties. These particulars, together with any images that they contain, are intended only as a guide. They may have been changed during construction and final finishes could vary. Prospective purchasers should not rely on this information but must get their solicitor to check the plans and specification attached to their contract.

Design: Campbell Hay    CGI Visualisations: Recent Spaces, Pixelflakes, Wish London and Maciej Maciejowski

