

THE  
STAGE.  
EC2

SHOREDITCH

AMENITIES & LEISURE



IN JOINT VENTURE







The Stage will provide its residents with an exceptional array of exclusive lifestyle and leisure amenities together with executive business facilities and world class concierge incorporating bespoke home management.

### LEVEL 32

4,355 sq.ft. sky lounge

Landscaped roof terrace

### GROUND LEVEL

Double height reception foyer

Concierge and services desk

### LOWER LEVEL 1

3 conference suites

18 seat cinema

15 seat cinema

### LOWER LEVEL 2

1,970 sq.ft. gymnasium

Shower & locker facilities

Golf simulation suite

2,800 sq.ft. bowling alley with  
juice bar & lounge area

Adjoining games lounge



Rhodium have created a niche to service the ultra-luxury requirements of London's most discerning residents – and will provide an unparalleled suite of bespoke, prestigious services at The Stage.

## R H O D I U M

RESIDENCE MANAGEMENT

The Capital's most highly acclaimed home management and deluxe lifestyle provider will ensure residents a dedicated service 24 hours a day.

“Rhodium is a luxury residence management company, providing bespoke property and lifestyle management services to London's super-prime homes and prestigious residential developments.



Entrance foyer & concierge reception

# Split level recreational and executive space for residents at The Stage

Lower level 2 incorporating:

- 1 BOWLING LANES
- 2 GAMES LOUNGE
- 3 JUICE BAR
- 4 GYMNASIUM
- 5 GOLF SIMULATOR
- 6 SHOWER & LOCKER FACILITIES



Lower level 2

Lower level 1, incorporating:

- 7 TWO SCREENING ROOMS
- 8 RECEPTION/BUSINESS LOUNGE
- 9 THREE CONFERENCE SUITES



Lower level 1

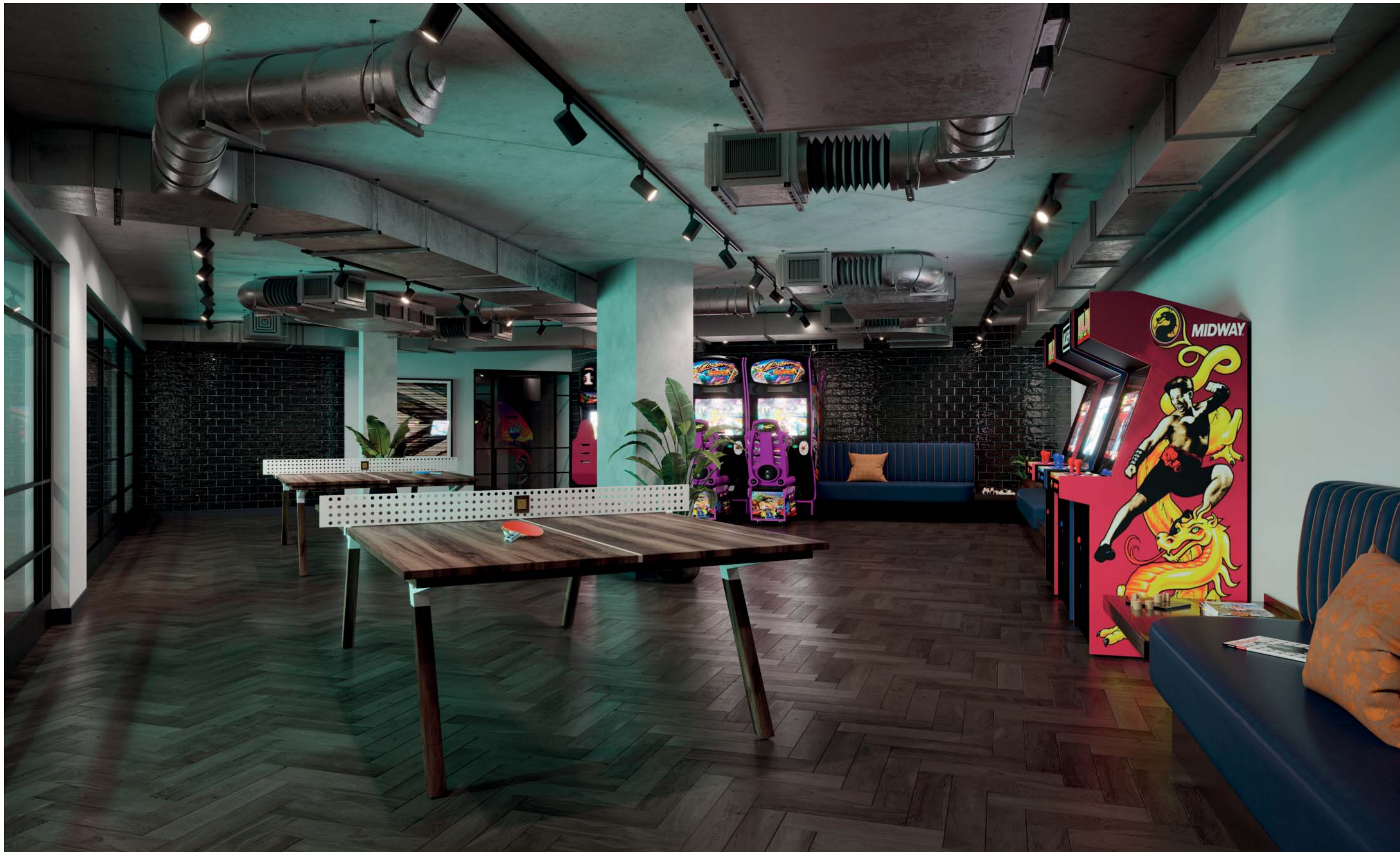




## Bowling Alley

Complete with games tables, juice bar & lounge area





## Games Lounge

Over 1,150 square feet of fully equipped lounge and games space which will also be available for residents' private functions.

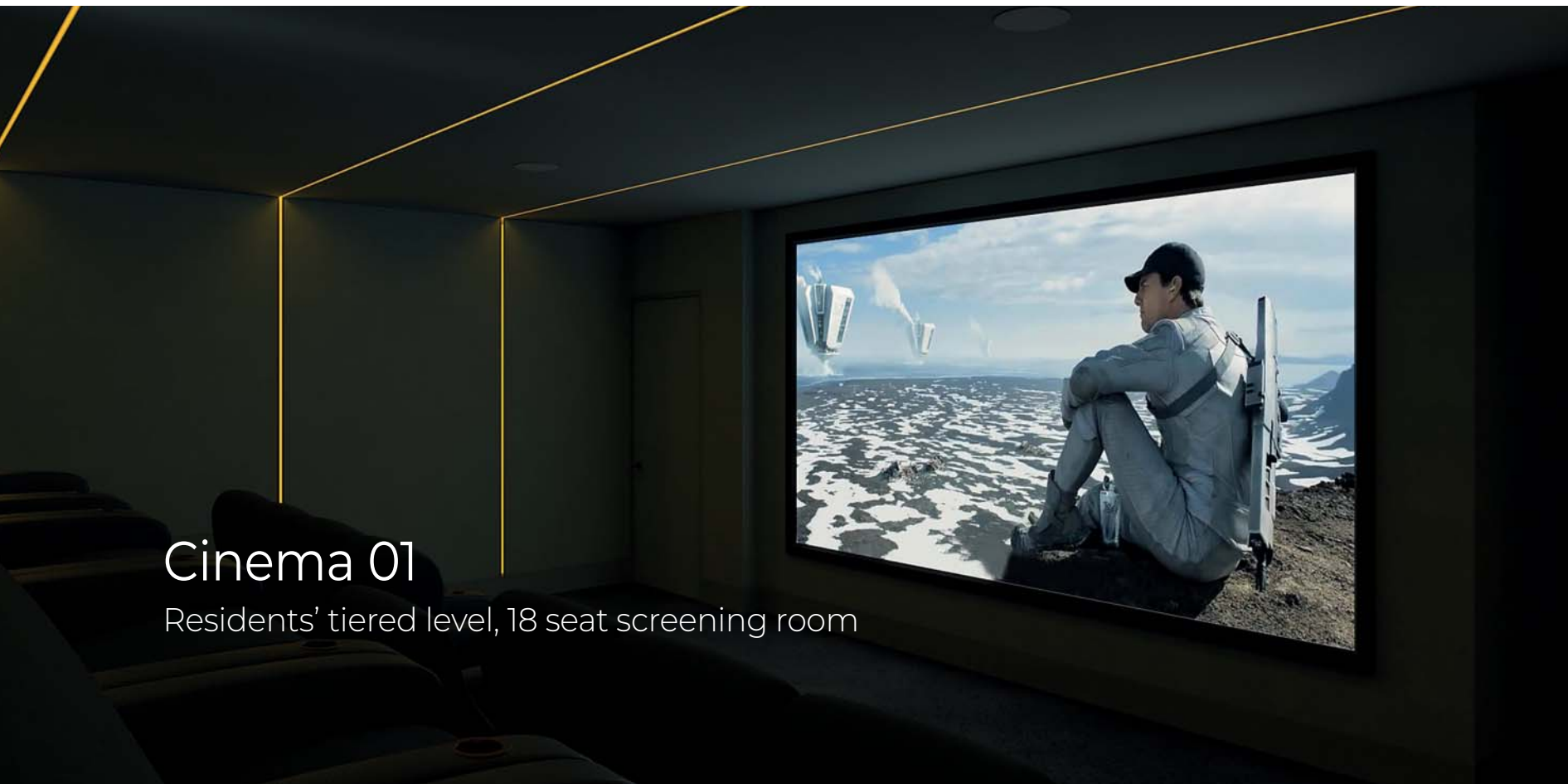




## Fitness Suite

Residents' private gym featuring Technogym equipment





## Cinema 01

Residents' tiered level, 18 seat screening room



## Cinema 02

The 15 seat screening room also available for residents' private functions







## Golf Simulator

Residents' private indoor golf simulation suite featuring state of the art audio visual technology.





## Conference Facilities

The Stage will provide three conference suites together with a reception/business lounge and kitchenette.



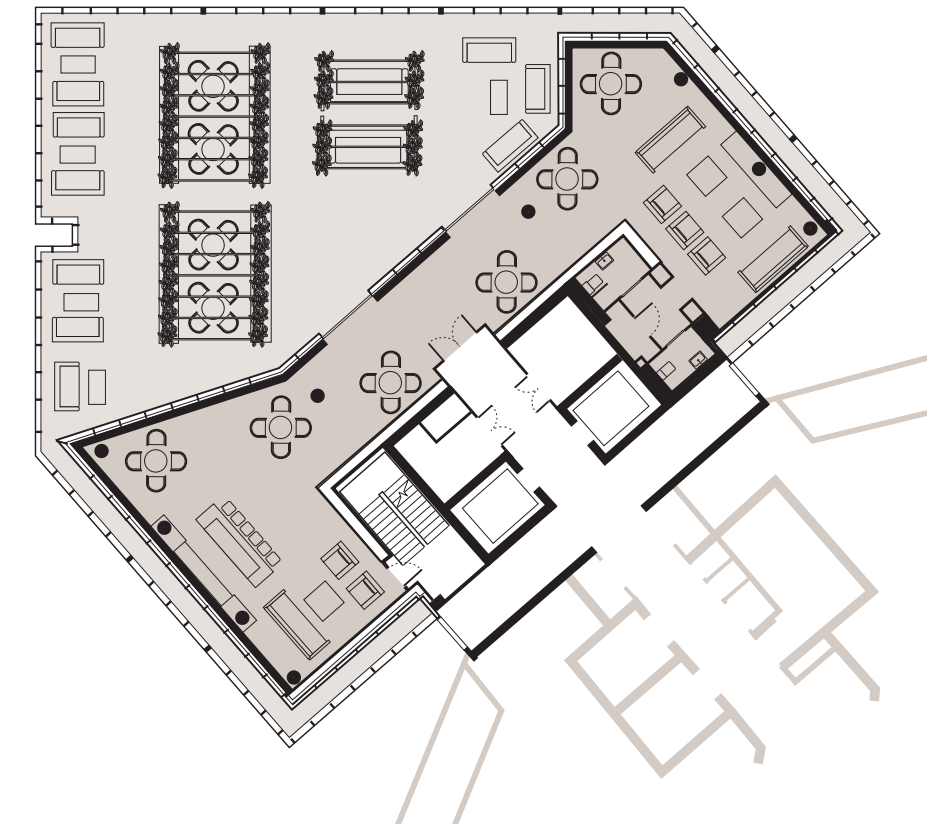


## Sky Lounge

The Stage will offer residents exclusive access to this fabulous 32nd level lounge and entertaining space complete with juice bar & extensive outdoor terrace.







## Level 32

### Sky Terrace

This magnificent roof top oasis will not only provide a stunning space to meet and chill but will offer breathtaking views across the Capital's skyline.





Sky terrace with ornate pergolas and uplit planting.



The Stage is themed by the discovery of the remains of Shakespeare's Curtain Theatre dating back to 1577

Images of site excavation courtesy of Museum of London Archaeology.



The unique historical context of The Stage heralds it as the first world heritage site in East London.

The remains were discovered in 2011 lying three metres below the surface of the development.

Archaeologists now believe they could be the best preserved examples of the Elizabethan theatre in the UK.

We know Shakespeare wrote at least 37 plays – two of his greatest, Romeo & Juliet and Henry V, were premiered at the Curtain Theatre.

After 7 years of painstaking work, Shakespeare's Playhouse will once again come alive – to provide London's greatest legacy to the world's greatest playwright.



**THE  
STAGE.  
EC2**  
SHOREDITCH





## Heritage & Visitor Centre

The preserved remains of the Curtain Theatre will be showcased in a purpose built Heritage & Visitor Centre located in the developments central piazza.



THE  
STAGE.  
EC2  
SHOREDITCH

THE STAGE  
SALES & MARKETING SUITE

SHOW APARTMENTS OPEN 7 DAYS FOR VIEWING BY APPOINTMENT

The Viaduct, Fairchild Place, Shoreditch, London EC2A 3EN

020 3770 2154

thestageshoreditch.com



These particulars are compiled with care to give a fair description but we cannot guarantee their accuracy and they do not constitute an offer or contract. Galliard Homes reserve the right to alter any specifications and floor plan layouts without prior notice. All journey times stated are approximate. Source tfl.gov.uk. Walking times taken from google.com. Exterior images of The Stage are computer generated and deemed to be accurate at time of going to print. Potential purchasers should satisfy themselves as to the actual view any apartment will provide. The health and leisure facilities shown in this brochure may be subject to change by any operator or third party undertaking the management branding of the facility space. The Stage is a preferred marketing name only.

V1 March 2022



