

TIMBER YARD  
BIRMINGHAM





# TIMBER YARD

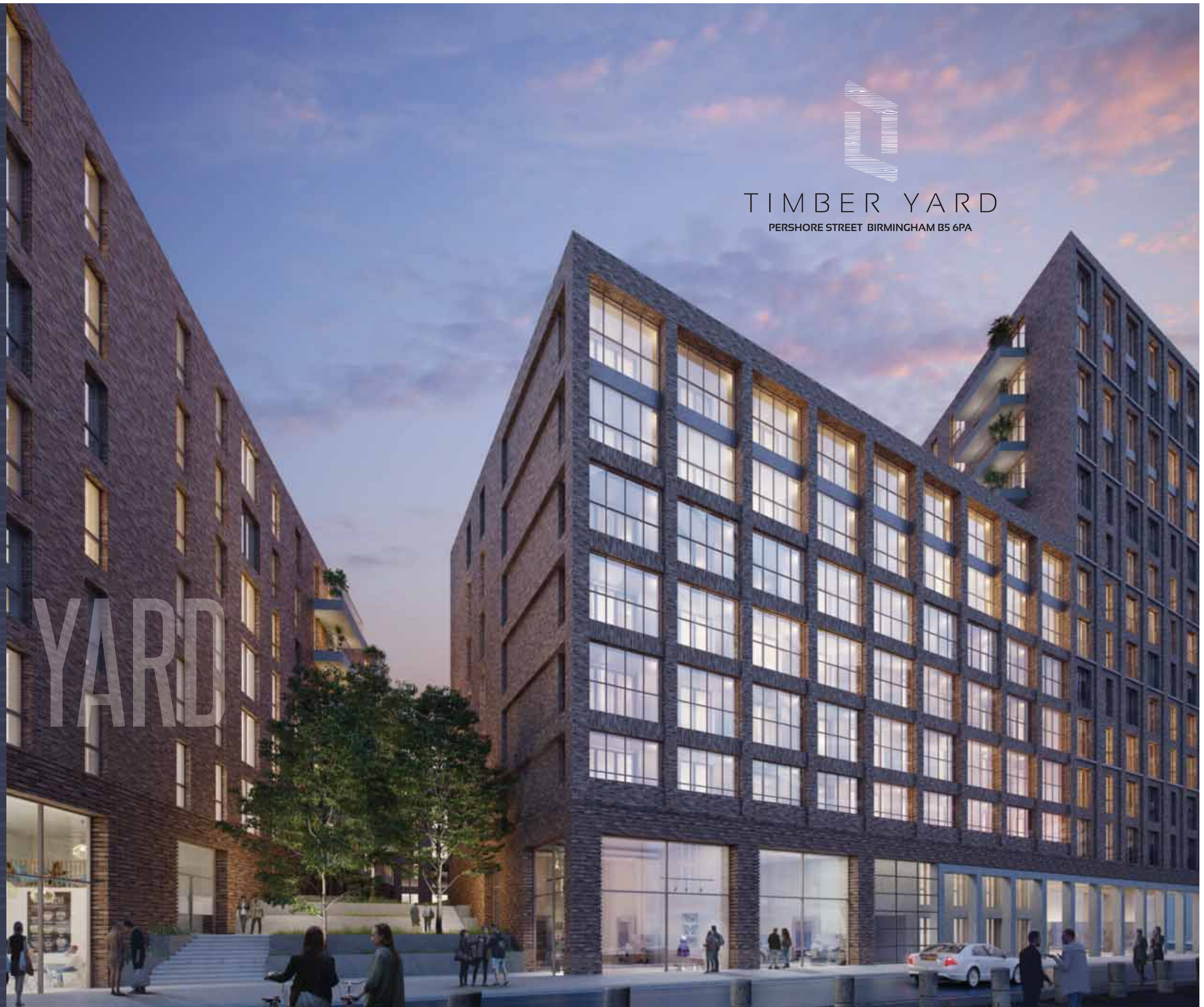
PERSHORE STREET BIRMINGHAM B5 6PA

# TIMBER YARD

Landmark regeneration in the  
UK's second capital city



IN PARTNERSHIP WITH  
APSLEY HOUSE  
CAPITAL PLC







## DELIVERING A WORLD CLASS DESTINATION

ENTREPRENEURIAL GROWTH

UNPRECEDENTED INWARD INVESTMENT



Birmingham now generates a £120 billion regional economy.



It is Britain's most entrepreneurial business hotspot.



The city attracted 41.8 million visitors in 2017.



The visitor spend grew to £7.1 billion - up 9% year on year.



Employment is forecast to rise by 38,000 within the next decade with new flagship companies including Linklaters, HS2 and KPMG.



The relocation of major employers has seen office take up in excess of one million sqft in 2017 - 51% above the 10 year average.

# THE FACTS

A MAJOR ECONOMY

EXPANDING INFRASTRUCTURE

SUSTAINED PROPERTY GROWTH

DYNAMIC CONNECTIVITY

A SHOWCASE LOCATION



Over 12,000 start-up businesses were successfully established during 2017.



HSBC, Deutsche Bank, Barclays and HM Revenue and Customs are collectively relocating and increasing staff numbers to around 8000 personnel by 2020.



Birmingham will be the host city for the 2022 commonwealth games with the potential for up to one million additional visitors.

Source of statistics: Savills Research 2018.

**“The West Midlands is forecast to be the fastest growing region leading up to 2020, with growth underpinned by strong performance in the real estate and professional service sectors.**”





EXPANDING  
INFRASTRUCTURE



SUSTAINED  
PROPERTY GROWTH



DYNAMIC  
CONNECTIVITY



A SHOWCASE  
LOCATION

# KEY DRIVERS

AMBITION INNOVATION ENERGY

4



5

- £56 billion HS2 development programme.
- £1.3 billion expansion of Midlands Metro (light rail line).
- £600 million upgrade of New Street Station.
- £200 million expansion of Birmingham Airport.
- Birmingham Airport will also become the UK's first airport with high speed rail connectivity direct to the City Centre.
- Birmingham Smithfield £500 million regeneration with new Metro tram line and centrepiece market square proposed for development adjacent to Timber Yard.
- Birmingham has seen 8.6% growth in house prices over the last year.
- The city has experienced over 30% growth in property values over the last five years.
- Demand for new homes is fuelled by a current annual delivery shortfall of some 2,300 homes.
- Birmingham's population is forecast to increase by 13.7% by 2031 - with young professionals (age 25-34) increasing by 5000 in the next decade alone.
- 17% growth in the rental market forecast over the next 3 years.
- Two new HS2 stations will be operational by 2026.
- Curzon Street HS2 hub is set to become the gateway to Europe's high speed rail network.
- Birmingham New Street is now the busiest rail interchange outside of London.
- Birmingham is one of the fastest growing airports in the UK with around 30 different airlines in operation.
- The city has four major motorways all interconnecting within close proximity of its centre.
- 90% of the UK population are within a four hour drive of the West Midlands.
- Birmingham is now voted among the top 10 cities worldwide.
- It has the youngest city population in the UK and Europe.
- There are 3 universities and over 450 schools in the city.
- Birmingham has 14 square miles of parkland and public open space - more than any other European city.
- Birmingham has more Michelin-starred restaurants than any other UK city outside of London.
- Birmingham Hippodrome is the busiest and most popular theatre in the UK.
- The city has 56 kilometres of waterways - a canal network larger than that of Venice.

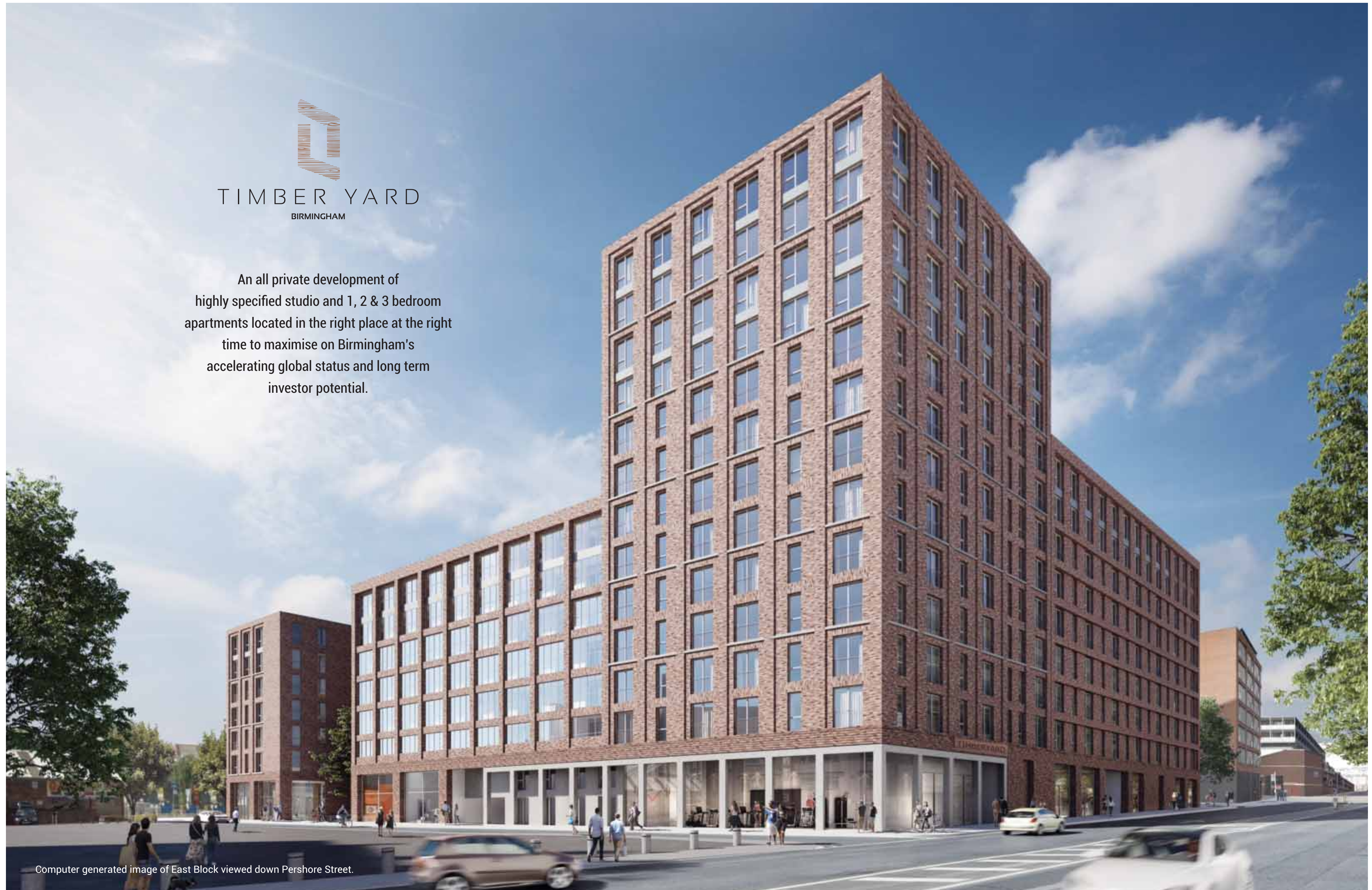




# TIMBER YARD

BIRMINGHAM

An all private development of highly specified studio and 1, 2 & 3 bedroom apartments located in the right place at the right time to maximise on Birmingham's accelerating global status and long term investor potential.



Computer generated image of East Block viewed down Pershore Street.





SITE OF PROPOSED  
NEW £500 MILLION  
BIRMINGHAM SMITHFIELD  
REGENERATION SHOWCASE

  
TIMBER  
YARD





### Mainline Rail

Birmingham is currently served by the three main rail stations, New Street, Moor Street and Snow Hill - all will be within 20 minutes walk of Timber Yard.

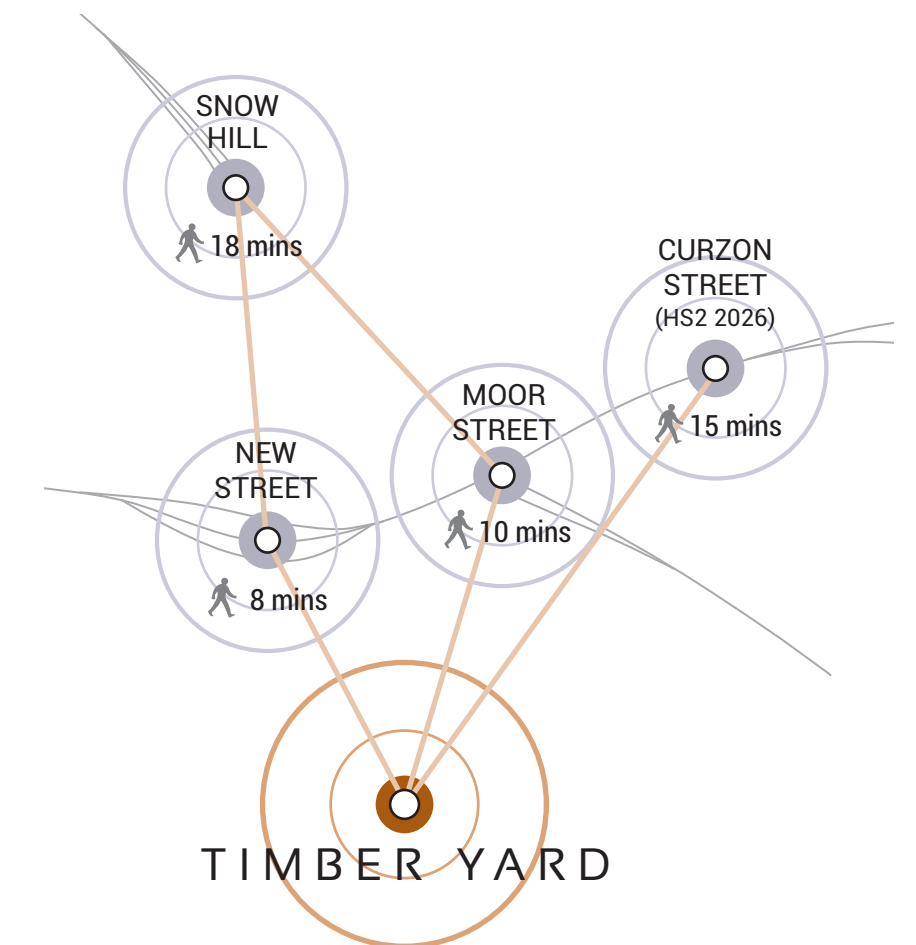
New Street, the nearest, is the national hub for cross country routing and a major destination for Virgin train services from London Euston, Glasgow Central and Edinburgh Waverley. Grand Central, one of the city's flagship retail centres is located immediately above New Street station with fully integrated concourses.



### Motorway Travel

Being centrally located in the UK, Birmingham has a superb network of interconnecting motorways within close proximity of its city centre - with conceptual plans for a further western orbital link stretching from the M5 to the M6 and M54 junction north of Wolverhampton.

Drive times across the Midlands are fast, direct and impressive with typical journey times of 30 minutes to Coventry, 55 minutes to Leicester and London in little over 2 hours.



**FAST TRACK**

BIRMINGHAM INTERNATIONAL	UK MOTORWAY NETWORK	LONDON EUSTON	LEEDS STATION
<b>10</b> MINS	<b>12</b> MINS	<b>49</b> MINS	<b>57</b> MINS

## BIRMINGHAM WILL BE THE CENTRAL HUB OF THE UK'S MAINLINE AND HS2 RAIL NETWORK

IT ALREADY HAS THE SEVENTH BUSIEST AIRPORT IN THE UK  
AND HAS PLANS FOR AN ENTIRE ORBITAL MOTORWAY SYSTEM



### Air Travel

Birmingham Airport is located around 6 miles from the city centre or just 10 minutes by train from Birmingham New Street to Birmingham International rail station.

The airport currently carries around 13 million passengers a year and has goals to achieve 20 million a year with its HS2 link up in 2026. Residents at Timber Yard will have some 300 regional and international destinations on their doorstep served by a host of major airlines.

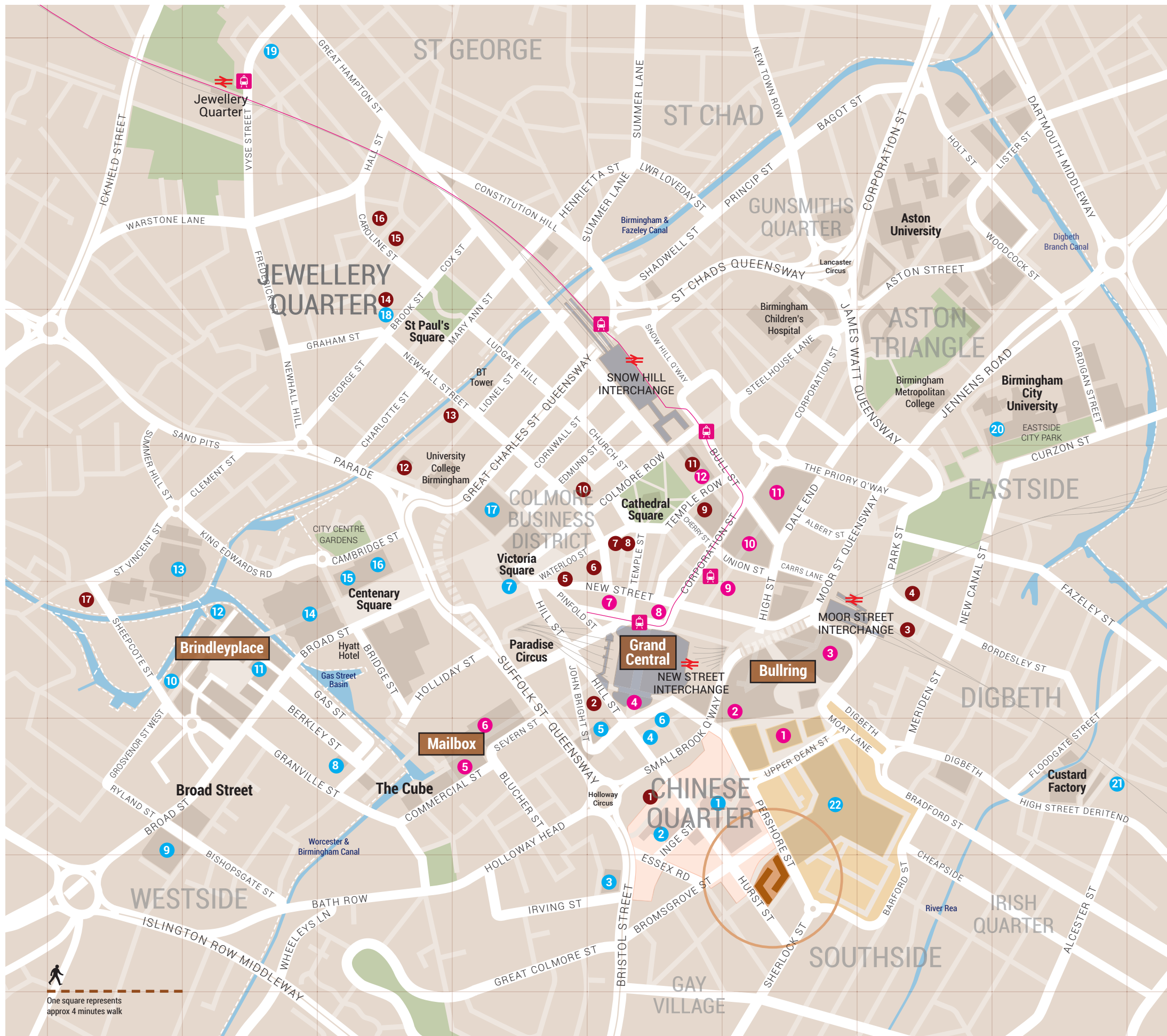


### High Speed Connectivity

When HS2 enters service in 2026, 21st Century travel will become reality - with journey times between London and Birmingham reduced to 49 minutes, two brand new interchanges showcasing a new era in rail connectivity and with it, an accelerating masterplan for economic growth, unparalleled in recent times. When fully implemented, HS2 will halve journey times between Birmingham and Leeds (to 57 minutes) and between Birmingham and Manchester (to 41 minutes). Future plans will then see high speed connections linking Newcastle, Edinburgh and Glasgow.







#### Restaurants & Bars

- 1 Chung Ying Garden
- 2 Bonehead
- 3 Original Patty Men
- 4 The Karczma
- 5 Adam's
- 6 Bodega
- 7 Sabai Sabai
- 8 San Carlo
- 9 The Ivy
- 10 Purnell's
- 11 1847 - Birmingham
- 12 Opheem
- 13 Itihaas
- 14 Lasan
- 15 Otto
- 16 Lucky Duck
- 17 The Distillery

#### Culture

- 1 Arcadian Centre
- 2 Birmingham Hippodrome
- 3 The O2 Academy
- 4 The Electric Cinema
- 5 New Alexandra Theatre
- 6 The Old Rep
- 7 Town Hall
- 8 CBSO Centre
- 9 Five Ways Leisure Complex
- 10 Crescent Theatre
- 11 Ikon Gallery

- 12 National Sea Life Centre
- 13 Barclaycard Arena
- 14 ICC & Symphony Hall
- 15 The REP
- 16 Library of Birmingham
- 17 Birmingham Museum & Art Gallery
- 18 RBSA Gallery
- 19 Museum of the Jewellery Quarter
- 20 Thinktank Birmingham Science Museum
- 21 Rhubarb East Gallery
- 22 Proposed site of Birmingham Smithfield future redevelopment

#### Flagship Shopping

- 1 Bull Ring Markets
- 2 Debenhams
- 3 Selfridges
- 4 John Lewis
- 5 Harvey Nichols
- 6 Paul Smith
- 7 Piccadilly Arcade
- 8 Apple Store
- 9 City Arcade
- 10 Martineau Place
- 11 The Square
- 12 Great Western Arcade



Residents at Timber Yard will be within convenient walking distance of virtually all the city's principal landmarks, attractions, major shopping centres and transport links. Birmingham's newest and most futuristic green space - East Side City Park, lies within 17 minutes stroll of the apartments, providing 14,300 square metres of landscaped parkland, waterways and public realm.

#### Typical walking times will include:

The Arcadian Centre	3 mins
Chinatown	3 mins
Birmingham Hippodrome	3 mins
Bullring and Selfridges's	8 mins
New Street Interchange	8 mins
Grand Central	10 mins
Victoria Square	14 mins
The Mailbox	14 mins
Cathedral Square	15 mins



Birmingham is all about bikes and traffic free cycling routes that take in canal tow paths (about 35 miles), dedicated routes to numerous destinations and simply getting around along many of its cycling lanes. The city now has five 'Brompton Docks' where you can hire a foldable Brompton Bike - great to take on trains and buses, keep as long as you want and even return in another town or city.

#### Typical cycling times will include:

The Custard Factory	4 mins
Eastside City Park	5 mins
The Cube	6 mins
Birmingham City University	6 mins
ICC & Symphony Hall	8 mins
Barclaycard Arena	10 mins
Broad Street	10 mins
Brindleyplace	11 mins
Jewellery Quarter	11 mins



Today, hopping on the Midland Metro light rail line is an efficient, clean and fast way to traverse the city centre, with trams running every 6-8 minutes and every 15 minutes during evenings and Sundays. The line currently covers 13 miles and carried 6.2 million passengers during 2016-17. The entire network is seeing phased extensions and the introduction of battery power - relieving the need for overhead electric lines, and providing Birmingham with another accolade of being first in the UK to do so.



The Alliance has now committed to transforming the Metro system with a £1.3 billion investment and programme to extend the network by a further 20 miles over the next decade.



# THE CITY

## GOING PLACES





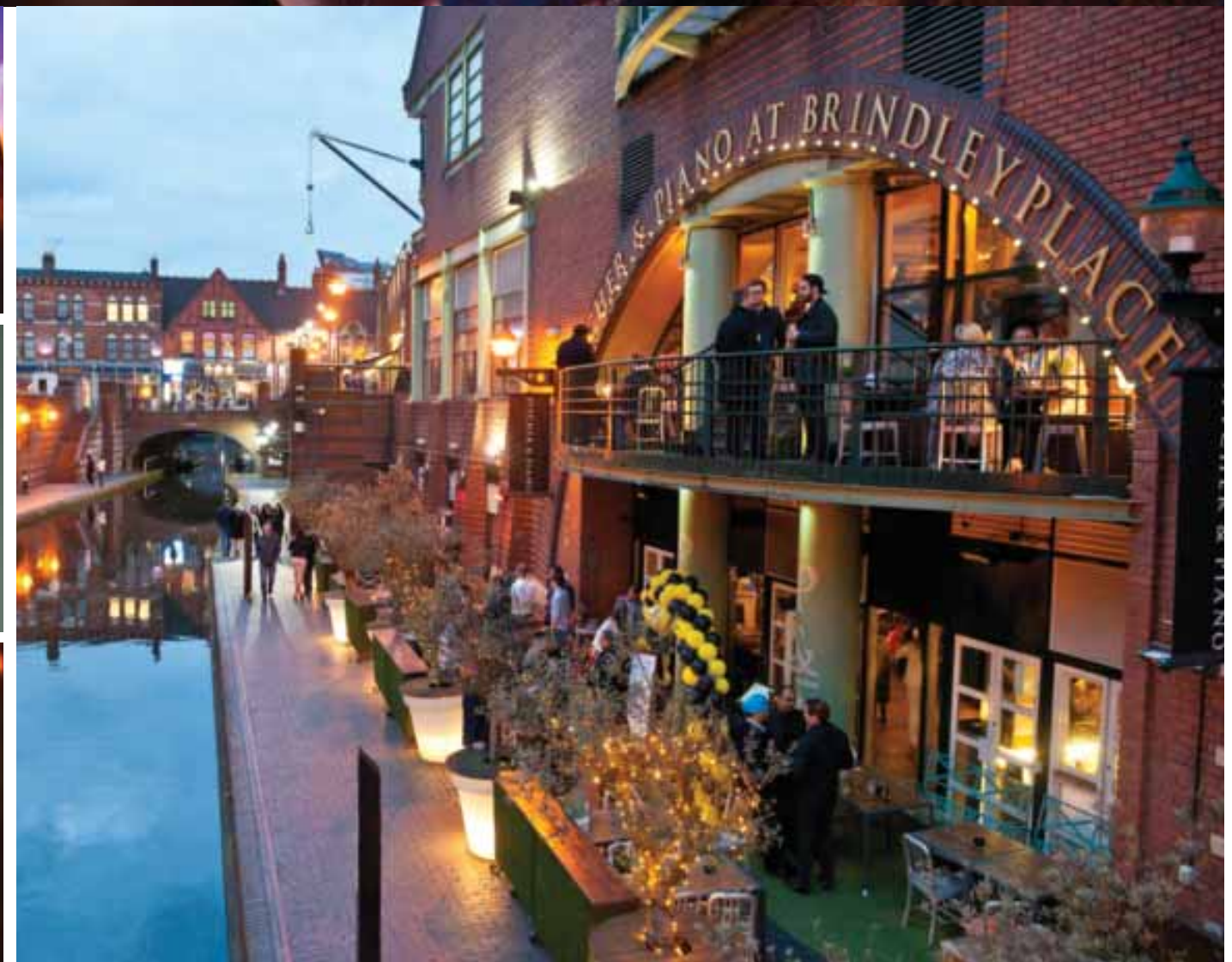


# ON THE TOWN

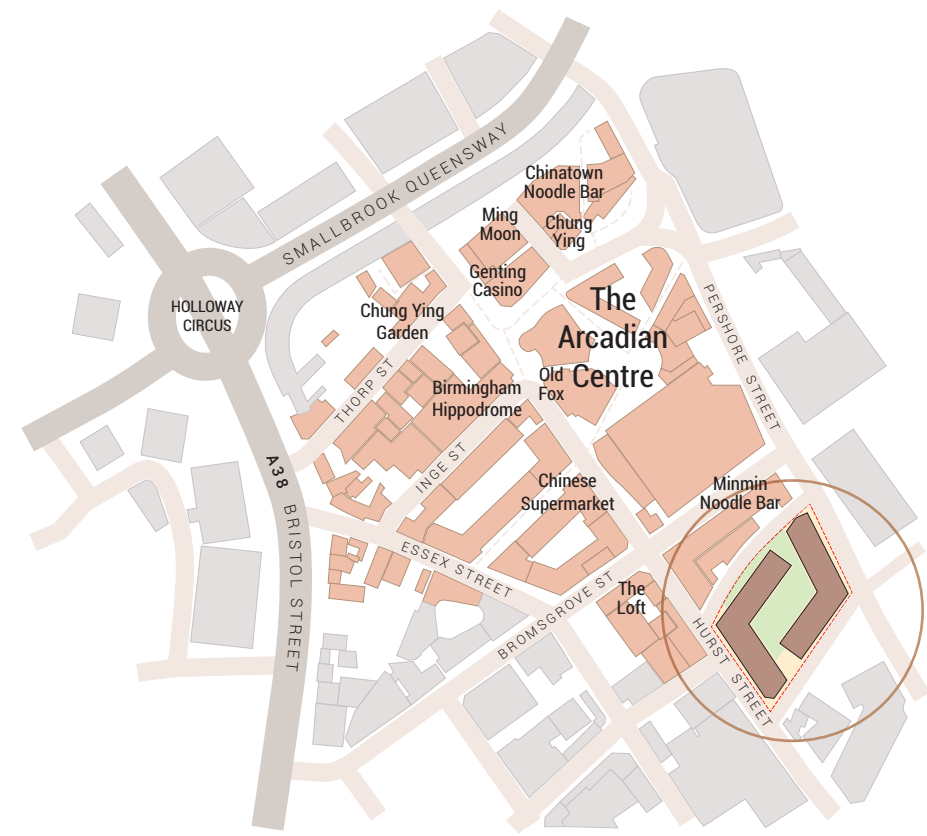


If you're looking for star-filled theatres, the hottest night spots, fabulous cuisine and some of the most fashionable haunts in the UK - you need look no further.

Birmingham has it, lives it, serves it and now delivers a cultural palette comparable to London's West End, a diversity of entertainment to suit all tastes - from the Royal Ballet to its world famous Balti Triangle, from a vibrant arts scene, international film festivals and comedy clubs to the suave champagne and cocktail bars serving first class fizz at the Mailbox or The Cube.







Birmingham's celebrated Chinese Quarter will lie a stone's throw from Timber Yard, offering its residents a diverse gastronomic concentration of fine restaurants, cafés, bars and eateries, together themed by authentic architecture and a landmark seven storey granite pagoda set amid traditional gardens and sculptures.

The Arcadian, one of the city's top entertainment venues, is located in the heart of this vibrant quarter - where relaxed dining seamlessly blends with the very present party atmosphere.

“ Today, Chinatown is one of Birmingham's most vibrant, atmospheric and unique districts being home to a thriving Chinese community amid a bustling array of authentic restaurants, eateries and specialist outlets... **and all around 5 minutes walk of Timber Yard.** ”



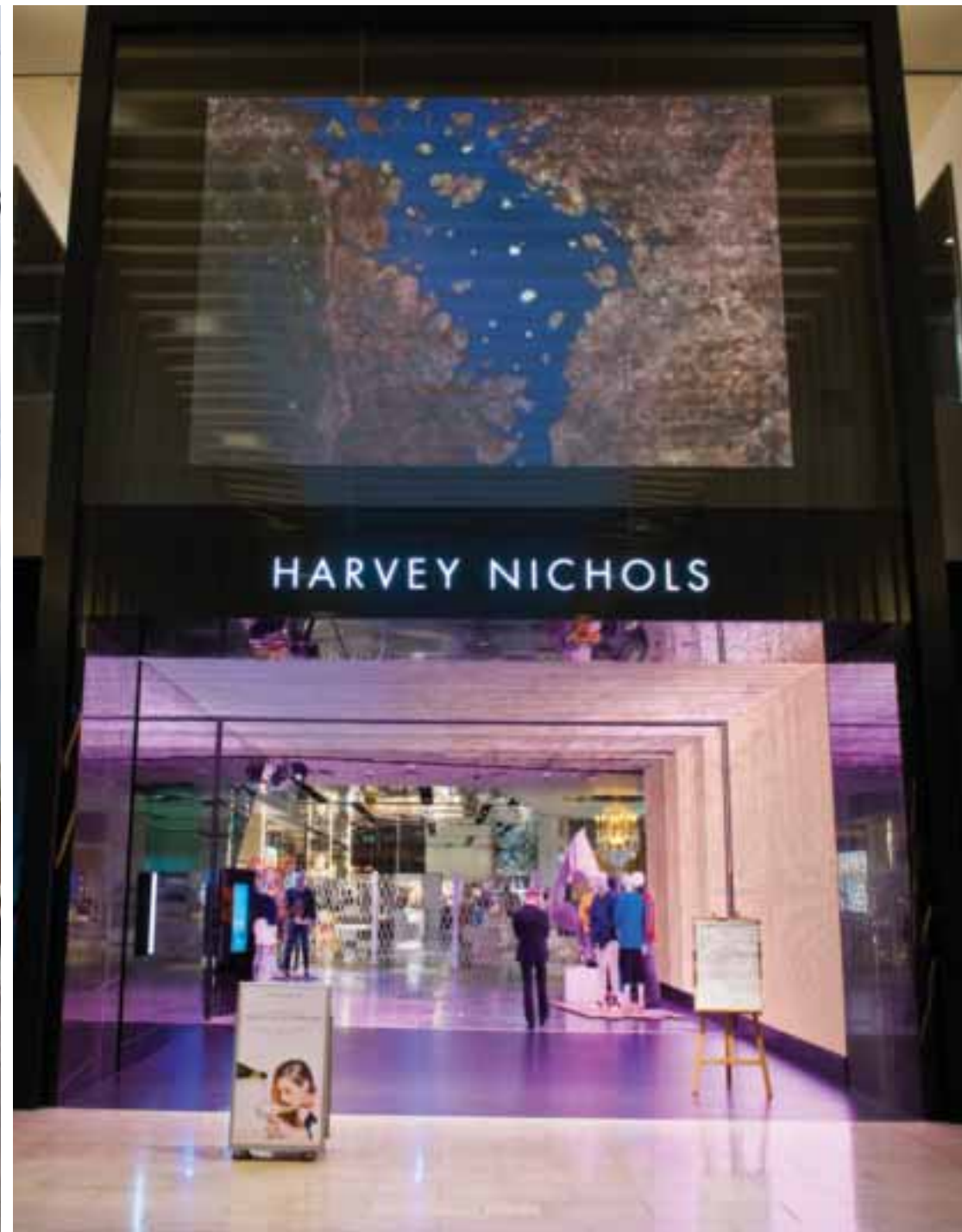
# CHINA TOWN







# THE FINE ART OF RETAIL EXCELLENCE



Given the Bullring has been the city's historic market centre since 1166, it is perhaps little surprise it is now home to some 140 stores including the flagship malls of Selfridge's and Debenhams.



Retail excellence abounds with brand name shopping at the Mailbox and Grand Central, while a host of independents and boutique outlets give an ever present buzz to Birmingham's bustling shopping streets.

The city, in short, is a diverse retail wonderland where farmers markets, local craft galleries and world renowned jewellery shopping go hand in hand with the likes of Harvey Nichols and John Lewis.





### Education

Today, Birmingham is the UK's largest centre of higher education outside of London and home to five universities, two of which rank among the top 100 in the QS World University Rankings.

The most prolific, Birmingham University, Birmingham City University and Aston University, all lie within a 10 minute drive of Timber Yard, together with numerous schools and colleges providing education for all ages.

Birmingham has a student population in excess of 73,000 across its principal universities - with a combined graduate retention of 49% - the second highest outside of London.



### Heritage

Spanning 1400 years of growth, Birmingham has evolved from Anglo-Saxon origins into a capital city with a rich legacy of historic milestones including the industrial revolution, the emergence of the automobile industry and later that of a major European convention centre and shopping destination.

The Jewellery Quarter dates back over 250 years and forms an integral part of its modern day roots with English Heritage citing the Quarter as 'a unique historic environment in England, which has few, if any, parallels in Europe'.

The evidence of the city's illustrious evolution through the decades is ever present today and can be seen in public sculptures, art, museums and galleries across its centre.

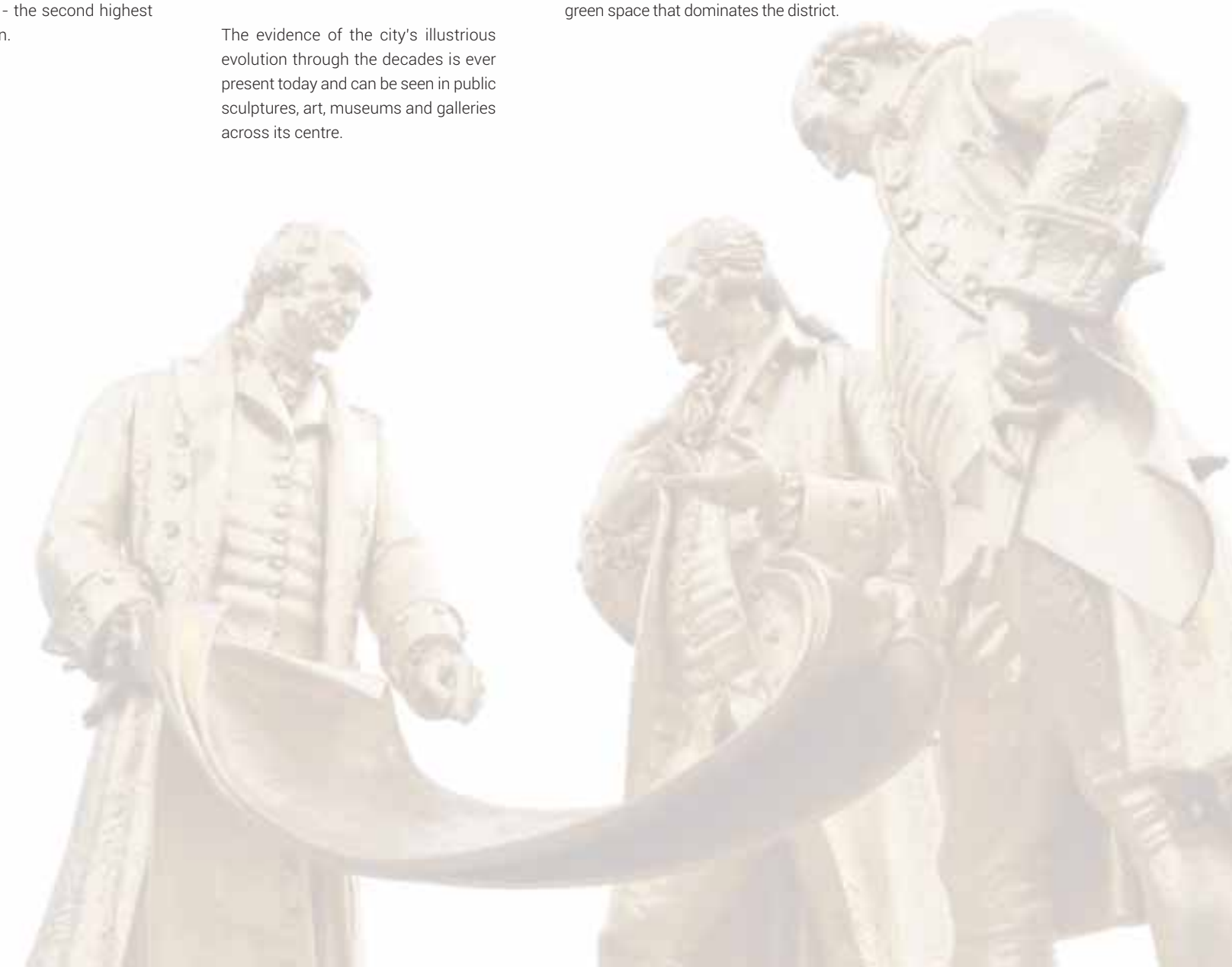


### Recreation

Being one of the UK's greenest cities, Birmingham boasts some 8000 acres of public open space, over 570 parks and the largest urban nature reserve in Europe.

Its sporting status on the world stage can be summed up in one word - Edgbaston, the home of test match cricket for over 100 years.

For residents at Timber Yard there is a plethora of recreational pursuits nearby including tennis, golf, sailing, jogging, cycling or just relaxing in some of the finest urban parkland and unspoilt green space that dominates the district.





BROAD STREET

THE CUBE

BRINDLEY PLACE

BARCLAYCARD ARENA

ICC & SYMPHONY HALL

THE LIBRARY OF BIRMINGHAM

THE MAILBOX

RADISSON BLU

VICTORIA SQUARE

BT TOWER

NEW STREET & GRAND CENTRAL

CATHEDRAL SQUARE

DEBENHAMS

SNOW HILL STATION

THE ROTUNDA

ST MARTIN IN THE BULLRING

BULLRING AND SELFRIDGES

MOOR ST STATION

CHINESE QUARTER & ARCADIAN

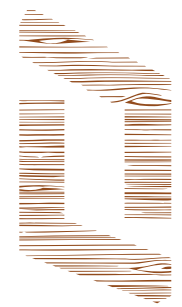
PROPOSED SITE OF BIRMINGHAM SMITHFIELD

# TIMBER YARD - PERFECTION IN PLACE

Apartments minutes from Birmingham's cultural heartland and proposed new leisure and market square showcase redevelopment.







TIMBER YARD  
BIRMINGHAM

# DYNAMIC BY DESIGN

The development



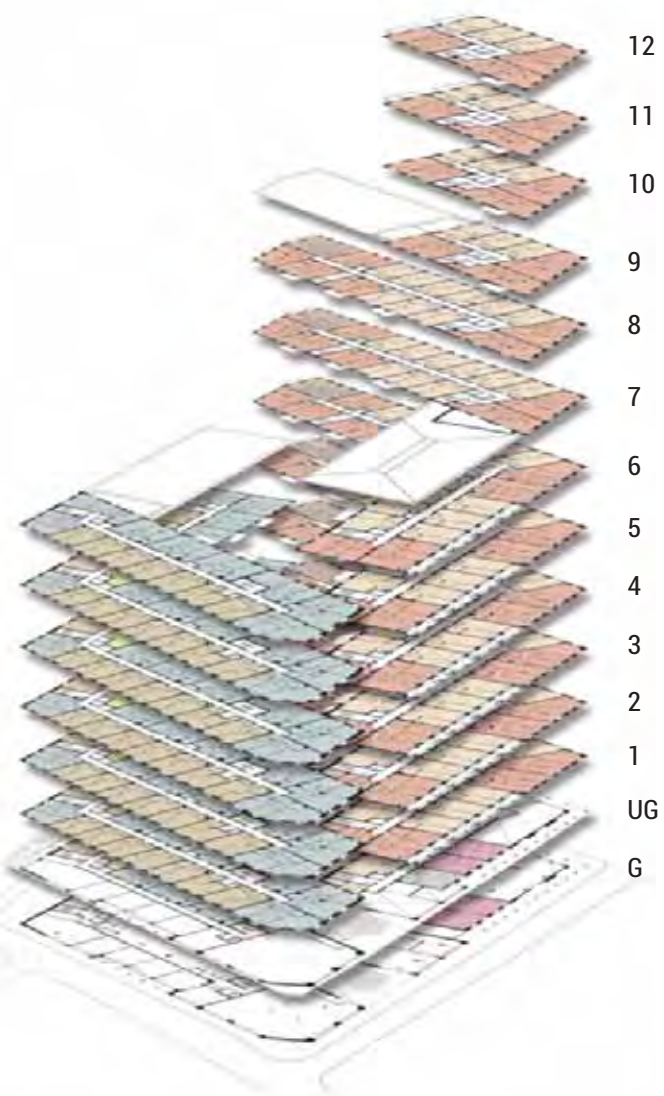




The apartments will be arranged in two buildings - West Block rising to level 6 and East Block, soaring 12 levels to provide stunning views across Birmingham's iconic skyline.

**Development features include:**

- Choice of studio and 1, 2 & 3 bedroom types.
- Many with private balcony, terrace or winter garden.
- Two 2 bedroom duplex apartments, each offering 1031 sqft of superlative living space.
- Extensive undercroft car parking.
- Highly refined specifications and finishes throughout.
- Opulent reception foyer and concierge desk.
- Residents' private gym, club lounge and screening room.
- Communal landscaped courtyard gardens.



WEST BLOCK

EAST BLOCK



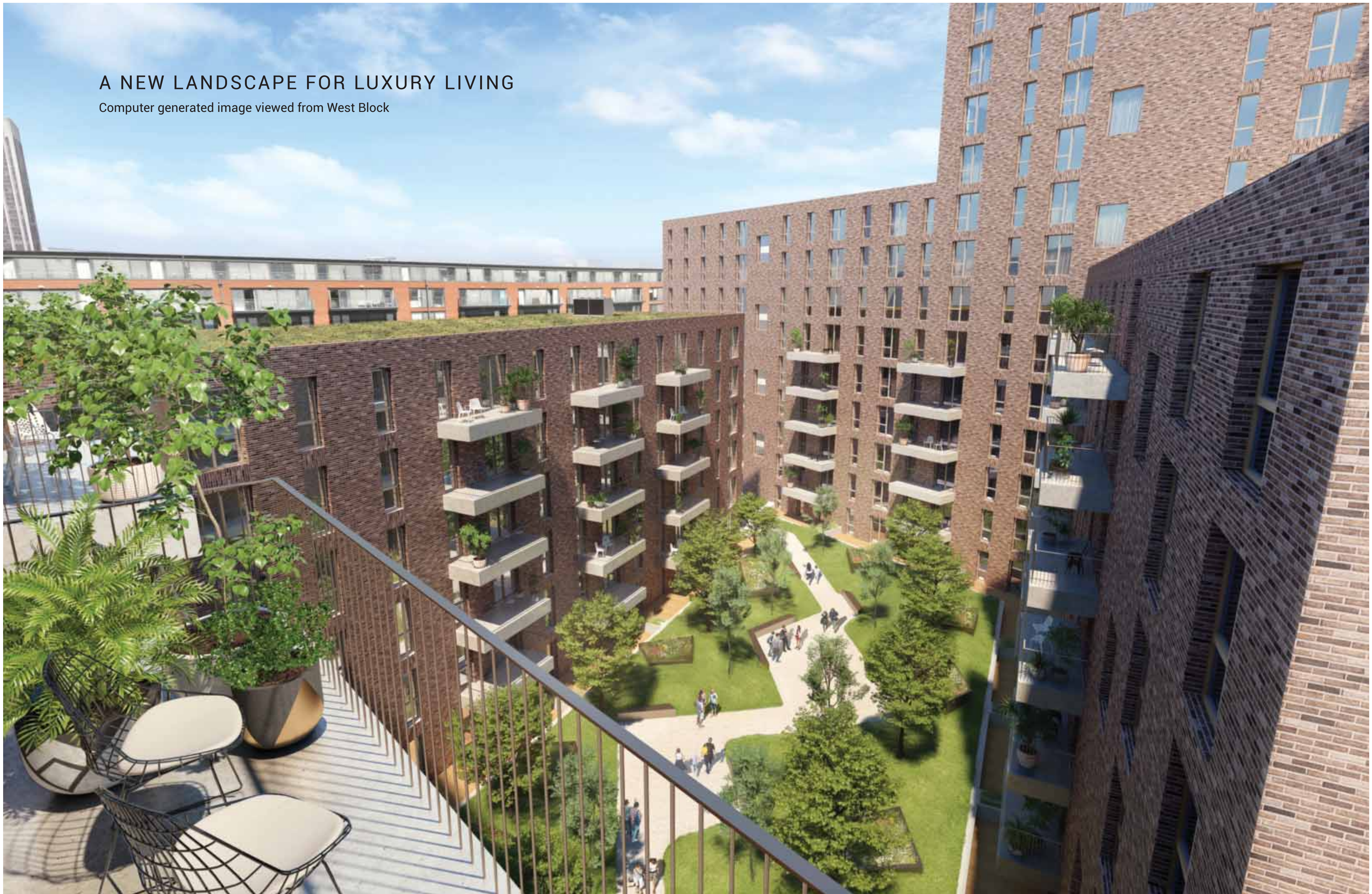
TIMBER YARD HAS BEEN DESIGNED TO A CRITERIA OF ARCHITECTURAL INNOVATION, OUTSTANDING INTEGRATION AND EXCEPTIONAL SPECIFICATION

Illustrative site plan showing Level 1 apartment arrangement.



# A NEW LANDSCAPE FOR LUXURY LIVING

Computer generated image viewed from West Block







TIMBER YARD WILL OFFER AN EXCLUSIVE LIFESTYLE

OPULENT DOUBLE HEIGHT RECEPTION FOYER

CONCIERGE & SERVICES

RESIDENTS' PRIVATE CLUB LOUNGE

SCREENING ROOM

FULLY EQUIPPED GYMNASIUM





LUXURIOUS SPACE

ALIVE WITH STYLE









Each bath and shower room will be finished in large format white marbled porcelain floor and wall tiling with grey timber lined, mirrored alcove and reconstituted stone vanity top.







TIMBER YARD  
BIRMINGHAM

# WEST BLOCK

APARTMENTS

- WEST BLOCK COMPRISES:**
- 6 STUDIO APARTMENTS
  - 78 ONE BEDROOM APARTMENTS
  - 76 TWO BEDROOM APARTMENTS





UG

No.	TYPE	INTERNAL		EXTERNAL	
		SQ.M.	SQ.FT.	SQ.M.	SQ.FT.
W001	1 BED	46.8	504	12.8	138
W002	1 BED	46.8	504	14.0	150
W003	1 BED	44.4	477	14.0	150
W004	1 BED	46.8	504	14.0	150
W005	1 BED	46.8	504	14.4	155
W006	2 BED	69.5	748	19.0	204
W007	2 BED	71.7	772	18.5	199
W008	2 BED	71.0	765	19.0	204
W009	2 BED	71.5	771	18.5	199
W010	2 BED	71.6	770	19.0	204
W011	1 BED	45.9	494	12.0	129
W012	STUDIO	45.0	484	5.5	59
W013	2 BED	71.5	769	15.5	166
W014	2 BED	71.6	770	19.0	204
W015	2 BED	68.9	742	16.0	171

- STUDIO APARTMENT
- 1 BED APARTMENT
- 2 BED APARTMENT



1

No.	TYPE	INTERNAL		EXTERNAL	
		SQ.M.	SQ.FT.	SQ.M.	SQ.FT.
W101	2 BED	68.8	741	-	-
W102	2 BED	70.0	754	-	-
W103	2 BED	71.1	766	-	-
W104	1 BED	45.4	489	-	-
W105	1 BED	37.8	407	-	-
W106	1 BED	45.4	477	-	-
W107	1 BED	45.4	489	-	-
W108	1 BED	45.4	489	-	-
W109	1 BED	45.4	489	-	-
W110	1 BED	45.4	489	-	-
W111	2 BED	70.3	757	-	-
W112	1 BED	46.8	504	-	-
W113	1 BED	46.0	496	-	-
W114	1 BED	44.4	478	-	-
W115	1 BED	46.0	496	-	-
W116	1 BED	46.0	496	-	-
W117	2 BED	69.5	748	-	-
W118	2 BED	71.7	772	-	-
W119	2 BED	71.1	765	8.1	87
W120	2 BED	71.6	770	8.1	87
W121	2 BED	71.6	770	8.1	87
W122	1 BED	45.9	494	-	-
W123	STUDIO	45.0	484	-	-
W124	2 BED	71.5	769	-	-
W125	2 BED	71.6	770	7.7	83
W126	2 BED	68.9	742	7.7	83

- STUDIO APARTMENT
- 1 BED APARTMENT
- 2 BED APARTMENT

UPPER GROUND & LEVEL 1

Block floor plans and apartment layouts shown are intended to be correct, precise details may vary. Total areas are accurate to within 5%.

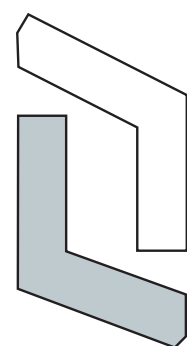




# 2

No.	TYPE	INTERNAL		EXTERNAL	
		SQ.M.	SQ.FT.	SQ.M.	SQ.FT.
W201	2 BED	68.9	741	-	-
W202	2 BED	70.0	754	-	-
W203	2 BED	71.1	766	-	-
W204	1 BED	44.3	477	-	-
W205	1 BED	37.8	407	-	-
W206	1 BED	45.4	477	-	-
W207	1 BED	45.4	489	-	-
W208	1 BED	45.4	489	-	-
W209	1 BED	45.4	489	-	-
W210	1 BED	45.4	489	-	-
W211	2 BED	70.7	761	-	-
W212	1 BED	46.0	495	-	-
W213	1 BED	46.8	504	-	-
W214	1 BED	43.5	468	-	-
W215	1 BED	46.0	496	-	-
W216	1 BED	46.0	496	-	-
W217	2 BED	68.5	738	-	-
W218	2 BED	71.7	772	-	-
W219	2 BED	71.0	765	8.0	86
W220	2 BED	71.5	771	8.0	86
W221	2 BED	71.5	771	8.0	86
W222	1 BED	45.9	494	-	-
W223	STUDIO	45.0	484	-	-
W224	2 BED	71.5	769	-	-
W225	2 BED	71.5	771	7.5	81
W226	2 BED	68.9	742	7.5	81

- STUDIO APARTMENT
- 1 BED APARTMENT
- 2 BED APARTMENT



# 3

No.	TYPE	INTERNAL		EXTERNAL	
		SQ.M.	SQ.FT.	SQ.M.	SQ.FT.
W301	2 BED	68.9	741	-	-
W302	2 BED	70.0	754	-	-
W303	2 BED	71.1	766	-	-
W304	1 BED	44.3	477	-	-
W305	1 BED	37.8	407	-	-
W306	1 BED	45.4	477	-	-
W307	1 BED	45.4	489	-	-
W308	1 BED	45.4	489	-	-
W309	1 BED	45.4	489	-	-
W310	1 BED	45.4	489	-	-
W311	2 BED	70.7	761	-	-
W312	1 BED	46.8	504	-	-
W313	1 BED	46.8	504	-	-
W314	1 BED	44.4	478	-	-
W315	1 BED	46.0	496	-	-
W316	1 BED	46.0	496	-	-
W317	2 BED	68.5	738	-	-
W318	2 BED	71.7	772	-	-
W319	2 BED	71.0	765	8.0	86
W320	2 BED	71.5	771	8.0	86
W321	2 BED	71.5	771	8.0	86
W322	1 BED	45.9	494	-	-
W323	STUDIO	45.0	484	-	-
W324	2 BED	71.4	769	-	-
W325	2 BED	71.5	771	7.5	81
W326	2 BED	68.9	742	7.5	81

## LEVEL 2 & 3

Block floor plans and apartment layouts shown are intended to be correct, precise details may vary. Total areas are accurate to within 5%.





4

No.	TYPE	INTERNAL		EXTERNAL	
		SQ.M.	SQ.FT.	SQ.M.	SQ.FT.
W401	2 BED	68.9	741	-	-
W402	2 BED	70.0	754	-	-
W403	2 BED	71.1	766	-	-
W404	1 BED	44.3	477	-	-
W405	1 BED	37.8	407	-	-
W406	1 BED	44.4	477	-	-
W407	1 BED	45.4	489	-	-
W408	1 BED	45.4	489	-	-
W409	1 BED	45.4	489	-	-
W410	1 BED	45.4	489	-	-
W411	2 BED	70.7	761	-	-
W412	1 BED	46.8	504	-	-
W413	1 BED	46.8	504	-	-
W414	1 BED	44.4	478	-	-
W415	1 BED	46.0	496	-	-
W416	1 BED	46.0	496	-	-
W417	2 BED	69.5	748	-	-
W418	2 BED	71.7	772	-	-
W419	2 BED	71.0	765	8.0	86
W420	2 BED	71.5	771	8.0	86
W421	2 BED	71.5	771	8.0	86
W422	1 BED	45.9	494	-	-
W423	STUDIO	45.0	484	-	-
W424	2 BED	71.5	769	-	-
W425	2 BED	71.5	771	7.5	81
W426	2 BED	68.9	742	7.5	81

- STUDIO APARTMENT
- 1 BED APARTMENT
- 2 BED APARTMENT



5

No.	TYPE	INTERNAL		EXTERNAL	
		SQ.M.	SQ.FT.	SQ.M.	SQ.FT.
W501	2 BED	68.9	741	-	-
W502	2 BED	70.0	754	-	-
W503	2 BED	71.1	766	-	-
W504	1 BED	44.3	477	-	-
W505	1 BED	37.8	407	-	-
W506	1 BED	44.4	477	-	-
W507	1 BED	45.4	489	-	-
W508	1 BED	45.4	489	-	-
W509	1 BED	45.4	489	-	-
W510	1 BED	45.4	489	-	-
W511	2 BED	70.7	761	-	-
W512	1 BED	46.8	504	-	-
W513	1 BED	46.8	504	-	-
W514	1 BED	44.4	478	-	-
W515	1 BED	46.0	496	-	-
W516	1 BED	46.0	496	-	-
W517	2 BED	69.5	748	-	-
W518	2 BED	71.7	772	-	-
W519	2 BED	71.0	765	8.0	86
W520	2 BED	71.5	771	8.0	86
W521	2 BED	71.5	771	8.0	86
W522	1 BED	45.9	494	-	-
W523	STUDIO	44.6	480	-	-
W524	2 BED	71.4	769	-	-
W525	2 BED	71.5	771	7.5	81
W526	2 BED	68.9	742	7.5	81

- STUDIO APARTMENT
- 1 BED APARTMENT
- 2 BED APARTMENT

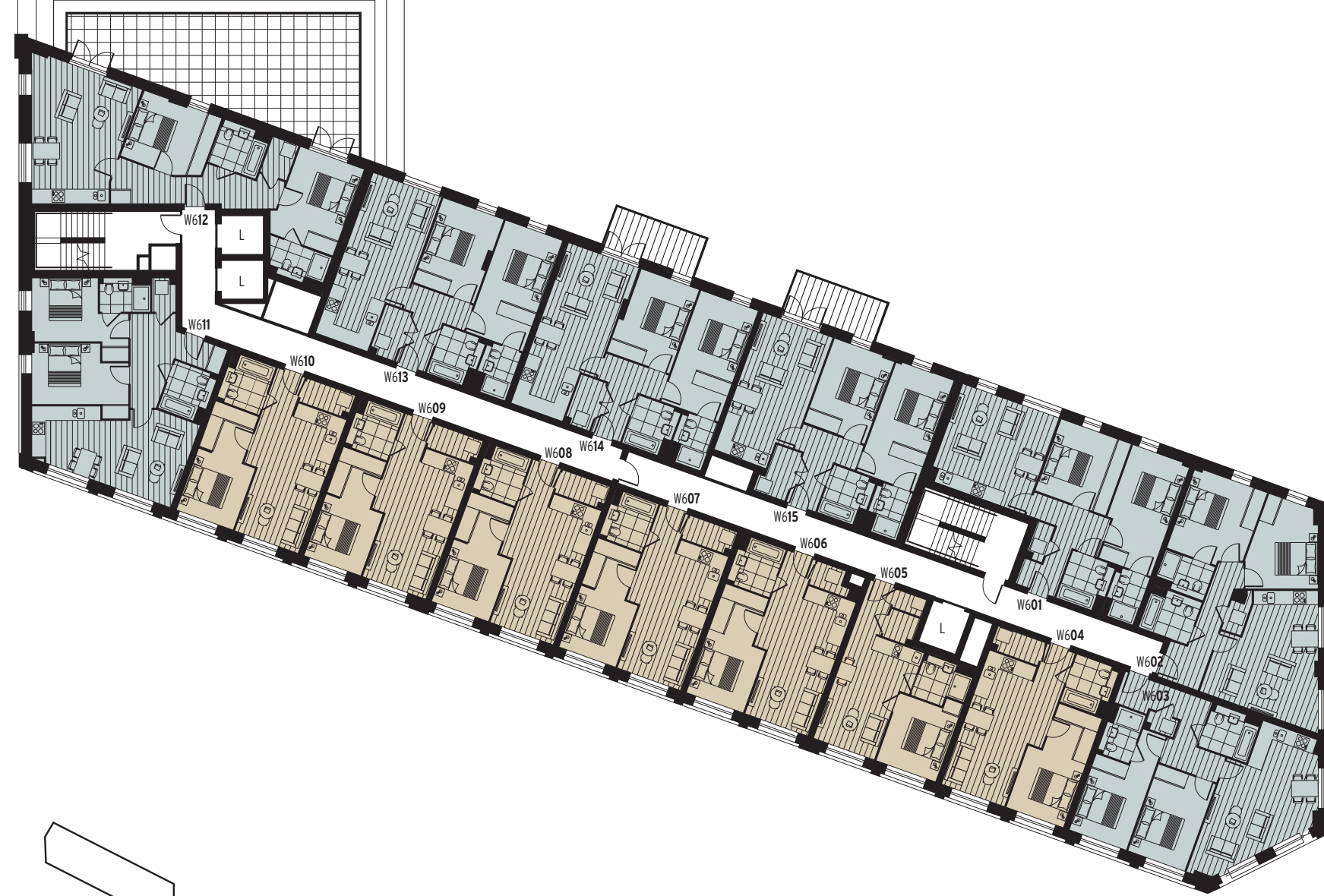
LEVEL 4 & 5

Block floor plans and apartment layouts shown are intended to be correct, precise details may vary. Total areas are accurate to within 5%.



# 6

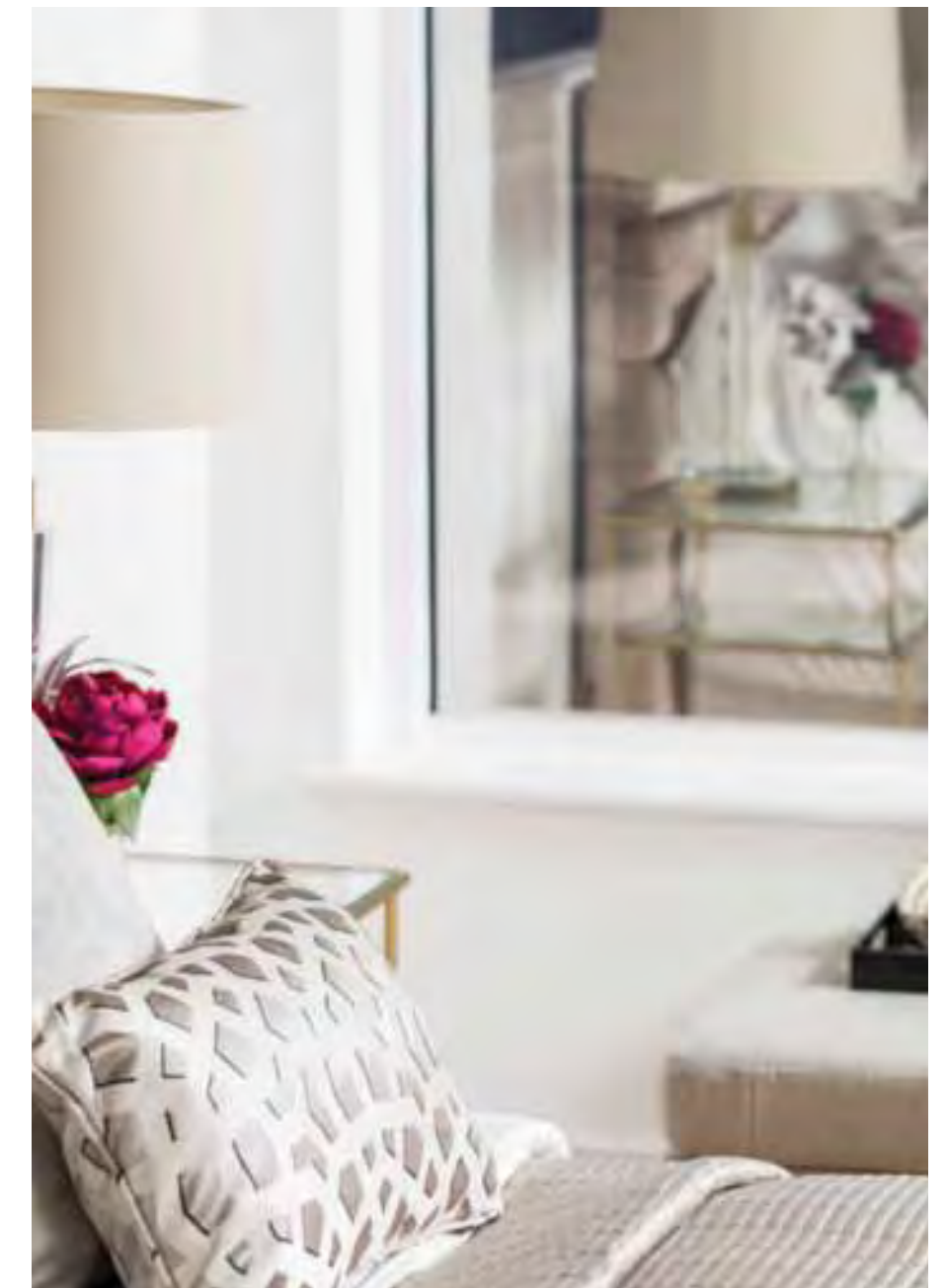
No.	TYPE	INTERNAL		EXTERNAL	
		SQ.M.	SQ.FT.	SQ.M.	SQ.FT.
W601	2 BED	68.9	741	-	-
W602	2 BED	70.0	754	-	-
W603	2 BED	71.1	766	-	-
W604	1 BED	44.3	477	-	-
W605	1 BED	37.8	407	-	-
W606	1 BED	44.4	477	-	-
W607	1 BED	45.4	489	-	-
W608	1 BED	45.4	489	-	-
W609	1 BED	45.4	489	-	-
W610	1 BED	45.4	489	-	-
W611	2 BED	70.7	761	-	-
W612	2 BED	76.8	827	56.0	601
W613	2 BED	71.5	769	-	-
W614	2 BED	71.6	770	7.7	83
W615	2 BED	68.9	742	7.7	83



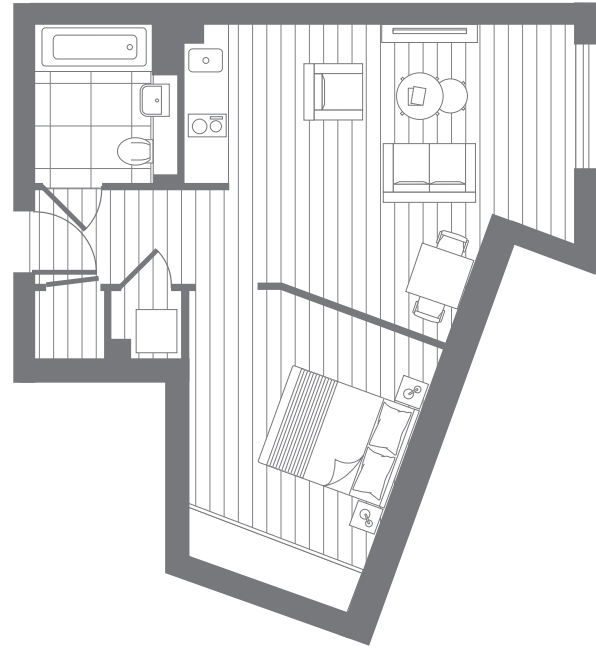
1 BED APARTMENT  
2 BED APARTMENT

## LEVEL 6

Block floor plans and apartment layouts shown are intended to be correct, precise details may vary. Total areas are accurate to within 5%.





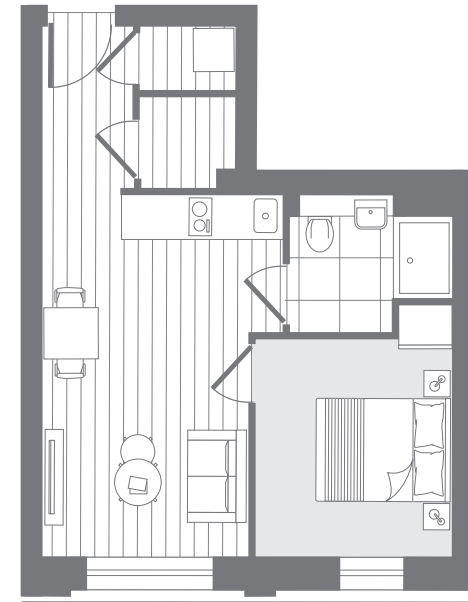


**STUDIO APARTMENT W123**

West block has 7 of this style

Living area 5.7 x 4.2m 18'8" x 13'9"  
 Bedroom area 3.6 x 3.4m 11'10" x 11'2"

**Internal Area 44.6 sq.m. 480 sq.ft.**

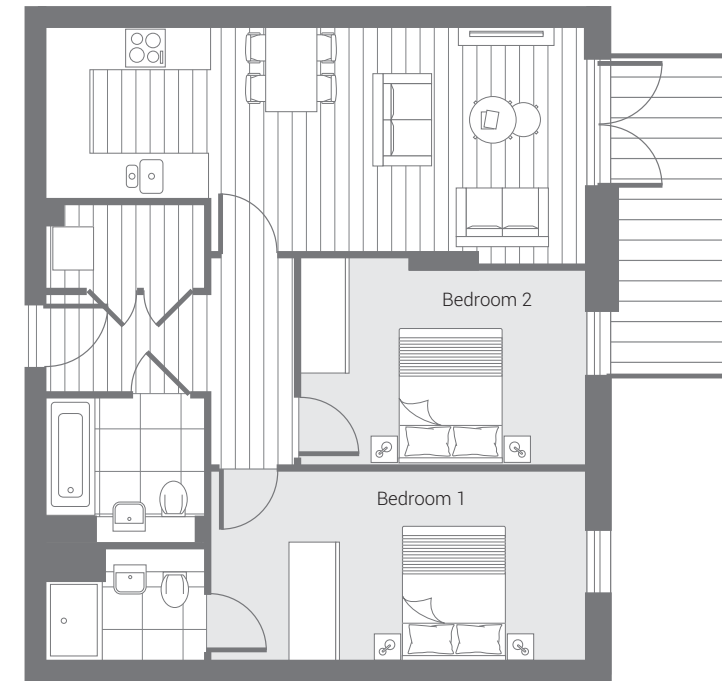


**1 BEDROOM APARTMENT W105**

West block has 6 of this style

Living area 3.0 x 5.2m 9'8" x 17'1"  
 Bedroom area 2.8 x 3.2m 9'2" x 10'5"

**Internal Area 38.0 sq.m. 410 sq.ft.**



**2 BEDROOM APARTMENT W120**

West block has 32 of this style, the majority with balcony

Living area 5.4 x 3.2m 17'9" x 10'6"  
 Kitchen area 2.4 x 2.4m 7'10" x 7'10"  
 Bedroom 1 5.4 x 2.7m 17'9" x 8'10"  
 Bedroom 2 4.1 x 3.0m 13'5" x 9'10"

**Internal Area 71.5 sq.m. 771 sq.ft.**  
**External Area 8.0 sq.m. 86 sq.ft.**

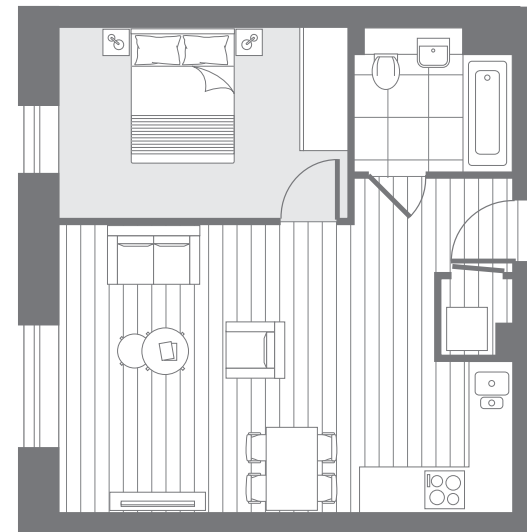


**2 BEDROOM APARTMENT W102**

West block has 6 of this style

Living area 5.6 x 6.0m 18'4" x 19'8"  
 Bedroom 1 3.4 x 3.9m 11'2" x 12'10"  
 Bedroom 2 4.1 x 3.3m 13'5" x 10'10"

**Internal Area 70.0 sq.m. 754 sq.ft.**

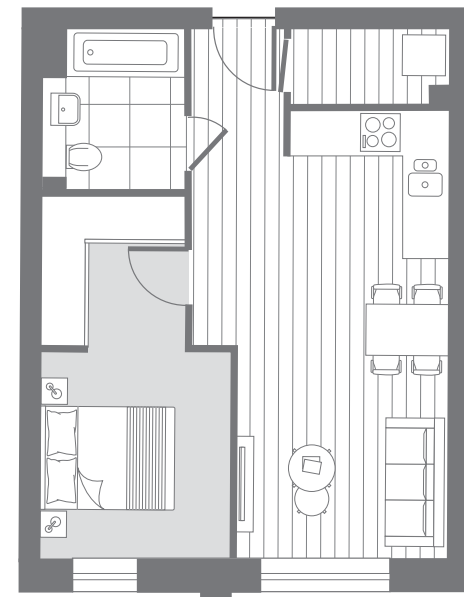


**1 BEDROOM APARTMENT W115**

West block has 24 of this style (each at upper ground featuring a terrace)

Living area 6.6 x 4.1m 21'8" x 13'5"  
 Bedroom 1 4.2 x 2.7m 13'9" x 8'10"

**Internal Area 46.0 sq.m. 496 sq.ft.**

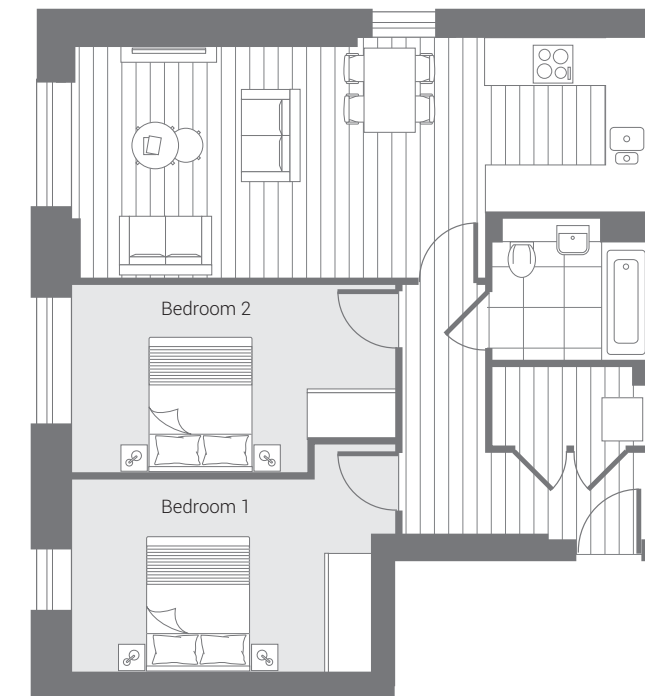


**1 BEDROOM APARTMENT W108**

West block has 42 of this style

Living area 6.5 x 3.7m 21'4" x 12'2"  
 Bedroom 1 2.7 x 5.2m 8'10" x 17'1"

**Internal Area 45.4 sq.m. 489 sq.ft.**

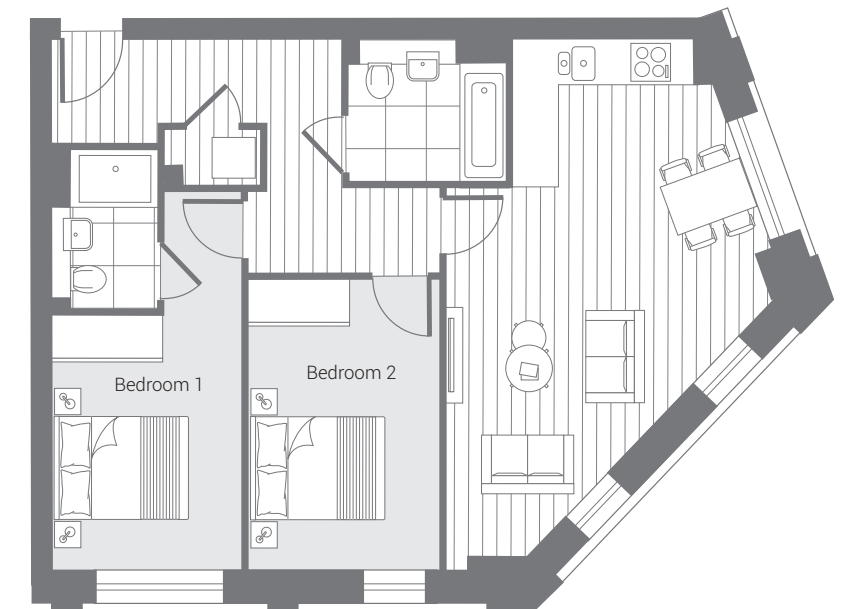


**2 BEDROOM APARTMENT W117**

West block has 6 of this style (Upper ground featuring a terrace)

Living area 6.0 x 3.3m 19'8" x 10'10"  
 Kitchen area 2.4 x 2.5m 7'10" x 8'2"  
 Bedroom 1 4.7 x 2.8m 15'5" x 9'2"  
 Bedroom 2 4.7 x 2.7m 15'5" x 8'10"

**Internal Area 68.5 sq.m. 738 sq.ft.**

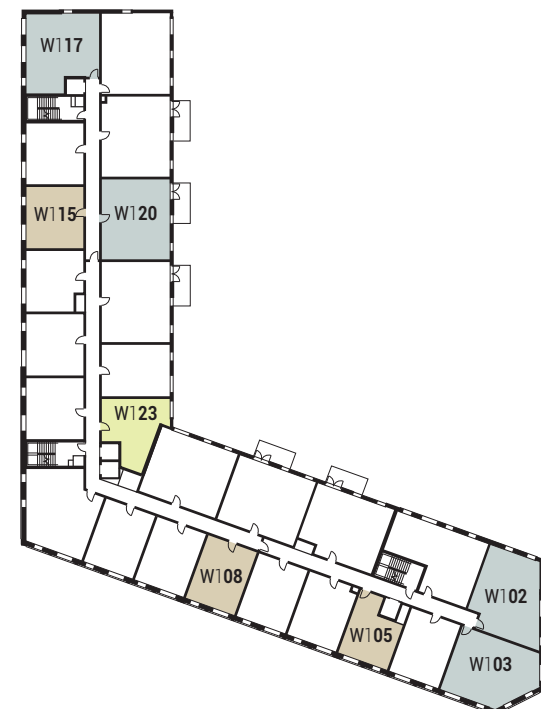


**2 BEDROOM APARTMENT W103**

West block has 6 of this style

Living area 4.6 x 7.5m 15'1" x 24'7"  
 Bedroom 1 2.7 x 5.5m 8'10" x 18'0"  
 Bedroom 2 2.7 x 4.2m 8'10" x 13'9"

**Internal Area 71.1 sq.m. 766 sq.ft.**



- STUDIO APARTMENT
- 1 BED APARTMENT
- 2 BED APARTMENT

Typical block floor plan showing location of each example apartment style.

**EXAMPLE APARTMENT STYLES**

Apartment layouts shown are intended to be correct, precise details may vary. Total areas are accurate to within 5%. Room dimensions are approximate, indicate maximum achievable and should be used as a guide only.





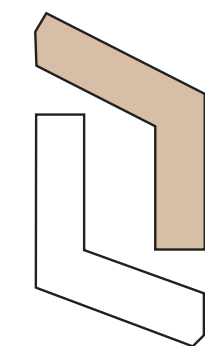
TIMBER YARD  
BIRMINGHAM

# EAST BLOCK APARTMENTS

**EAST BLOCK COMPRISES:**

- 1 STUDIO APARTMENT
- 135 ONE BEDROOM APARTMENTS
- 73 TWO BEDROOM APARTMENTS
- 2 TWO BEDROOM DUPLEX APARTMENTS
- 8 THREE BEDROOM APARTMENTS





- STUDIO APARTMENT
- 1 BED APARTMENT
- 2 BED APARTMENT
- 3 BED APARTMENT
- 2 BED DUPLEX



GROUND, UPPER GROUND & LEVEL 1

Block floor plans and apartment layouts shown are intended to be correct, precise details may vary. Total areas are accurate to within 5%.

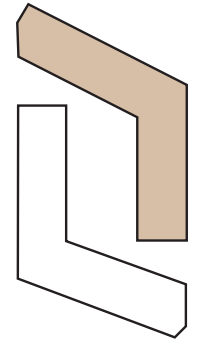




# 2

No.	TYPE	INTERNAL		EXTERNAL	
		SQ.M.	SQ.FT.	SQ.M.	SQ.FT.
E201	2 BED	71.2	767	8.0	86
E202	2 BED	73.5	791	-	-
E203	3 BED	92.6	997	8.0	86
E204	2 BED	65.7	708	-	-
E205	1 BED	45.4	489	-	-
E206	1 BED	45.4	489	-	-
E207	1 BED	45.4	489	-	-
E208	1 BED	45.3	488	-	-
E209	1 BED	45.4	489	-	-
E210	1 BED	45.4	489	-	-
E211	2 BED	73.8	794	-	-
E212	2 BED	76.7	826	-	-
E213	1 BED	47.7	514	10.0	107
E214	1 BED	47.7	514	10.0	107
E215	1 BED	47.7	514	10.0	107
E216	2 BED	84.3	908	15.0	161
E217	2 BED	71.4	770	-	-
E218	1 BED	51.3	552	8.5	91
E219	1 BED	43.9	473	-	-
E220	1 BED	46.4	500	8.5	91
E221	1 BED	49.5	534	-	-
E222	1 BED	45.9	494	-	-
E223	1 BED	45.7	493	7.5	81
E224	1 BED	45.9	494	-	-
E225	2 BED	69.1	745	8.0	86

- STUDIO APARTMENT
- 1 BED APARTMENT
- 2 BED APARTMENT
- 3 BED APARTMENT
- 2 BED DUPLEX



# 3

No.	TYPE	INTERNAL		EXTERNAL	
		SQ.M.	SQ.FT.	SQ.M.	SQ.FT.
E301	2 BED	71.2	767	8.0	86
E302	2 BED	73.5	791	-	-
E303	3 BED	92.6	997	8.0	86
E304	2 BED	65.7	708	-	-
E305	1 BED	45.4	489	-	-
E306	1 BED	45.4	489	-	-
E307	1 BED	45.4	489	-	-
E308	1 BED	45.3	488	-	-
E309	1 BED	45.4	489	-	-
E310	1 BED	45.4	489	-	-
E311	2 BED	73.8	794	-	-
E312	2 BED	76.7	826	-	-
E313	1 BED	47.7	514	10.0	107
E314	1 BED	47.7	514	10.0	107
E315	1 BED	47.7	514	10.0	107
E316	2 BED	84.4	908	13.8	148
E317	2 BED	71.4	770	-	-
E318	1 BED	51.3	552	8.5	91
E319	1 BED	43.9	473	-	-
E320	1 BED	46.4	500	8.5	91
E321	1 BED	49.5	534	-	-
E322	1 BED	45.9	494	-	-
E323	1 BED	45.7	493	7.5	81
E324	1 BED	45.9	494	-	-
E325	2 BED	69.1	745	8.0	86

## LEVEL 2 & 3

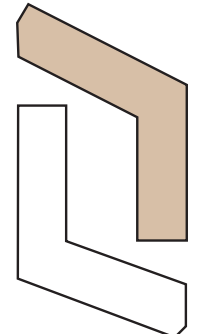
Block floor plans and apartment layouts shown are intended to be correct, precise details may vary. Total areas are accurate to within 5%.





# 4

- STUDIO APARTMENT
- 1 BED APARTMENT
- 2 BED APARTMENT
- 3 BED APARTMENT
- 2 BED DUPLEX



# 5

## LEVEL 4 & 5

Block floor plans and apartment layouts shown are intended to be correct, precise details may vary. Total areas are accurate to within 5%.

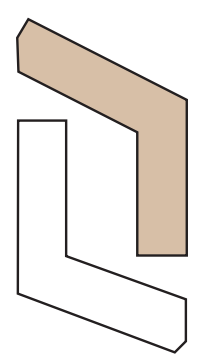




# 6

No.	TYPE	INTERNAL		EXTERNAL	
		SQ.M.	SQ.FT.	SQ.M.	SQ.FT.
E601	2 BED	71.2	767	8.0	86
E602	2 BED	73.5	791	-	-
E603	3 BED	92.6	997	8.0	86
E604	2 BED	65.7	708	-	-
E605	1 BED	45.4	489	-	-
E606	1 BED	45.4	489	-	-
E607	1 BED	45.4	489	-	-
E608	1 BED	45.3	488	-	-
E609	1 BED	45.4	489	-	-
E610	1 BED	45.4	489	-	-
E611	2 BED	73.7	794	-	-
E612	2 BED	76.7	826	-	-
E613	1 BED	47.7	514	10.0	107
E614	1 BED	47.7	514	10.0	107
E615	1 BED	47.7	514	10.0	107
E616	2 BED	84.3	908	15.0	161
E617	2 BED	71.4	770	-	-
E618	1 BED	51.3	552	8.5	91
E619	1 BED	43.9	473	-	-
E620	1 BED	46.4	500	8.5	91
E621	1 BED	49.5	534	-	-
E622	1 BED	45.9	494	-	-
E623	1 BED	45.7	493	7.5	81
E624	1 BED	45.9	494	-	-
E625	2 BED	69.1	745	8.0	86

- STUDIO APARTMENT
- 1 BED APARTMENT
- 2 BED APARTMENT
- 3 BED APARTMENT
- 2 BED DUPLEX



# 7

No.	TYPE	INTERNAL		EXTERNAL	
		SQ.M.	SQ.FT.	SQ.M.	SQ.FT.
E701	2 BED	71.2	767	8.0	86
E702	2 BED	73.5	791	-	-
E703	3 BED	92.6	997	8.0	86
E704	2 BED	65.7	708	-	-
E705	1 BED	45.4	489	-	-
E706	1 BED	45.4	489	-	-
E707	1 BED	45.4	489	-	-
E708	1 BED	45.3	488	-	-
E709	1 BED	45.4	489	-	-
E710	1 BED	45.4	489	-	-
E711	2 BED	76.5	823	-	-
E712	2 BED	75.2	810	40.0	431
E713	1 BED	45.9	494	-	-
E714	1 BED	45.7	493	7.5	81
E715	1 BED	45.9	494	-	-
E716	2 BED	69.1	745	8.0	86

## LEVEL 6 & 7

Block floor plans and apartment layouts shown are intended to be correct, precise details may vary. Total areas are accurate to within 5%.





**9**

No.	TYPE	INTERNAL		EXTERNAL	
		SQ.M.	SQ.FT.	SQ.M.	SQ.FT.
E901	2 BED	79.9	861	32.5	350
E902	1 BED	49.8	537	32.5	350
E903	1 BED	45.4	489	-	-
E904	1 BED	45.4	489	-	-
E905	2 BED	76.5	823	-	-
E906	2 BED	75.2	810	7.5	71



**12**

No.	TYPE	INTERNAL		EXTERNAL	
		SQ.M.	SQ.FT.	SQ.M.	SQ.FT.
E1201	2 BED	79.9	861	10.0	108
E1202	1 BED	49.8	537	10.0	108
E1203	1 BED	45.4	489	-	-
E1204	1 BED	45.4	489	-	-
E1205	2 BED	76.5	823	-	-
E1206	2 BED	75.2	810	7.5	71



**11**

No.	TYPE	INTERNAL		EXTERNAL	
		SQ.M.	SQ.FT.	SQ.M.	SQ.FT.
E1101	2 BED	79.9	861	10.0	108
E1102	1 BED	49.8	537	10.0	108
E1103	1 BED	45.4	489	-	-
E1104	1 BED	45.4	489	-	-
E1105	2 BED	76.5	823	-	-
E1106	2 BED	75.3	810	7.7	83



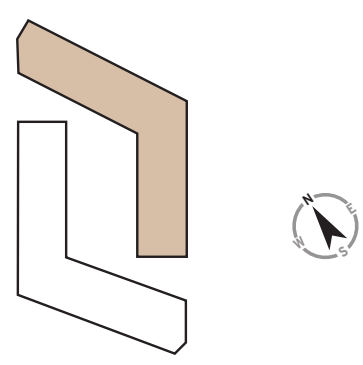
**10**

No.	TYPE	INTERNAL		EXTERNAL	
		SQ.M.	SQ.FT.	SQ.M.	SQ.FT.
E1001	2 BED	79.9	861	-	-
E1002	1 BED	49.8	537	-	-
E1003	1 BED	45.4	489	-	-
E1004	1 BED	45.4	489	-	-
E1005	2 BED	76.5	823	-	-
E1006	2 BED	75.2	810	7.5	71

- 1 BED APARTMENT
- 2 BED APARTMENT
- 3 BED APARTMENT

**8**

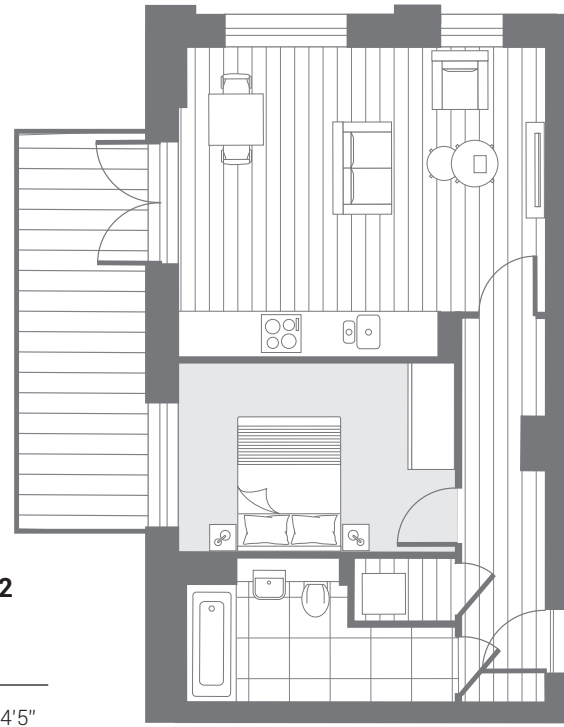
No.	TYPE	INTERNAL		EXTERNAL	
		SQ.M.	SQ.FT.	SQ.M.	SQ.FT.
E801	2 BED	71.2	767	8.0	86
E802	2 BED	73.5	791	-	-
E803	3 BED	92.6	997	8.0	86
E804	2 BED	65.7	708	-	-
E805	1 BED	45.4	489	-	-
E806	1 BED	45.4	489	-	-
E807	1 BED	45.4	489	-	-
E808	1 BED	45.3	488	-	-
E809	1 BED	45.4	489	-	-
E810	1 BED	45.4	489	-	-
E811	2 BED	76.5	823	-	-
E812	2 BED	75.3	810	-	-
E813	1 BED	45.9	494	-	-
E814	1 BED	45.7	493	7.5	81
E815	1 BED	45.9	494	-	-
E816	2 BED	69.1	745	8.0	86



LEVEL 8, 9, 10, 11 & 12

Block floor plans and apartment layouts shown are intended to be correct, precise details may vary. Total areas are accurate to within 5%.



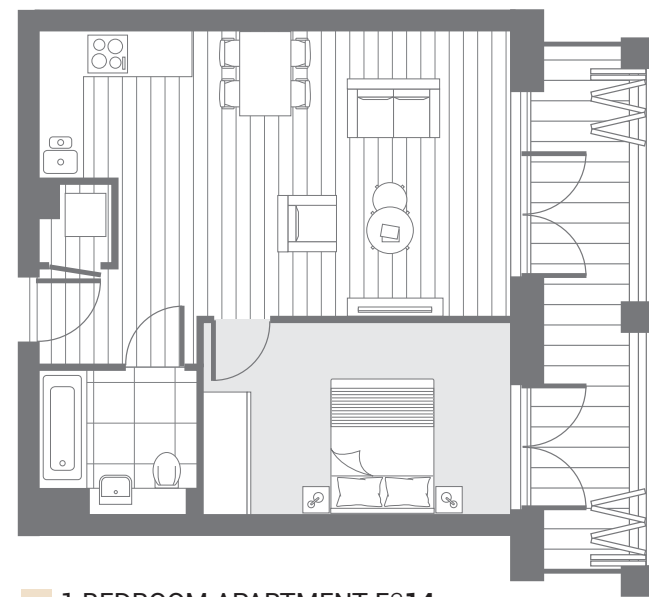


**1 BEDROOM APARTMENT E1102**

East block has 4 of this style  
(3 with balcony or terrace)

Living area	5.2 x 4.4m	17'1" x 14'5"
Bedroom 1	4.0 x 2.7m	13'1" x 8'10"

Internal Area	49.8 sq.m.	537 sq.ft.
External Area	10.0 sq.m.	108 sq.ft.

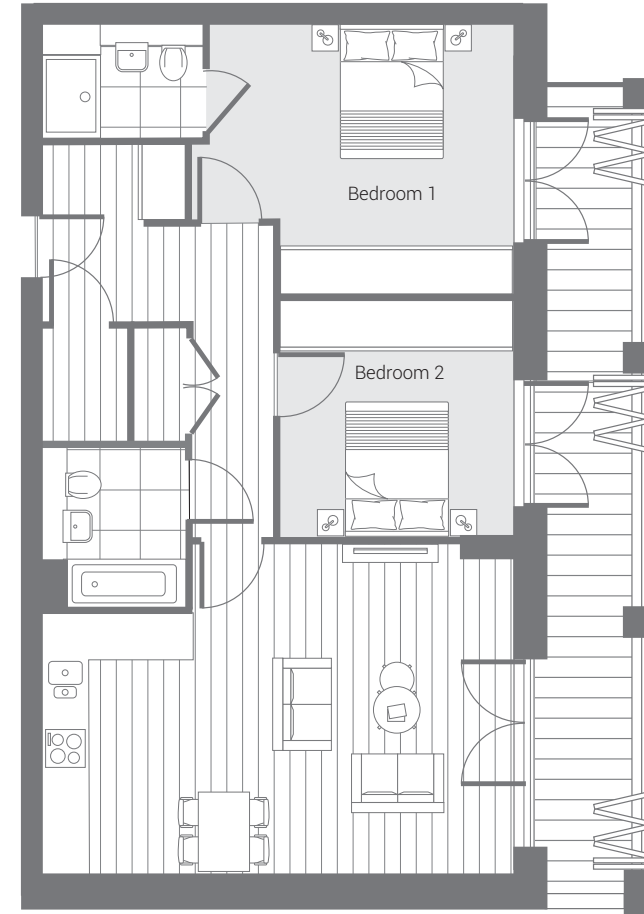


**1 BEDROOM APARTMENT E214**

East block has 18 of this style

Living area	6.8 x 4.1m	22'4" x 13'5"
Bedroom 1	4.4 x 2.7m	14'5" x 8'10"

Internal Area	47.7 sq.m.	514 sq.ft.
External Area	10.0 sq.m.	107 sq.ft.



**2 BEDROOM APARTMENT E216**

East block has 6 of this style

Living area	4.6 x 4.8m	15'1" x 15'7"
Kitchen area	3.7 x 2.2m	12'1" x 7'2"
Bedroom 1	4.4 x 3.2m	14'4" x 10'5"
Bedroom 2	3.3 x 2.6m	10'8" x 8'5"

Internal Area	84.3 sq.m.	908 sq.ft.
External Area	15.0 sq.m.	161 sq.ft.

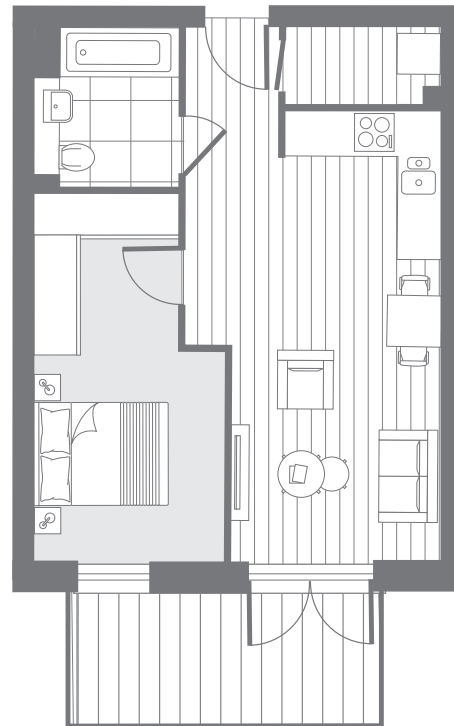


**2 BEDROOM APARTMENT E1105**

East block has 6 of this style

Living area	7.5 x 4.8m	24'7" x 15'9"
Bedroom 1	3.4 x 4.5m	11'2" x 14'9"
Bedroom 2	3.2 x 3.9m	10'6" x 12'10"

Internal Area	76.4 sq.m.	823 sq.ft.
---------------	------------	------------

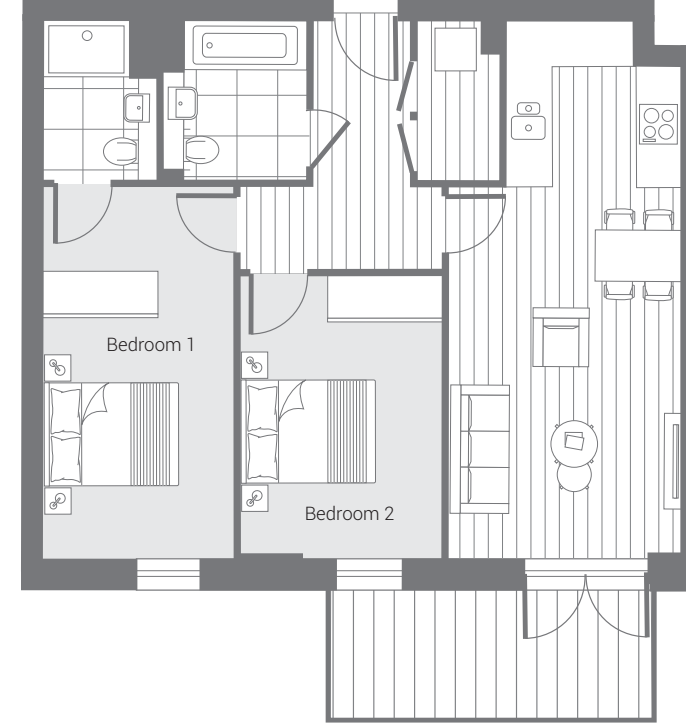


**1 BEDROOM APARTMENT E223**

East block has 83 of this style  
(selected with balcony or terrace)

Living area	6.5 x 3.7m	21'4" x 12'2"
Bedroom 1	2.7 x 4.7m	8'10" x 15'5"

Internal Area	45.7 sq.m.	493 sq.ft.
External Area	7.5 sq.m.	81 sq.ft.

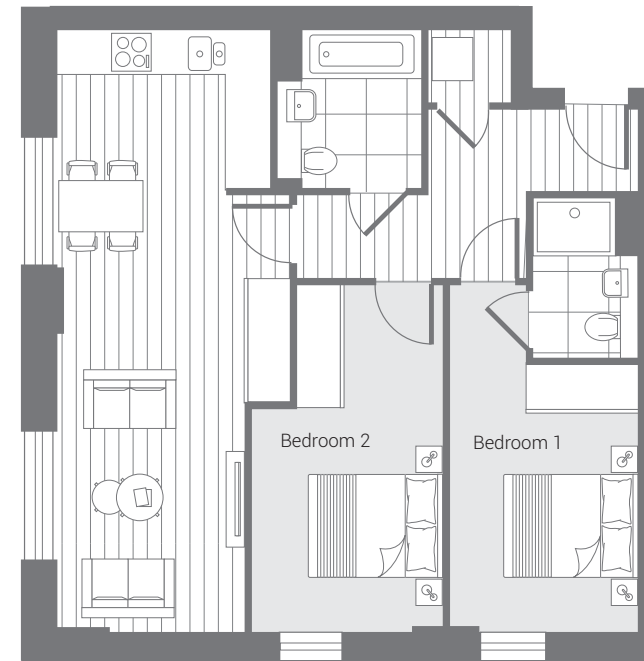


**2 BEDROOM APARTMENT E201**

East block has 8 of this style

Living area	3.3 x 5.4m	10'10" x 17'9"
Kitchen area	2.5 x 2.4m	8'2" x 7'10"
Bedroom 1	2.7 x 5.4m	8'10" x 17'9"
Bedroom 2	2.9 x 4.1m	9'6" x 13'5"

Internal Area	71.2 sq.m.	767 sq.ft.
External Area	8.0 sq.m.	86 sq.ft.

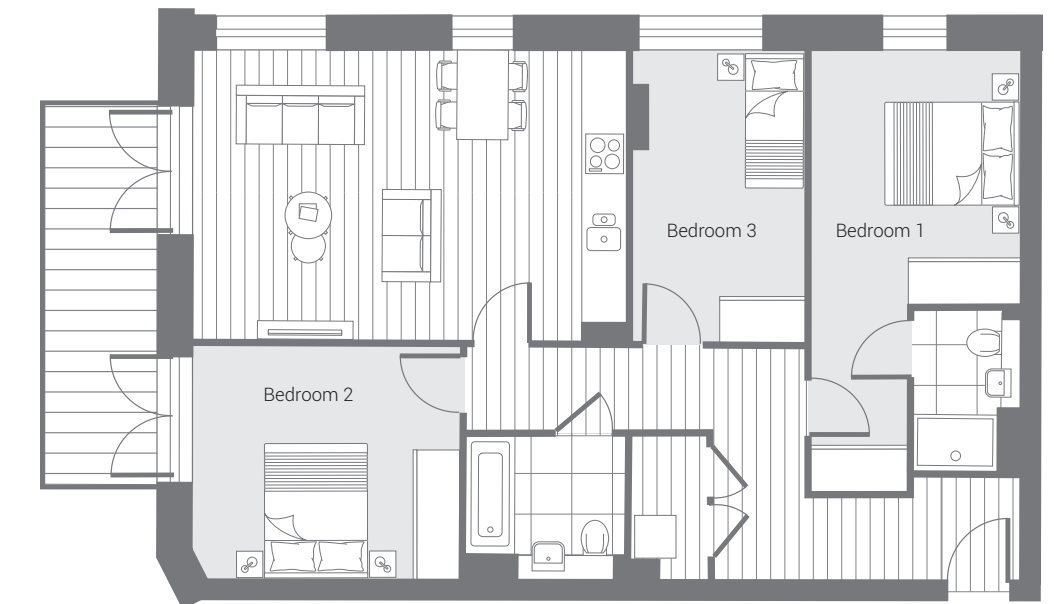


**2 BEDROOM APARTMENT E217**

East block has 6 of this style

Living area	2.7 x 8.6m	8'10" x 28'3"
Bedroom 1	2.7 x 5.0m	8'10" x 16'5"
Bedroom 2	2.7 x 5.0m	8'10" x 16'5"

Internal Area	71.4 sq.m.	770 sq.ft.
---------------	------------	------------

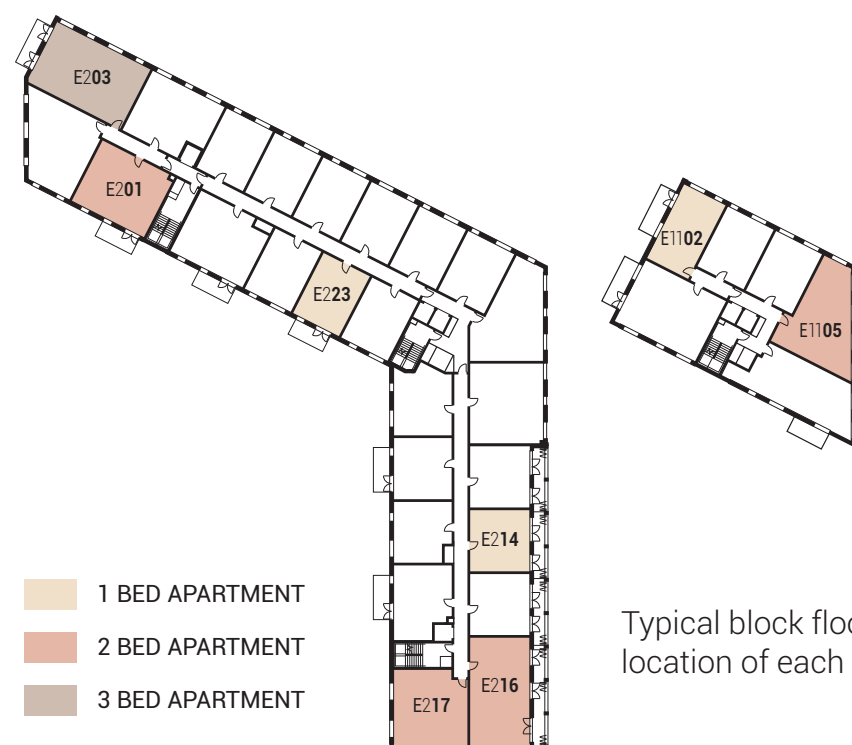


**3 BEDROOM APARTMENT E203**

East block has 8 of this style  
(All but one with balcony)

Living area	6.2 x 4.2m	20'4" x 13'9"
Bedroom 1	3.0 x 5.7m	9'10" x 18'8"
Bedroom 2	3.8 x 3.3m	12'6" x 10'10"
Bedroom 3	2.5 x 4.2m	8'2" x 13'9"

Internal Area	92.6 sq.m.	997 sq.ft.
External Area	8.0 sq.m.	86 sq.ft.



Typical block floor plans showing location of each example apartment style.

**EXAMPLE APARTMENT STYLES**

Apartment layouts shown are intended to be correct, precise details may vary. Total areas are accurate to within 5%. Room dimensions are approximate, indicate maximum achievable and should be used as a guide only.



## Specification

### General

- Walls & ceilings in white matt finish.
- Satin white door linings, skirtings & architraves.
- Oak plank Amtico click system throughout hall, living room, bedrooms and kitchen area.
- Internal doors in satin white finish.
- Brushed stainless steel door furniture.
- Brushed metal switch & socket plates with USB charging points in kitchen, living area and bedroom.
- Recessed LED low energy downlighting with white bezels.
- Terrestrial & satellite TV, FM radio and telephone sockets to living room and bedrooms.
- Living room socket Sky+ (or Sky Q) enabled.
- Thermostatically controlled electric space heating via flat panel heaters.
- Double glazing throughout.

### Kitchens

- Designer kitchen in high gloss grey finish with concealed handles.
- Reconstituted stone worktops (with grooved drainer to selected apartments).
- Glass splashback to underside of wall units.
- LED strip underlighting to wall units.
- Stainless steel 1½ bowl undermount sink with chrome lever tap.
- Washer/dryer (free standing within services cupboard).
- Smeg (or similar quality) integrated electric appliances to include:
  - Low level oven
  - Microwave
  - Four ring ceramic hob
  - Re-circulating cooker hood
  - Tall fridge/freezer
  - Dishwasher
 (Appliances stated may be restricted in smaller/1 bed kitchen configurations).

### Bedrooms

- Full height built-in wardrobe to bedroom 1 with satin white sliding doors (hinged doors in restricted areas).

### Bathroom/Shower Room

- White bathroom suite featuring shower tray or steel bath as applicable, concealed cistern dual flush back to wall W.C.
- White glass bath panel.
- Chrome plated electric heated towel rail.
- Mirrored inset grey timber lined alcoves with integrated storage cupboards, reconstituted stone vanity top and LED feature downlighting.
- Large format 1200 x 600mm white marbled porcelain fully tiled walls.
- Large format 600 x 600mm white marbled porcelain floor tiling.
- Chrome plated single lever basin tap, thermostatic bath filler/shower mixer diverter with wall mounted fixed shower head and low level hand shower with hose.
- Clear glass bath screen or shower enclosure as applicable with silver frame.
- Thermostatically controlled and pressurised hot and cold water.

### Services Cupboard

- Free standing washer/dryer.
- Bulkhead light if applicable.

### Security

- Video entryphone system to each apartment.

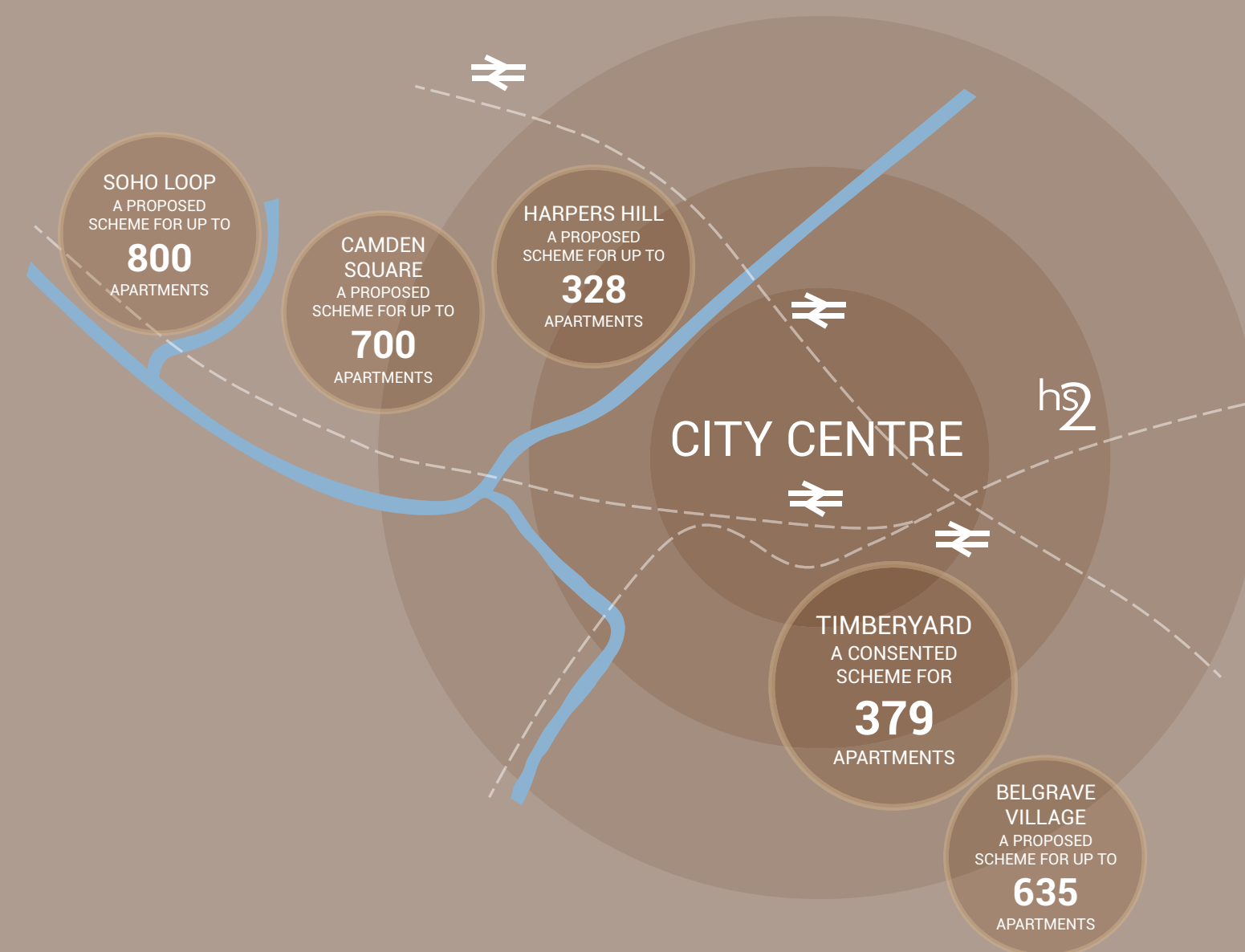
### Communal Areas

- Fully tiled communal entrance foyers.
- Residents' communal club/lounge.
- Fully equipped gymnasium.
- Residents' screening room.
- Concierge and services.
- Carpeted lift lobbies, stairs and common corridors.
- Private residents' lifts serving all apartment levels.
- Low energy wall lighting.
- Landscaped communal courtyard gardens.
- Secure cycle store.
- Undercroft car parking (at additional cost).



# THE GALLIARD APSLEY PARTNERSHIP

Building the catalyst for the regeneration of Birmingham's cityscape with a masterplan for over 2800 apartments



Galliard Homes' furniture solution specialists

[www.newconceptfurnishings.com](http://www.newconceptfurnishings.com)  
+44(0) 20 8502 3308



Galliard Homes' associated mortgage specialists

[www.visionaryfinance.co.uk](http://www.visionaryfinance.co.uk)  
+44(0) 20 7100 4754



Galliard Homes' official letting and management agents

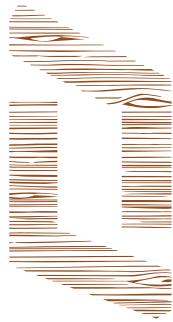
[www.liferesidential.co.uk](http://www.liferesidential.co.uk)  
+44(0) 20 8896 9990



London Central Sales open 7 days

[www.galliardhomes.com](http://www.galliardhomes.com)  
+44(0) 20 7620 1500





TIMBER YARD  
BIRMINGHAM